

2018 EVENT PROGRAM

SEPTEMBER 15-20



PEAK TO PEAK
RALLYE



Presented by **Porsche Colorado Springs**





PORSCHE

Colorado Springs



Porsche Colorado Springs

We invite you to come visit the only exclusive Porsche Dealership in Colorado!

Our service and passion has been awarded for the 7th time, being identified as one of the top 25 Porsche Dealers in the nation. Experience Porsche Classic Cars and also the newest Porsche products offered one car at a time.

Porsche Colorado Springs

917 Motor City Drive
Colorado Springs, CO 80905
719-219-1911

www.porscheofcoloradosprings.com

2017
Premier
Porsche Dealer

**Porsche Classic
Partner**

TABLE OF CONTENTS

Letter from the Peak to Peak Team	2	Car Photos	14
Letter from the Mayor	3	Rallye Notes - Day 3	15
2017 Rallye Charity Recap	4	Route Instructions - Day 3	16
2018 Rallye Charities	5	Route Map - Day 3	17
Rallye Route / Overall Map	6	Car Photos	18
List of Entrants	7	Rallye Notes - Day 4	19
Rules and Survival Tips	8	Route Instructions - Day 4	20
Survival at Altitude	8	Route Map - Day 4	21
Luggage / Mechanical Breakdowns	9	Car Photos	22
Time and Distance	10	Rallye Notes - Day 5	23
Rallye Notes - Day 1	10	Route Instructions - Day 5	24
Rallye Notes - Day 2	11	Route Map - Day 5	25
Route Instructions - Day 2	12	Past Rallye Route Covers & Maps	26
Route Map - Day 2	13	2019 Rallye	50

IMPORTANT NUMBERS

Technical Support

Don Baird	303-335-7051
Chris Eatherton	303-525-7250

All Other Needs

Larry Winkler	720-219-7078
Toni Winkler	720-219-7080
Greg Mathews	303-589-5933
Cisco Martinez	303-619-2884

*"No matter what sort of car you are driving
or how fast you drive, we all meet behind the
same red light." - Moe Cidaly*

Lodging

Golden Hotel
800 11th Street
Golden, CO
303-279-0100

Wine Country Inn
777 Grande River Dr
Palisade, CO
970-464-5777

St Regis Hotel
315 E Dean St
Aspen, CO
970-920-3300

The cover painting was done by renowned artist Darrell Mayabb

WELCOME TO THE PEAK TO PEAK

Welcome to Peak to Peak Rallye (a.k.a. Wheels to Meals)

We are excited to have you join us for the 2018 edition of the Colorado based Peak to Peak Rallye. This adventure has been built on years of friendship, charity, and a love for driving exceptional cars. Each year we choose a new route to whirl us around some of the most magnificent mountains, fabulous foliage, and stretching straightaways this country has to offer.

We know that many of you have joined us before and we also have some first timers and without all of you we would be just another road trip, but because of all of you we feel confident this week will be an exciting adventure.

Please remember, this is not a high speed, trooper escorted event. Common sense tells us to be particularly vigilant and to obey ALL traffic laws especially around the small communities we will be visiting or driving through. We tend to be a highly visible large group and our hope is to only draw good attention on our journey.

This week we will be traveling to Colorado Wine Country where we will spend two nights and a day trip to Utah before we travel to Aspen for a fun evening at the St. Regis Aspen Resort. We have two small town stops where we will be presenting a donation to local charities before we head back to where we started to wrap up our week of festivities.

Warm Regards,

Your Peak to Peak Team

"Somebody actually complimented me on my driving today. They left a little note on my windscreen. It said 'Parking Fine'." - Tommy Cooper



MAYOR AND CITY COUNCIL
FACSIMILE: 720-898-7515 ▲ TDD: 720-898-7869
PHONE: 720-898-7500

September, 2018

Welcome!

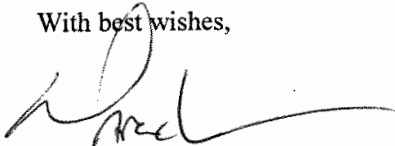
On behalf of the Arvada City Council and the citizens of Arvada, I am thrilled to welcome you to the 2018 Peak to Peak Rallye of the Rockies. Once again, the organizers at Peak to Peak Rallye LLC, and especially my good friends, Harry Mathews and Toni and Larry Winkler, have planned a wonderful trip and adventure for you.

We are thrilled to have this very special non-profit organization as a part of Arvada, and appreciate your assistance in helping Peak to Peak reach its goal of raising funds for community focused non-profit organizations. I am confident that not only are you helping Harry, Toni and Larry and their crew raise money, but you will also enjoy this special experience.

Either before or after the Rallye, I encourage you to spend some free time enjoying this very special community we call home. Arvada has an eclectic Olde Town district with great restaurants, shops, a winery, and several breweries and the light rail line (expected to be completed in late 2018). The Arvada Center for the Arts and Humanities has award winning productions. Our parks and trails system is second to none – if you're a runner or walker, don't miss the 12-mile Ralston Creek Trail. Bring your golf clubs, or rent some, and enjoy a round or two at one of our beautiful golf courses.

We are happy to have you here! Enjoy the scenery and all that our region has to offer. Drive safe!

With best wishes,



Marc Williams
MAYOR OF ARVADA

2017 RALLYE CHARITY RECAP



No, Rev. Ali is not hitting on one of our participants.

Saint George Episcopal Church and Community Meal

"Seeking and Serving Christ in ALL persons"

Saint George Community Meals

On a couple of occasions we have been able to find charitable organizations that we can really get behind and continue to assist after our initial visit. Such is the case with SGCM. Located in Leadville, CO, SGCM provides hot meals 5 days a week. This non-profit organization serves in excess of 11,000 meals annually. Rev Ali Rufkin not only serves lunch on Monday, Tuesday, Thursday and Friday, but also serves dinner on Saturdays. In addition, they are affiliated with the Food Bank of the Rockies and distribute boxes of food once a month to those in need. 2017 was Peak to Peak's second lunch presentation to SGCM, however, we have assisted on multiple occasions once our final expenses are paid and funds are still available. Ali is not shy, as she usually contacts us shortly after the Rallye takes place in hopes that we will once again be able to lend assistance. Doing what she does is not easy. We are pleased that we were once again able to support her efforts in feeding so many in need. This time we were able to present Ali with a **\$20,000** donation. Ali's response was truly special and is one that never gets old.

Arvada Food Bank – Arvada, CO **\$1,000**

A little closer to home, the AFB helps thousands every year by providing the most basic need, food for families living in our own community that struggle to put food on the table.



Motorcycle Relief Project

MRP is a 501c3 tax-exempt non-profit organization, as are all of the organizations that we support, which provides relief to veterans with PTSD and other injuries by taking them on multi-day motorcycle tours. Their mission is to honor and encourage veterans while providing them with opportunities to decompress, get unstuck, and connect with other veterans. Long time friend and all around great guy, Don Adis was on hand to receive our donation during the closing banquet. Don was completely taken aback when he found out that Peak to Peak participants were able to amass and present a total of **\$35,000** to this extremely worthy cause. The emotion displayed was raw and genuine, to say the least. On top of the monetary donation, one of our rallye participants even donated two motorcycles from his personal collection. Wow! To give is divine, indeed.



These two have been friends forever. Don Adis receives \$35,000 donation on behalf of Motorcycle Relief Project.

La Puente Home – Alamosa, CO **\$1,300**

La Puente Home quickly became one of our pet charities after first donating to them when the Rallye route took us through Alamosa a number of years ago. Lance Cheslock does an amazing job running the homeless shelter, food bank and immediate need facilities in the poorest county in Colorado. Our contribution to La Puente through the year's totals in the 10's of thousands.

2018 RALLYE CHARITIES

"Kind Deeds Change Lives"

One area of the rallye that we spend considerable time and mental energy on is the charity component. We strive to make a significant impact on small communities which we pass through that are afforded limited resources. We choose from numerous charitable organizations that meet a simple but specific set of criteria. We assist immediate need facilities, homeless shelters or food banks with little or no overhead. These non-profit organizations are supporting people in dire situations. With little to no overhead, the majority, if not all of our donations are used to directly help those in need. Thanks to the generosity of our Peak to Peak family, there have been numerous occasions when we have had flabbergasted recipients exclaim "This is the single largest donation we have ever received". Kind makes everything worth while, eh?

At the time this program was sent to print, we had made a firm determination on one of what will be two on-route presentations. Stay tuned for stop number two.



The Abraham Connection Homeless Shelter

The Abraham Connection has become one of our pet organizations. 2018 will make our third visit to this well deserving organization. Their Mission Statement: To offer emergency food and shelter to those in need in Delta County by offering a hand up, not a hand out.

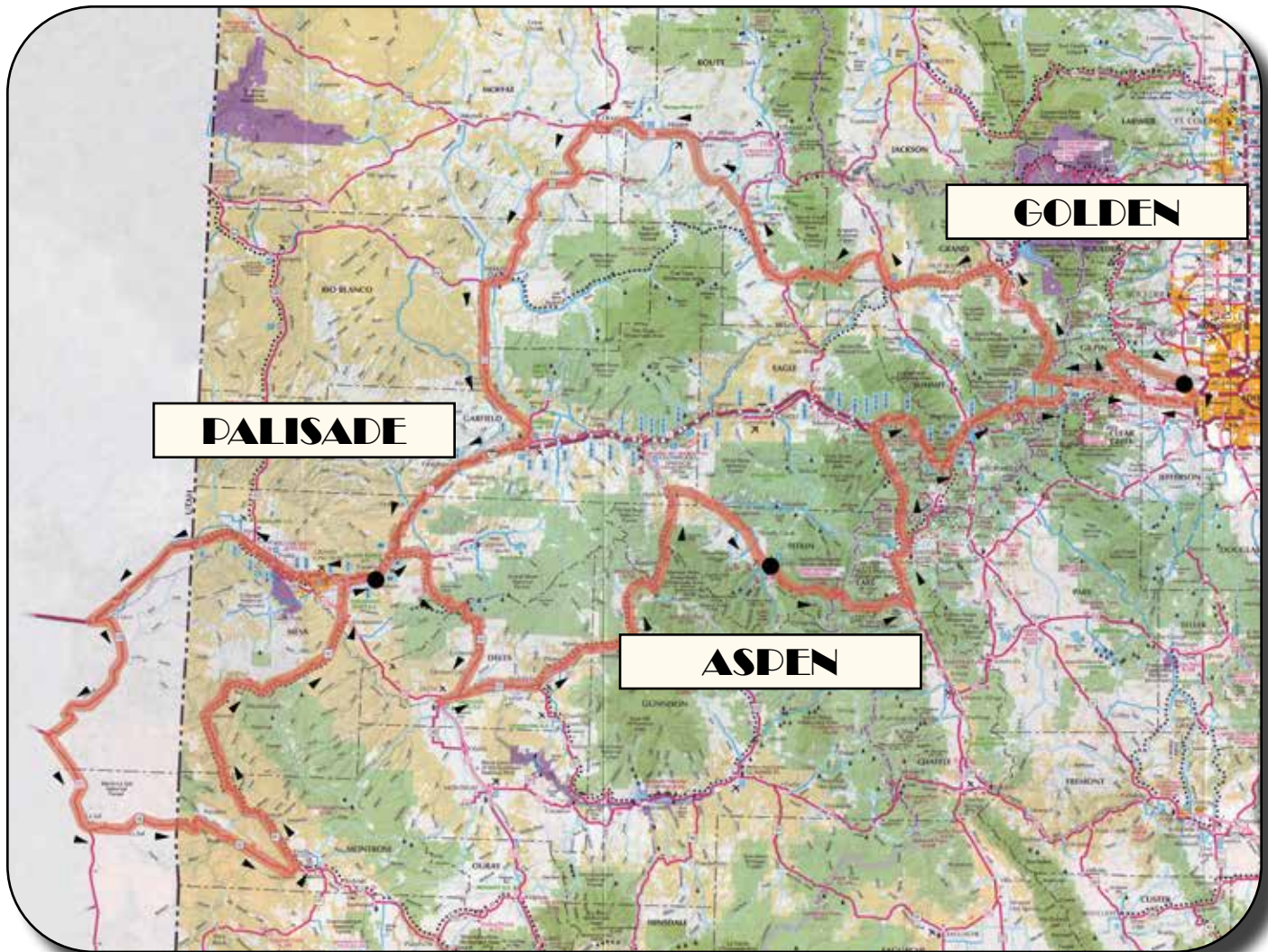


When we made our initial visit to Abraham Connection in 2011 we were able to donate \$10,000. The donation was used as seed money to build their own facility and after five years of housing homeless in a church basement, they did just that and in December of 2015 the new facility opened. When Peak to Peak returned to ACHS in 2016 we were able leave behind in excess of \$20,000 and not many dry eyes. ACHS representative Cheryl Oeltjenbruns' depiction of the individual and family struggles they address every day was both heartbreaking and heartwarming at the same time. We commend the efforts of all involved with ACHS and are proud and grateful to help them do the work they do.

Rocky Mountain splendor



2018 RALLYE ROUTE



No doubt this is the dastardly doings of Mr. Veitch



Someone has to stick up for the Corvettes

LIST OF ENTRANTS

1	Alpio Barbara & Mary Gardiner Scottsdale, AZ 2015 <i>Corvette C7</i>		14	Rick Kaufman San Francisco, CA 1972 <i>Ferrari GTC/4</i>	
2	David & Myrna Bennett Colorado Springs, CO 2018 <i>Porsche Turbo S</i>		15	Bob Law & Joan Dohrman Reno, NV 2004 <i>Z06 Corvette</i>	
3	Duncan & Michael Burdick Colorado Springs, CO 1969 <i>Jaguar E-Type</i>		16	Stu & Sheryl Lehr Scottsdale, AZ <i>Porsche 981 Spyder</i>	
4	Mark & Luke Burgard Golden, CO 2017 <i>Porsche Turbo S</i>		17	Bill & Kathy Magaziner Castle Pines, CO 2005 <i>Porsche 911 Turbo S Cab</i>	
5	Mark Clark & Lauren Weinstein Paradise Valley, AZ 2012 <i>Porsche 997.2 Turbo S</i>		18	Greg & Chelsea Mathews Arvada, CO 2018 <i>Corvette ZR1</i>	
6	Doug & Ruth Freyta Golden, CO 2010 <i>Ferrari 458 Italia</i>		19	Harry & Cris Mathews Golden, CO 2017 <i>Ferrari 488 GTB</i>	
7	Doug & Marla Gordon Golden, CO 2013 <i>Porsche Cayman R</i>		20	Kayla Mathews & Logan Wiltse Denver, CO 1996 <i>Corvette GS</i>	
8	Mike & Jane Green Houston, TX 2018 <i>Ferrari 812 Superfast</i>		21	Richard & Diane Mazer Scottsdale, AZ 2016 <i>Porsche Turbo S</i>	
9	Tim Haas Manitou Springs, CO 1973 <i>Detomaso Pantera</i>		22	David & Eva Schoonmaker Morrison, CO 2018 <i>Porsche Turbo S</i>	
10	Don & Laurie Hicks Denver, CO 2016 <i>Porsche Cayman GTS</i>		23	Kyle & Bev Turner Evergreen, CO 2004 <i>Mercedes SL55 AMG</i>	
11	Tim & Lorie Hoiles Colorado Springs, CO 2018 <i>Jaguar F Type Conv</i>		24	Fred & Linda Veitch Colorado Springs, CO 2016 <i>Porsche GT3RS</i>	
12	Peter & Debbie Hosmer Rye, NH 2013 <i>Porsche Cayman R</i>		25	Eduardo Venegas & Karen Weinberg Scottsdale, AZ 2017 <i>Porsche Carrera S</i>	
13	David & Sue Jenkins Manitou Springs, CO 2018 <i>Porsche GT2RS</i>		26	Larry & Toni Winkler Arvada, CO 2018 <i>Ferrari 488</i>	

RULES AND SURVIVAL TIPS

The Peak to Peak is not a high speed rallye. Please observe all speed limits and road signs. Especially in built up areas and small towns. There is no police escort for protection against the "County Mounties". Please be courteous to local drivers, we don't want to wear out our welcome. These days most drivers carry cell phones and they won't hesitate to use them to call the cops.

Use your best judgement and caution on the mountain passes and roads. Conditions can change around the next curve. Either wet roads or wildlife crossing the road or another hairpin curve. There are many decreasing radius turns on the passes, sometimes one after the other. Expect the unexpected.



Jimmy & Bruce hamming it up before hitting the road



Don & Laurie receive the Spirit of the Peak award

Colorado wildlife is more than celebrity parties in Aspen. Watch out for deer and large elk crossing the road. Also, sheep, goats, antelope and other four-legged things. These animals seem to be incapable of properly judging "closing speeds". Give them plenty of room. The sign "Open Range" beside the road means that cattle are free to wander wherever they feel like. Which usually means the middle of the highway. The rallye coincides with hunting season, so beware of two-legged animals in orange vests, drinking beer and carrying a rifle. You don't want to anger this species. All cars must be road legal and drivers must carry basic liability insurance as required in Colorado.

SURVIVAL AT ALTITUDE



2016 Porsche GT3RS driven by Fred & Linda Veitch

If you are not used to high altitude it's a good idea to take it easy the first couple days and drink plenty of water. You can quickly become dehydrated in the dry air of the mountains. Carry bottled water in your car. Eight glasses a day sounds like a lot, but you need it. Don't forget sunglasses, a hat and your sunscreen. The sun can be very intense at altitude. That is if it doesn't snow...So, bring warm clothes and driving gloves. You just might need them as well.

LUGGAGE AND MECHANICAL BREAKDOWN

A transporter will be available with some tools and equipment to deal with mechanical problems or to haul a car to the next hotel at the end of the day's driving or to the nearest repair shop. **Although, there will be certain portions of the route that the transporter will not be able to follow due to vehicle length restrictions.**

We will also have a second support vehicle available that will be used to carry any luggage you aren't able to carry in your sports car.

"Driving is a spectacular form of amnesia. Everything is to be discovered, everything is to be obliterated." - Jean Bandrillard



Marla's got the spirit!



Are you looking for a unique place to host your graduation party or event?
Look no further!

- 15,000 sq. ft.
- Up to 400 capacity
- Free onsite parking
- Stage, microphone, podium, projector, screens
- 2 Bars – liquor license and you pick your caterer



5889 Lamar Street
Arvada, CO 80003

tammy@lamarstreetcenter.com

Call 303-424-0208 to book now!

TIME AND DISTANCE

Your actual travel time depends on weather, traffic, construction zones and stops for photo ops. We have allowed plenty of time to admire the scenery.

Day	Route	Distance	Time
Monday, September 17	Golden to Craig	195 miles	3.75 hours
	Craig to Palisade	137 miles	2.25 hours
		332 miles	6 hours
Tuesday, September 18	Palisade to Naturita	192 miles	3.5 hours
	Naturita to Palisade	109 miles	2 hours
		301 miles	5.5 hours
Wednesday, September 19	Palisade to Redstone	144 miles	3 hours
	Redstone to Aspen	45 miles	1 hour
		189 miles	4 hours
Thursday, September 20	Aspen to Black Hawk	173 miles	3.75 hours
	Black Hawk to Golden	25 miles	.5 hours
		198 miles	4.25 hours

RALLYE NOTES

Day 1 - Sunday, September 16

Arrive in Arvada

Welcome Reception & Registration 11:00 am-3:00 pm
The Mathews Collection
4700 W 60th Ave, Arvada, CO

Check in at Golden Hotel 3:00 pm
800 11th St, Golden, CO

Cocktails / Dinner 6:30 pm
Table Mountain Cantina
1310 Washington Ave, Golden, CO

"I had to stop driving my car for a while....the tires got dizzy." - Steven Wright



Not that we are snobs or anything

HEADING

Day 2 - Monday, September 17

First Day of Driving

Golden to Palisade

Now that we have had a chance to rekindle old friendships, or begin new ones, today marks the first of this four day adventure on the road. “Go West, young man, go West and grow up with the country”. A phrase often attributed to American author, Horace Greeley concerning America’s expansion westward, it was first stated by John Babsone Lane Soule in an 1865 editorial in the Terre Haute Express. Well, the man said to Go West. So west we shall go.



What speed limit?

Using I-70 as our escape route out of the big city, it isn’t long before we find ourselves climbing into the Rocky Mountain Front Range. As we make our way up Genesee Mountain you will see the famed Sculptured House (aka Sleeper House) on the left. Our Peak to Peak hosts, Larry and Toni Winkler are the current owners of this property, probably best known for its prominence in the Woody Allen film, Sleeper. As we crest Genesee Mountain we will bear witness to one of the most epic views of the Rocky Mountains any where.

After exiting I-70 onto US-40, we make the climb up Berthoud Pass. At the 11,307’ summit is where we encounter the first of four crossings of the Great Continental Divide this week. Awaiting us at the bottom of the pass is the town, and ski area, of Winter Park where you may choose to quench your need for caffeine. Continuing west on US-40 we’ll pass through Fraser, Granby, and on to Kremmling. Fuel, snacks, and rest rooms can be found at the Kum & Go in Kremmling.

After Kremmling, it is roughly six miles until we connect with CO-134. Those of you that have traveled this route know it to be one of the most

enjoyable driving roads around. For those of you that have not, well, you are in for a real treat. After passing through the Gore Range it is not long until we find ourselves on yet another of the most phenomenal roads we have available to us, 20 Mile Road. Once reaching US-40 once again it is roughly 20 miles to our lunch stop in Craig. Take caution through this stretch as it is regularly patrolled. Today’s lunch stop is where our first of two on-route charitable donation presentations will take place.

Upon leaving Craig, once again you’ll want to monitor your speed because it is more than likely that someone else will be. CO-34 offers up some wide open spaces until we reach Meeker. And once again, watch your speed while passing through this area. After Meeker, more wide open roads will escort us back to I-70. It is here that I-70 runs alongside the Colorado River, the same water source that carved out one of the natural wonders of the world, Grand Canyon. This stretch of Interstate will escort us to today’s final destination at Palisade’s Wine Country Inn. WCI will serve as home for the next two nights.

ROUTE INSTRUCTIONS

Day 2 - Monday, September 17

Golden to Palisade

Your mileage may differ slightly. Please be prepared to follow directions prior to mileage listed here.

- Have luggage in Golden Hotel lobby by 8:30 am
- Turn left on 11th St leaving Golden Hotel garage / parking lot
- (.1 m) Turn right onto Washington Ave
- (.6 m) Turn right onto 19th St
- (.3 m) At traffic circle, continue straight to stay on 19th St
- (.2 m) Take the ramp on the left onto 6th Ave
- (.2 m) Merge onto 6th Ave
- (1.7 m) Use the right lane to turn slightly right towards CO-470 E / Colorado Springs / I-70 W
- (.4 m) Continue onto CO-470 E
- (.2 m) Take the exit onto I-70 W toward Grand Junction
- (27.7 m) Take exit 232 toward US 40 / Empire / Granby
- (.3 m) Continue onto US-40 W
- (79.6 m) Turn left onto CO-134 W
- (26.9 m) Take slight right onto CO-131 N
- (19 m) Turn left onto Co Rd 27 just past Oak Creek
- (20.2 m) At the traffic circle, take the 2nd exit and stay on Co Rd 27
- (3 m) Turn left onto US-40 W
- (22.3 m) Turn left onto Ranney St
- **Recommended Fuel Stop in Craig**
- (.1 m) Arrive at Fiesta Jalisco for lunch, 410 Ranney St, on the right
- After lunch stop, turn right onto Ranney St
- (.4 m) Turn right onto 1st St
- (1.4 m) Turn left onto CO-13 S
- (24.1 m) Continue straight to stay on CO-13 S

Please wear your name tag!

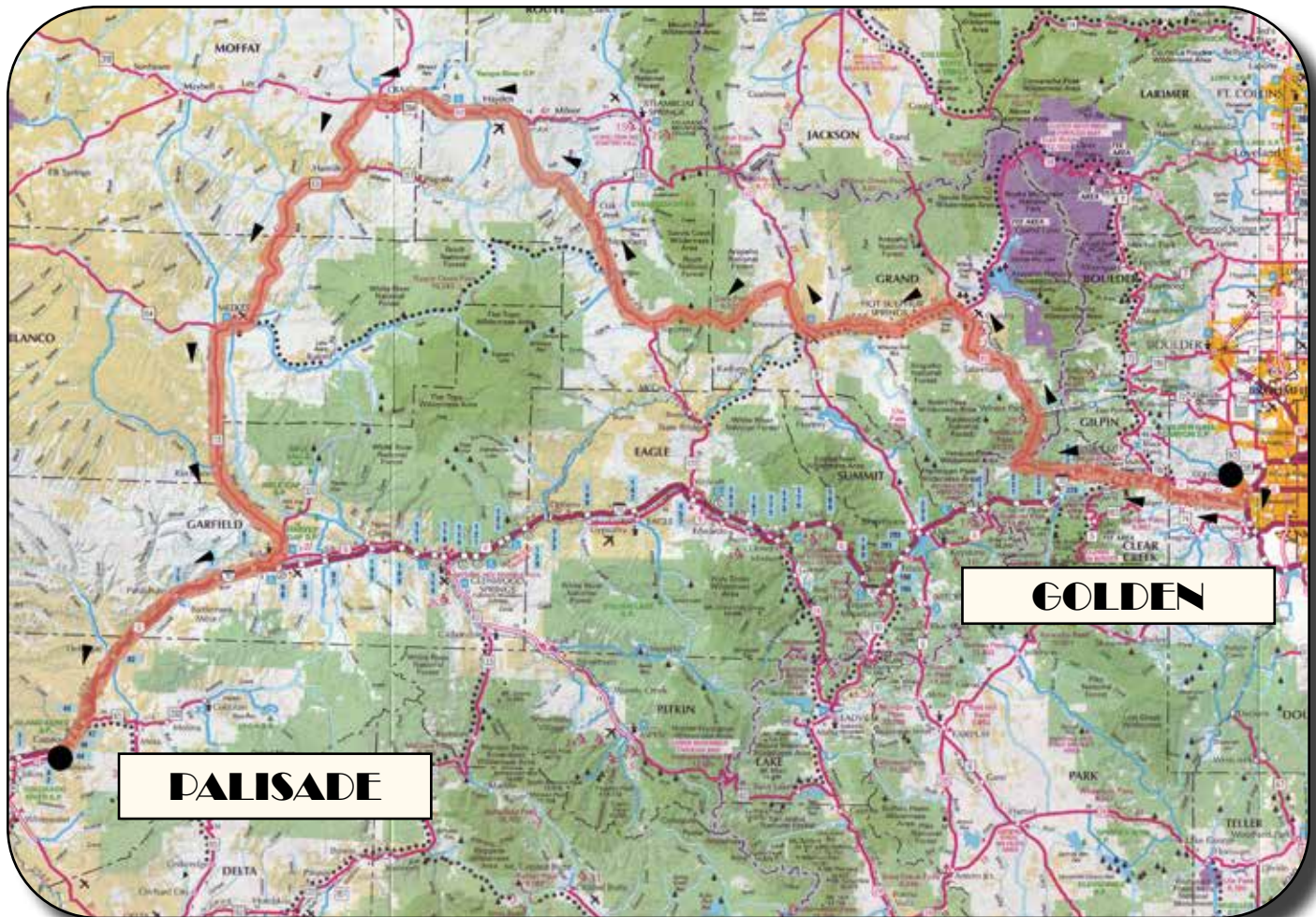
Breakfast	6:30-8:30 am
Golden Hotel / Golden Vista Room	
Participant's Meeting	8:40 am
Golden Hotel Parking Garage	
Departure Time	9:00 am
Morning Drive	3.75 hours
	195 miles
Lunch	12:30 pm
Fiesta Jalisco (Craig, CO)	
Afternoon Drive	2.25 hours
	137 miles
Shuttle leaves WCI	6:15 pm
Reception / Dinner	6:30 pm
Palisade Brewing Co (Palisade, CO)	
Lodging	
Wine Country Inn (Palisade, CO)	

- (62.5 m) Continue onto Railroad Ave
- (.1 m) Continue onto CO-13/W 20th St
- (1.9 m) Turn right onto US-6 W
- (2.6 m) Take the ramp onto I-70 W
- (45.3 m) Take Exit 42 toward Palisade
- (.2 m) Turn left onto 37 3/10 Rd / Elberta Ave
- (.1 m) Turn right onto 35 8/10 Rd / Stubb Ditch Rd
- (.3 m) Arrive at Wine Country Inn, today's destination

"The total ugliness and indifference of the worst features of the human race come out in their driving habits." - Charles Bukowski

ROUTE MAP

Day 2 - Monday, September 17



"I have always loved blizzards, if only because of the driving experience, which is definitely an acquired taste." - Hunter S Thompson



2012 Porsche 997.2 Turbo S driven by Mark Clark & Lauren Weinstein



2018 Jaguar F-Type S Convertible driven by Tim & Lorie Hoiles

CAR PHOTOS



2018 Porsche Turbo S driven by David & Myrna Bennett



1969 Jaguar E-Type driven by Duncan & Michael Burdick



2005 Ferrari 360 Spyder driven by Peter & Debbie Hosmer



2018 Ferrari 812 Superfast driven by Mike & Jane Green



2016 Porsche 981 Spyder driven by Stu & Sheryl Lehr



2018 Porsche GT2RS driven by David & Sue Jenkins



2005 Porsche 911 Turbo S Cab driven by Bill & Kathy Magaziner



2015 Corvette C7 driven by Alpio Barbara & Mary Gardiner

RALLYE NOTES

Day 3 - Tuesday, September 18

Second Day of Driving

Palisade Loop (or chill day in Palisade)

With a two-night stay at Wine Country Inn, this day provides you with the option of staying in Palisade to enjoy what the area has to offer, or to make the roughly 300 mile driving loop. The loop begins by once again, going west. I-70 will transport us into eastern Utah where we will soon venture off of the beaten path onto UT-128. This route will eventually lead us into scenic Castle Valley and alongside the mighty Colorado River once again. Before reaching Castle Valley UT-128 offers up a section of entertaining road with numerous rises and falls, almost giving the sense of being on a roller coaster. Roller coasters are not my thing by any stretch of the imagination, but this road is a hoot!

The journey on UT-128 ends at US-191 just north of Moab. Moab is wildly popular with hikers, bikers, rock climbers and Jeepers. Tourism is big as well with it's proximity to both Arches and Canyonlands National Parks. Moab is a good mid-morning stopping point for coffee. If you just happen to have an ice cream craving, Harry can point you in the right direction. Fuel might not be a bad idea here as it is scarce the remainder of today's trip. Continuing south on US-191 we parallel the Manti-La Sal National Forest and La Sal Mountain Range to the east. A stark contrast from Castle Valley, the La Sal Range reaches an elevation of 12,721' at Mount Peale. Our route skirts the south end of this range as we head back towards Colorado on UT-46. Once we hit Colorado the road becomes CO-90. Shortly, the road becomes a bit treacherous. Rough surfaces and switchbacks with extreme drop-offs, which can come up on you quickly, require a high level of caution in order to avoid unwelcome consequences. Upon navigation of this area we enter the Paradox Valley. The "town" of Bedrock marks the gateway to this valley. Don't worry if you happen to blink and miss seeing Bedrock as this is not the same one that the Flintstones and Rubbles call home.



All business!

The stretch of CO-90 that passes through Paradox Valley is one that drivers could easily get caught up in as it is a straight shot that seemingly goes on forever. But use your better judgment, which we obviously always recommend, because the road surface is rough and penalties for extreme speeding can be severe. This straight shot of pavement transports us to our lunch stop in the town of Naturita.

Departure from Naturita leads us north on CO-141 and through the Dolores Canyon, one of Colorado's most scenic sandstone canyons. A stop at the Hanging Flume Overlook is highly recommended. Built along the canyon wall to bring water up to a gold mine, the 7 mile long trough was constructed by miners in the late 1800's. The flume moved eighty million gallons of water into the mine when operational. Next up is Gateway, home to Gateway Canyons Resort and Auto Museum, the brainchild of Discovery Channel founder John Hendricks. GCR is now considered as one of the top destination resorts in the U.S. The stretch of black-top between Gateway and Whitewater passes through the Unaweep Canyon, a 2500-ft deep, mile wide, and 40 mile long valley. Much fun will be had here. From Whitewater it is a short trip back to home base at Wine Country Inn for the night.

ROUTE INSTRUCTIONS

Day 3 - Tuesday, September 18

Palisade Loop

Your mileage may differ slightly. Please be prepared to follow directions prior to mileage listed here.

- Return to 37 3/10 Rd / Elberta Ave, turn left
- (.3 m) Merge onto I-70 W towards Utah
- (68.2 m) Take Exit 204 for UT-128 toward Moab
- (.3 m) Turn left onto UT-128
- (3 m) Turn right to stay on UT-128
- (41.5 m) Turn left onto US-191 S
- No fuel for 80 miles once leaving Moab
- (24.8 m) Turn left onto UT-46 E
- (21.6 m) UT-46 becomes CO-90
- (33.8 m) Turn right onto CO-141 S
- (2.4 m) Turn right, arrive at Rimrock Hotel (123 E Main St, Naturita) for lunch
- **FUEL?**
- After lunch, return to Main St / CO-141, turn left
- (93.9 m) Turn left onto US-50 W
- (2.6 m) Turn right onto CO-141 N / 32 Rd
- (5.4 m) Turn right onto I-70BL E
- (1.1 m) Keep right at the fork, follow signs for I-70 E and merge onto I-70 E
- (4.8 m) Take exit 42 toward Palisade
- (.3 m) Turn right onto 37 3/10 Rd / Elberta Ave
- (<.1 m) Turn right onto 35 8/10 Rd/Stubb Ditch Rd
- (.3 m) Arrive at Wine Country Inn for the evening

*"You steer down lightless highways and you invent a destination because movement is key."
- Nic Pizzolatto*

Please wear your name tag!

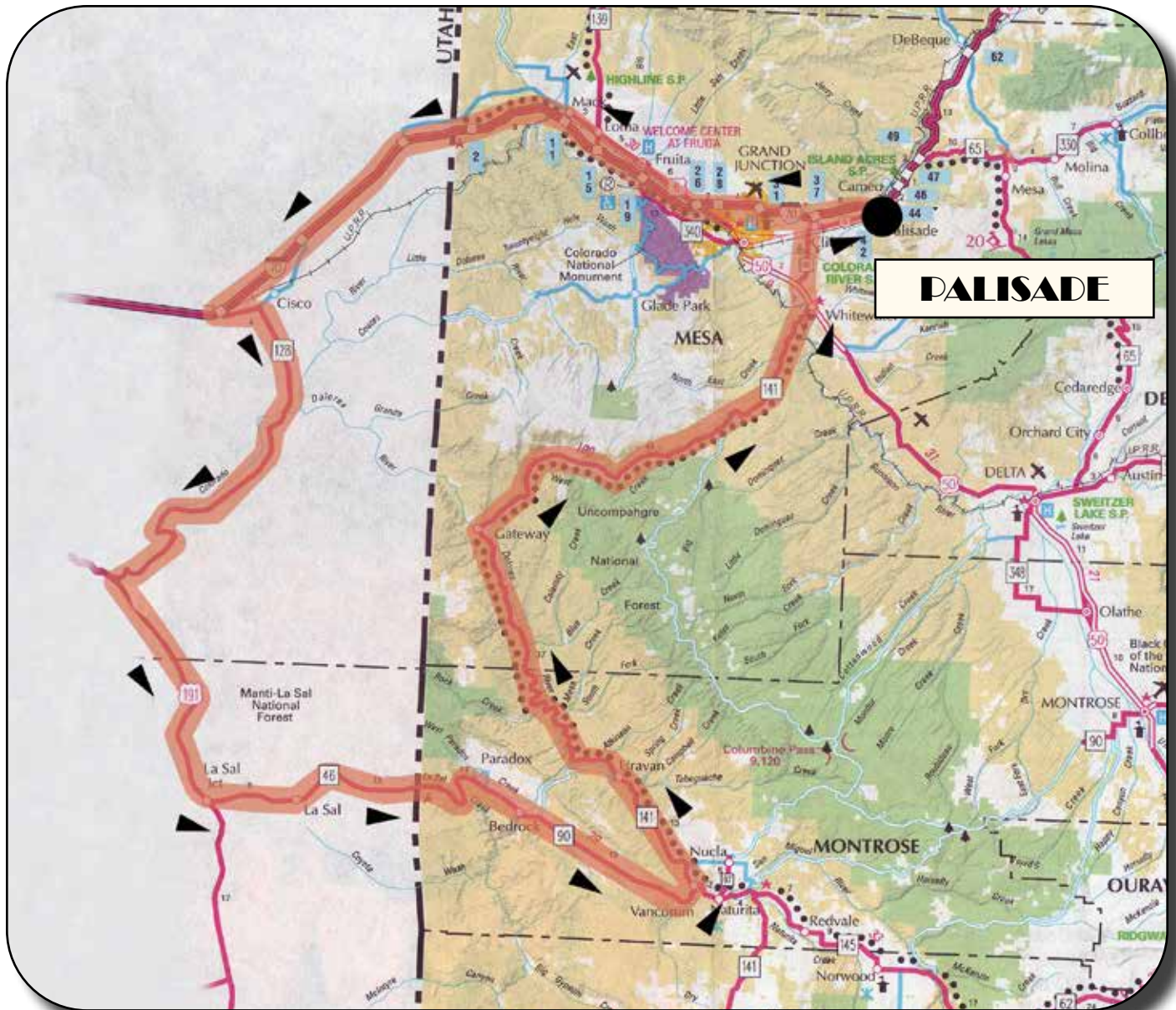
Breakfast	6:30-8:00 am
Wine Country Inn	
Participant's Meeting	8:40 am
WCI Parking Lot	
Departure	9:00 am
Morning Drive	3.5 hours
	192 miles
Lunch	12:30 pm
Rimrock Hotel / Uncle Reed's Good Grub (Naturita, CO)	
Afternoon Drive	2 hours
	109 miles
Reception / Dinner	6:30 pm
Wine Country Inn (Palisade, CO)	
Lodging	
Wine Country Inn (Palisade, CO)	



How did they slip by the eligibility committee?

ROUTE MAP

Day 3 - Tuesday, September 18



Happy Hour at 3 Peaks Grill, Steamboat Springs



A trio of distinguished gentlemen

CAR PHOTOS



2018 Ferrari 488 driven by Larry & Toni Winkler



1973 Detomaso Pantera driven by Tim Haas



2004 Mercedes SL55 AMG driven by Kyle & Bev Turner



2016 Porsche Cayman GTS driven by Don & Laurie Hicks



2017 Ferrari 488 GTB driven by Harry & Cris Mathews



2010 Ferrari 458 Italia driven by Doug & Ruth Freyta



1972 Ferrari GTC/4 driven by Rick Kaufman



2004 Corvette Z06 driven by Bob Law & Joan Dohrmann

Day 4 - Wednesday, September 19

Third Day of Driving

Palisade to Aspen

Our final departure from Palisade and Wine Country Inn leads us east on I-70. We experience one final brief stretch along side the Colorado River until we exit I-70 and begin our journey upwards towards the Grand Mesa. At about 500 square miles it is the largest flat-topped mountain on Earth. This is a highlight any time of year but especially during this time of year. If the conditions are right, the fall colors can be incredibly spectacular. Chances are, even if the colors are not at their peak the drive alone will provide one of the real highlights of the week.

The descent from Grand Mesa takes us through the town of Cedaredge. (Cedaredge public library was the grateful recipient of Peak to Peak charitable donations during the rallye of 2006). This leads us to the second charity presentation of our current outing. We've scheduled a coffee stop in Delta where we present much needed monetary and moral support to a most deserving organization.

Upon leaving Delta we head back east on CO-92 through Hotchkiss, Paonia, and Somerset. Be sure to come to what feels like a complete stop in Somerset, a small coal mining community, where the speed limit drops to 15 miles per hour. From here it's onward towards Paonia reservoir. At this time of year the reservoir tends to look not as much like a large body of water as it does a mud bog; more suitable for redneck four-wheeling events, or bikini wrestling depending on your preference. Regardless, this route leads us toward a real driving highlight. Up to the summit of McClure Pass we now venture. With wide sweepers, tossed in with tighter and more technical turns, this one is highly entertaining. Beyond the summit, an extreme sight-seeing opportunity envelops us during the descent of McClure, especially during the height of the fall colors. At the base of McClure we find the turn off that would take you to the world famous hamlet of Marble, CO. Marble is home to the Yule Marble Quarry who's



The Clark's Lambo looks just plain nasty

marble is considered to be of exceptional quality and has been used for the Tomb of the Unknowns, as well as for parts of the Lincoln Memorial in Washington D.C. among other notable structures. Also located in the town of Marble is Slow Groovin' BBQ. With some of the best BBQ to be had, it's definitely worth putting on your "to-do" list. The Atomic Buffalo Turds (bacon-wrapped, stuffed jalapenos) are highly recommended. Marble won't be included in our route but it's a destination you should include in your travels if ever given the opportunity. Just a short trek north on CO-133 lays today's lunch stop at the Redstone Inn. This location has become somewhat of a regular for Peak to Peak due to its beautiful setting and so that Rick K may fill his Fly Fishing jones. The food ain't half bad either.

Continuing north on CO-133 from Redstone, a scenic and twisty road transports us to Carbondale. Along the way, Mt Sopris takes center stage to our right. At 12,965 feet in elevation this is the highest stand-alone peak in Colorado. It is claimed to hold mystical properties by local residents. Whether or not that holds true, it is certainly one of the most photographed peaks in the state. The town of Carbondale is where we connect with CO-82, which will take us through Basalt and Snowmass before reaching tonight's ultimate destination, The St. Regis Aspen. Today's schedule allows for the opportunity to check out the downtown area, shop, or who knows, maybe even rub elbows with a celebrity or two at one of the local watering holes.

ROUTE INSTRUCTIONS

Day 4 - Wednesday, September 19

Palisade to Aspen

Your mileage may differ slightly. Please be prepared to follow directions prior to mileage listed here.

- Have luggage at trailer by 8:30 am
- Return to 37 3/10 Rd / Elberta Ave, turn left
- Immediate right to merge onto I-70 E
- (.3 m) Merge onto I-70 E
- (7 m) Take Exit 49 for CO-65 S toward Grand Mesa
- (.2 m) Merge onto CO-65
- (61 m) Turn right onto CO-92 W
- (3.8 m) Turn left onto Main St
- (.4 m) Turn right onto W 5th St
- (.3 m) Turn right onto Silver St
- (<.1 m) Arrive at The Abraham Connection / coffee break
- Upon leaving Abraham Connection, return southward towards 5th St
- (<.1 m) Turn left onto 5th St
- (.3 m) Turn left onto Main St
- (.3 m) Turn right onto CO-92 E
- (20.7 m) Veer left onto CO-133 N
- (49.5 m) Turn right onto Redstone Blvd
- (<.1 m) Arrive at Redstone Inn for lunch
- After leaving Redstone, return to CO-133 N, turn right
- (15.6 m) Turn right onto Snowmass Dr
- (.6 m) Turn right onto Co Rd 100
- (3.4 m) Turn right onto CO-82 E
- (24.3 m) At traffic circle, take 3rd exit to stay on CO-82 E
- (.7 m) Turn left onto W Main St

Please wear your name tag!

Breakfast	6:30-8:30 am
Wine Country Inn	
Participant's Meeting	8:40 am
WCI Parking Lot	
Departure	9:00 am
Morning Drive	3 hours
	144 miles
Lunch	12:00 pm
Redstone Inn (Redstone, CO)	
Afternoon Drive	1 hours
	46 miles
Reception / Dinner	6:30 pm
St Regis Aspen (Aspen, CO)	
Lodging	
St Regis Aspen (Aspen, CO)	

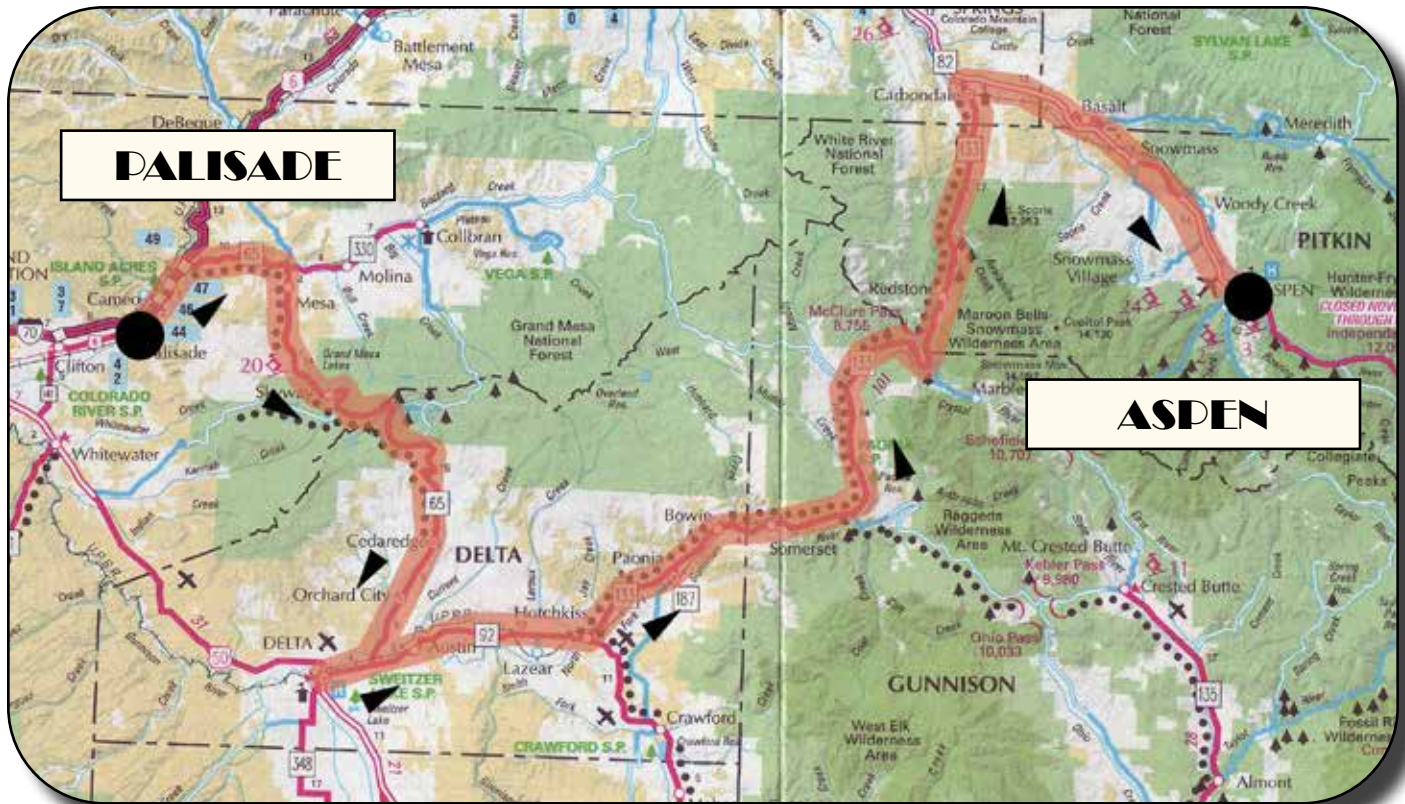
- (.5 m) Turn right onto S Aspen St
- (.3 m) Turn left onto E Dean Ct
- (<.1 m) Arrive at St Regis Aspen for the evening



Stairway to heaven?

ROUTE MAP

Day 4 - Wednesday, September 19



'tis a privilege to live in Colorado

CAR PHOTOS



2016 Porsche Turbo S driven by Richard & Diane Mazer



2013 Porsche Cayman R driven by Doug & Marla Gordon



2017 Porsche 991 Carrera S driven by
Eduardo Venegas & Karen Weinberg



2017 Porsche Turbo S driven by Mark & Luke Burgard



2018 Porsche Turbo S driven by David & Eva Schoonmaker



1996 Corvette GS driven by Kayla Mathews & Logan Wiltse



2018 Corvette ZR1 driven by Greg & Chelsea Mathews

*"Need I remind you, 007, that you have a
license to kill, not to break traffic laws."
- Taken from the James Bond film, Golden Eye*

Day 5 - Thursday, September 20

Fourth Day of Driving

Aspen to Golden

Today brings about our final day on the road. As we leave the glitz and glamour of Aspen behind us, we begin our attack on the most daunting stretch of road of the week. It's time for the ascent of Independence Pass. A note of caution here is that during the climb there are a couple short stretches of Hwy 92 that are only wide enough for approximately 1 ½ vehicles to pass. You do the math. Adjust accordingly. At an elevation of 12,095 feet at the summit, Independence Pass is the highest paved crossing of the Continental Divide in the U.S. It has become a Peak to Peak tradition for our group to congregate at the summit for a photo op in front of the Independence Pass sign. We will be making the crossing fairly early in the morning so don't forget the elevation and have your jacket at the ready. While stopped at the summit, take advantage of the scenic overlook which provides viewing of the alpine tundra environment above tree line, and offers excellent views to the east of Mount Elbert, Colorado's highest point. Interestingly enough, the first recorded sighting of Independence Pass, in 1806, was by Zebulon Pike. Does that name sound familiar?

Following our break among the clouds (and where the air is mighty thin), awaiting us is a spectacular drive down the east side of Independence Pass. This road is narrow and winding. No place to be in a rush but with the views we are being afforded there is absolutely no reason to be. Towards the end of this amazing road lays Twin Lakes. Here we have the good fortune to experience some of the most incredible scenery that Colorado has to offer. And that's saying something. CO-92 culminates with the intersection of US-24 where we head north towards the town of Leadville. Along the way, US-24 offers full-on viewing of both Mount Elbert (14,433') and Mount Massive (14,421'), the two

highest points in Colorado. At 10,152', Leadville is the highest incorporated city in the U.S. It is also the site of Lake County Airport; North America's highest at 9,927'.

Upon departing Leadville, we continue on US-24 with another great section of driving and scenery. Tennessee Pass is just ahead. This area holds the site of Camp Hale, formerly a WWII training ground for U.S. Army troops of the 10th Mountain Division. A memorial to troops of the division is located at the summit of the pass. Our passage along US-24 comes to an end as we connect back with the real world that awaits us at Interstate 70 just west of Vail. The Vail Valley can offer up some of the most extreme seasonal colors in the state when conditions are right. Be sure to watch your speed in this area as it is as heavily monitored as any we'll encounter this week. FYI, there is a rest area at the summit of Vail Pass for those in need. From there we pass through Copper Mountain, Frisco, Silverthorne/Dillon, and then make our way towards our final crossing of the Continental Divide. At 11,158' above sea-level, the Eisenhower/Johnson tunnels are among the highest vehicular tunnels in the world. They also hold the distinction as the highest mountain tunnel and highest point on the Interstate Highway System. After exiting the tunnel, it's all down hill; literally. And then, one final stop in the gambling town of Blackhawk for lunch, where a buffet befitting a King awaits. After lunch, one final short and scenic journey brings us to the end of the on-road portion of the 2018 Peak to Peak Rallye. With all back to reality, safe and sound, it's one final gathering before we bid each other "Adieu" until next year. The Closing Banquet and Comedic Roast, to be held at the fabulous Lamar Street Center, bring the festivities to an end. We trust you will take with you many fond memories.

ROUTE INSTRUCTIONS

Day 5 - Thursday, September 20

Aspen to Golden

Your mileage may differ slightly. Please be prepared to follow directions prior to mileage listed here.

- Have luggage at front desk by 8:30 am
- Leave parking garage turn right onto E Dean St
- (<.1 m) Turn left onto Mill St
- (<.1 m) Turn right onto E Durant Ave
- (.3 m) Turn left onto S Original St
- (<.1 m) Turn right onto E Cooper Ave
- (.5 m) Cooper Ave becomes CO-82, continue straight.
- Group photo at top of Independence Pass
- (42.4 m) Turn left onto US-24
- (15.2 m) Turn right onto E 9th to stay on US-24
- (.1 m) turn left onto Poplar St to stay on US-24
- (1.6 m) Turn left to stay on US-24
- (29.3 m) Turn left to merge onto I-70 E
- (.2 m) Merge onto I-70 E
- Watch speed through Vail Valley
- (73.1 m) Use left lane to take exit toward Blackhawk / Central City
- (.2 m) Continue onto US-6 E
- (2.8 m) Sharp left onto CO-119
- (6.4 m) Turn left onto Main St
- Arrive at Isle Casino for lunch / Park in Parking Garage
- Upon leaving Isle Casino, head west on Main St
- (<.1 m) Turn right onto Mill St
- (<.1 m) Turn left onto CO-119
- (5.8 m) Turn right onto CO-46 E / Golden Gate Canyon Rd
- (17.7 m) Turn right onto CO-93 S
- (.4 m) Turn left onto Washington Ave
- (1.1 m) Turn right onto 11th St

Please wear your name tag!

Breakfast	6:30-8:30 am
St Regis Aspen (Restaurant)	
Participant's Meeting	8:40 am
St Regis Parking Garage	
Departure	9:00 am
Morning Drive	3.5 hours
	172 miles
Lunch	12:30 pm
Isle Casino / Farmers Pick Buffet (Blackhawk, CO)	
Afternoon Drive	.5 hours
	25 miles
Shuttle leaves Golden Hotel	6:00 pm
Reception / Dinner	6:30 pm
Lamar Street Center / Steel Affairs 5889 Lamar St, Arvada, CO	

End of the road, right back where we started.

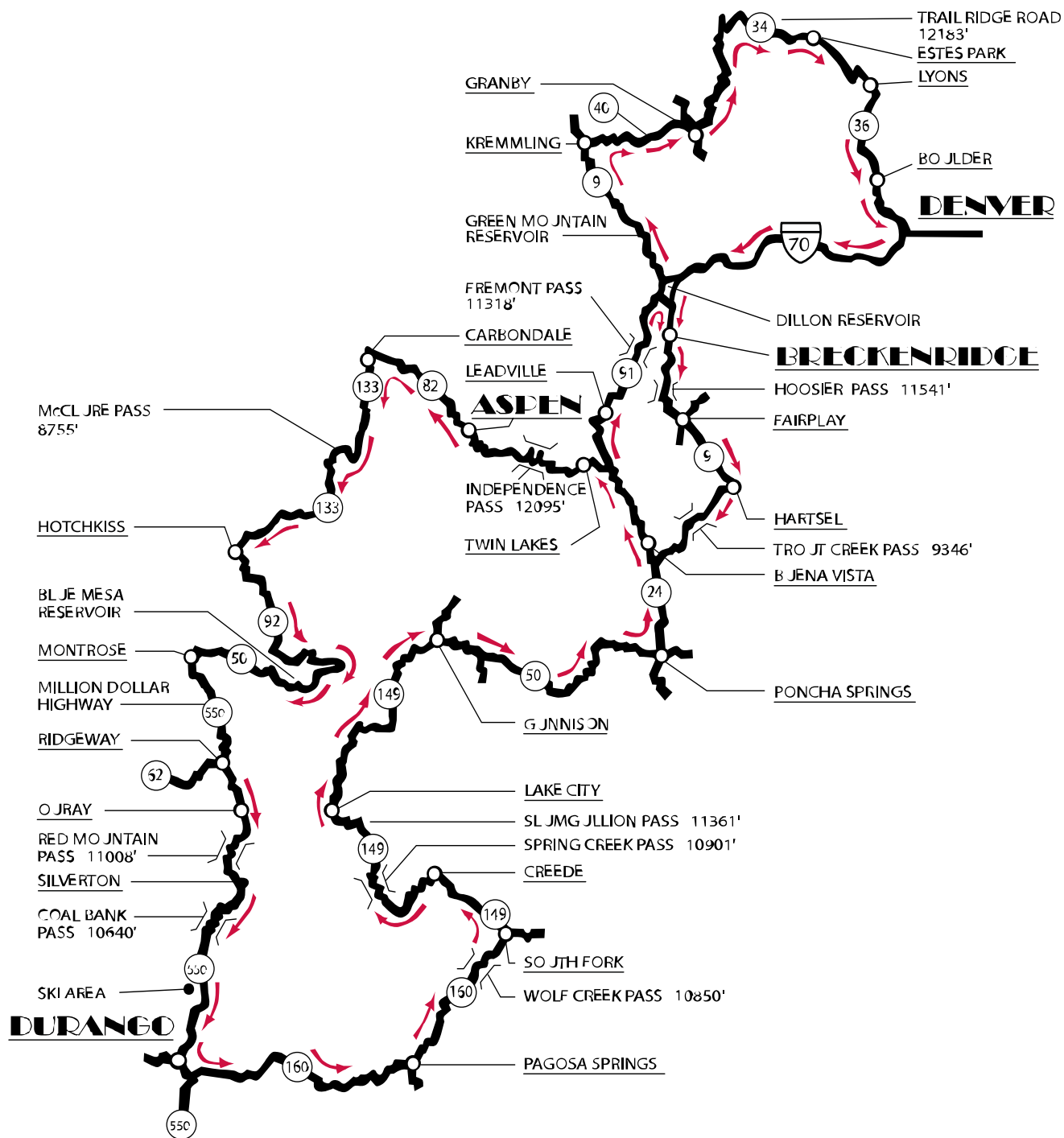


Mr. Kaufman, you are a brave man



SEPTEMBER 19-24, 2004

2004 RALLYE



Denver West Marriott
1717 Denver West Blvd, Golden, CO
303-279-9100

Hotel Jerome
330 East Main Street, Aspen, CO
970-920-1000

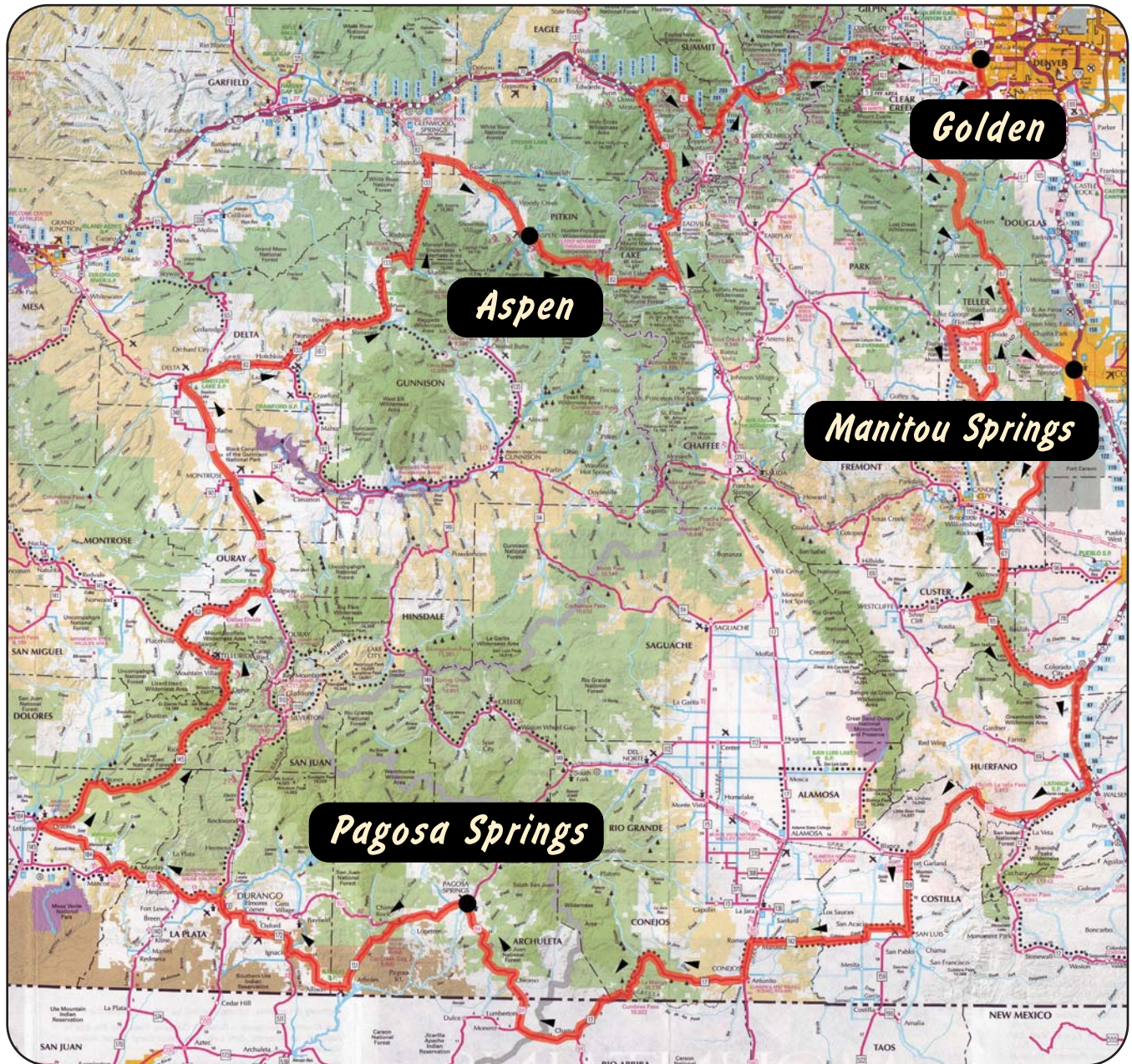
Durango Double Tree
501 Camino Del Rio, Durango, CO
970-259-6580

Mountain Thunder Lodge
50 Mountain Thunder Dr, Breckenridge, CO
970-547-5650



SEPTEMBER 18-23, 2005

2005 RALLYE



Golden

Aspen

Manitou Springs

Pagosa Springs

Denver West Marriott

1717 Denver West Blvd, Golden, CO
303-279-9100

The Cliff House

306 Canon Ave, Manitou Springs, CO
719-785-2408

Pagosa Lodge

3505 West Hwy 160, Pagosa Springs, CO
800-523-7704

Hotel Jerome

330 East Main Street, Aspen, CO
970-920-1000

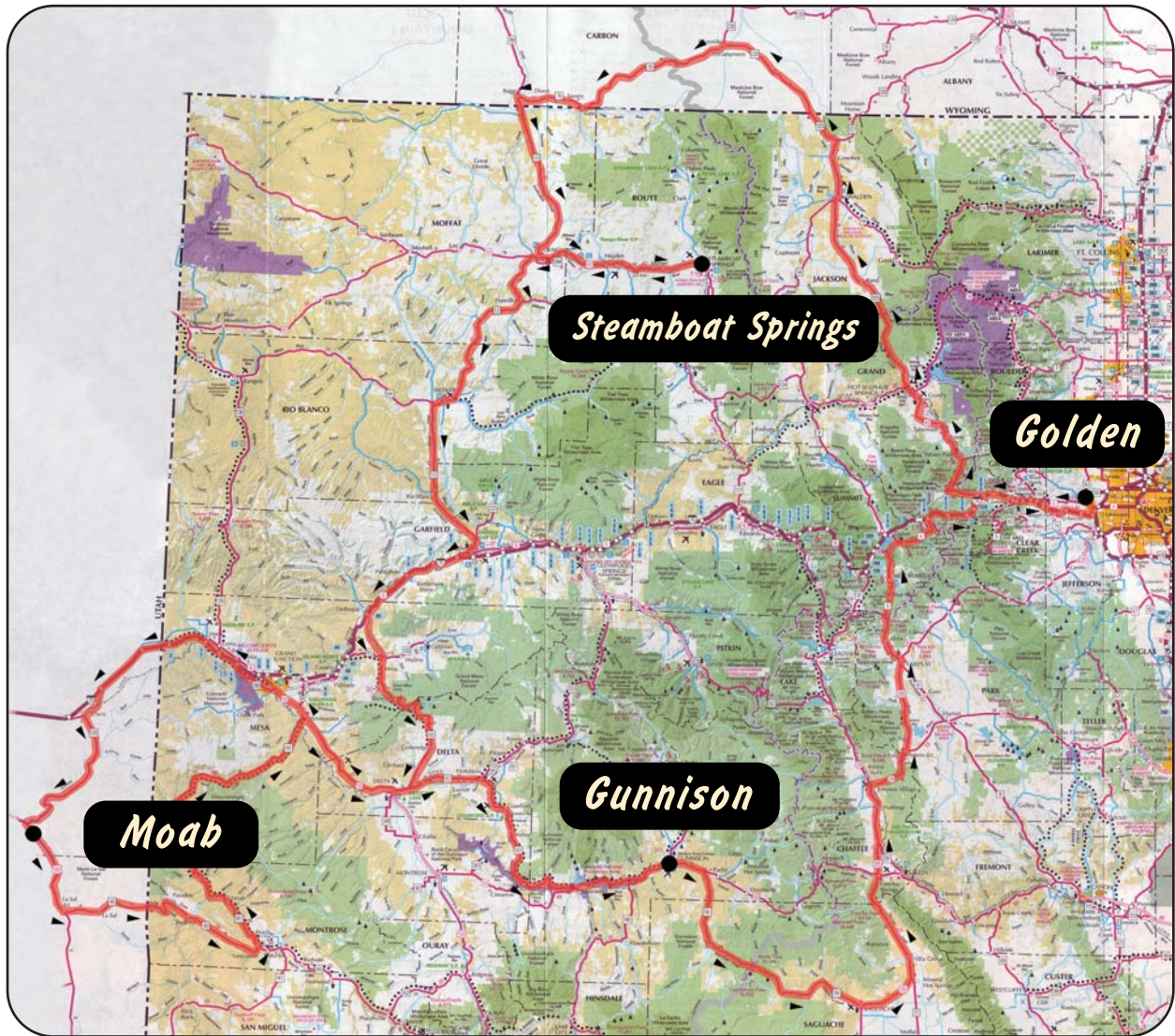
"The only thing wrong with a perfect drive to work is that you end up at work." - Unknown



SEPTEMBER 17-22, 2006

A stylized signature or logo in the bottom right corner, consisting of several vertical, wavy lines.

2006 RALLYE

**Golden Hotel**

800 11th Street, Golden, CO
303-279-0100

Steamboat Grand Hotel

2300 Mt Werner Circle, Steamboat Springs, CO
970-871-5500

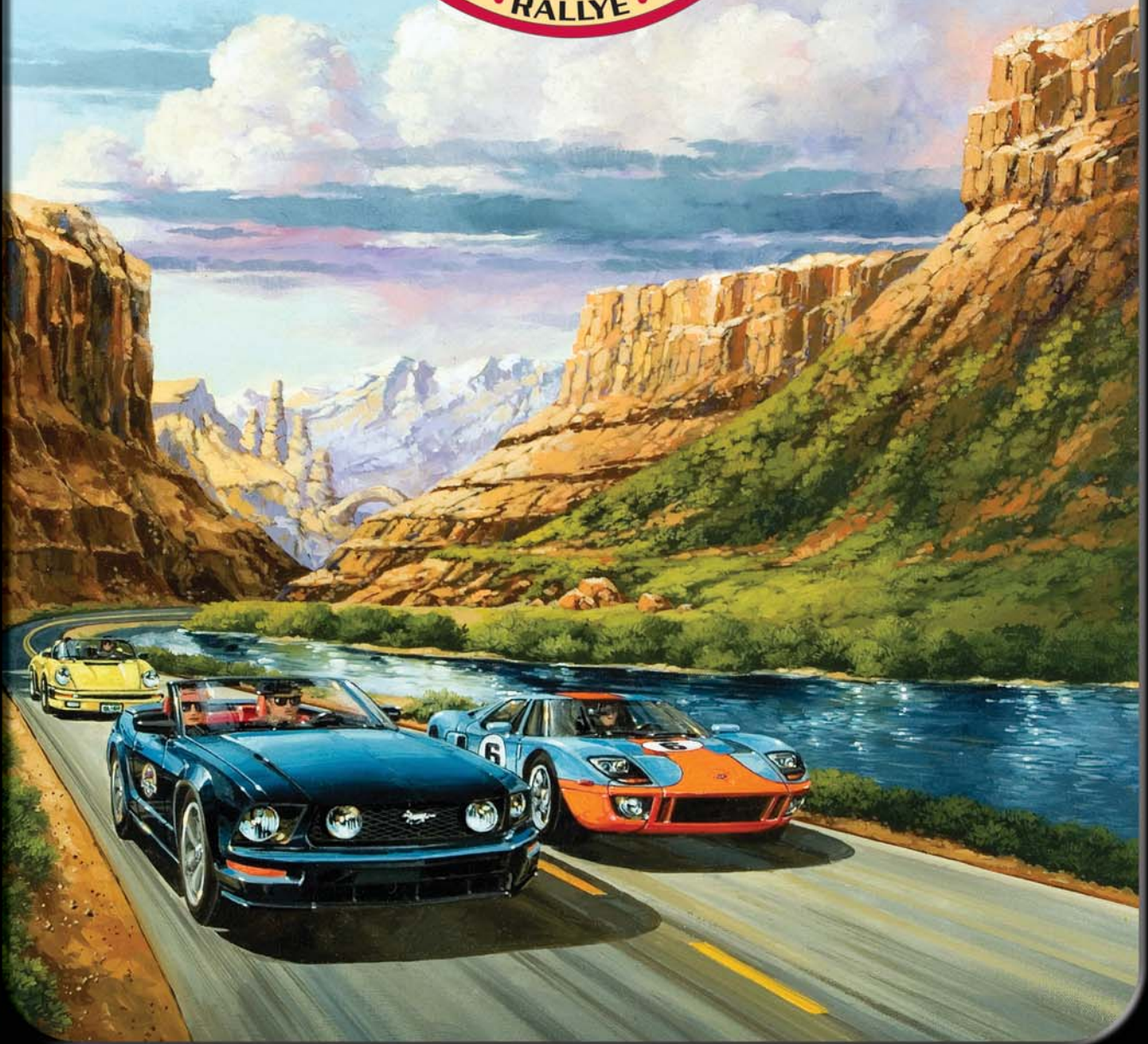
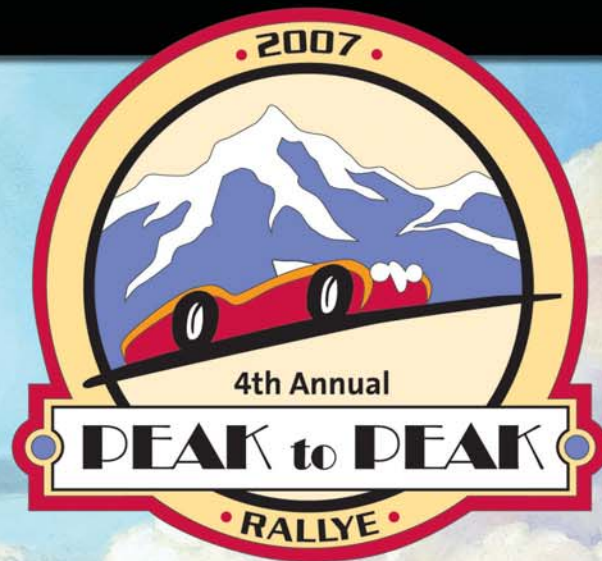
Red Cliffs Lodge

Mile Post 14, Hwy 128, Moab, UT
435-259-2002

Holiday Inn Express

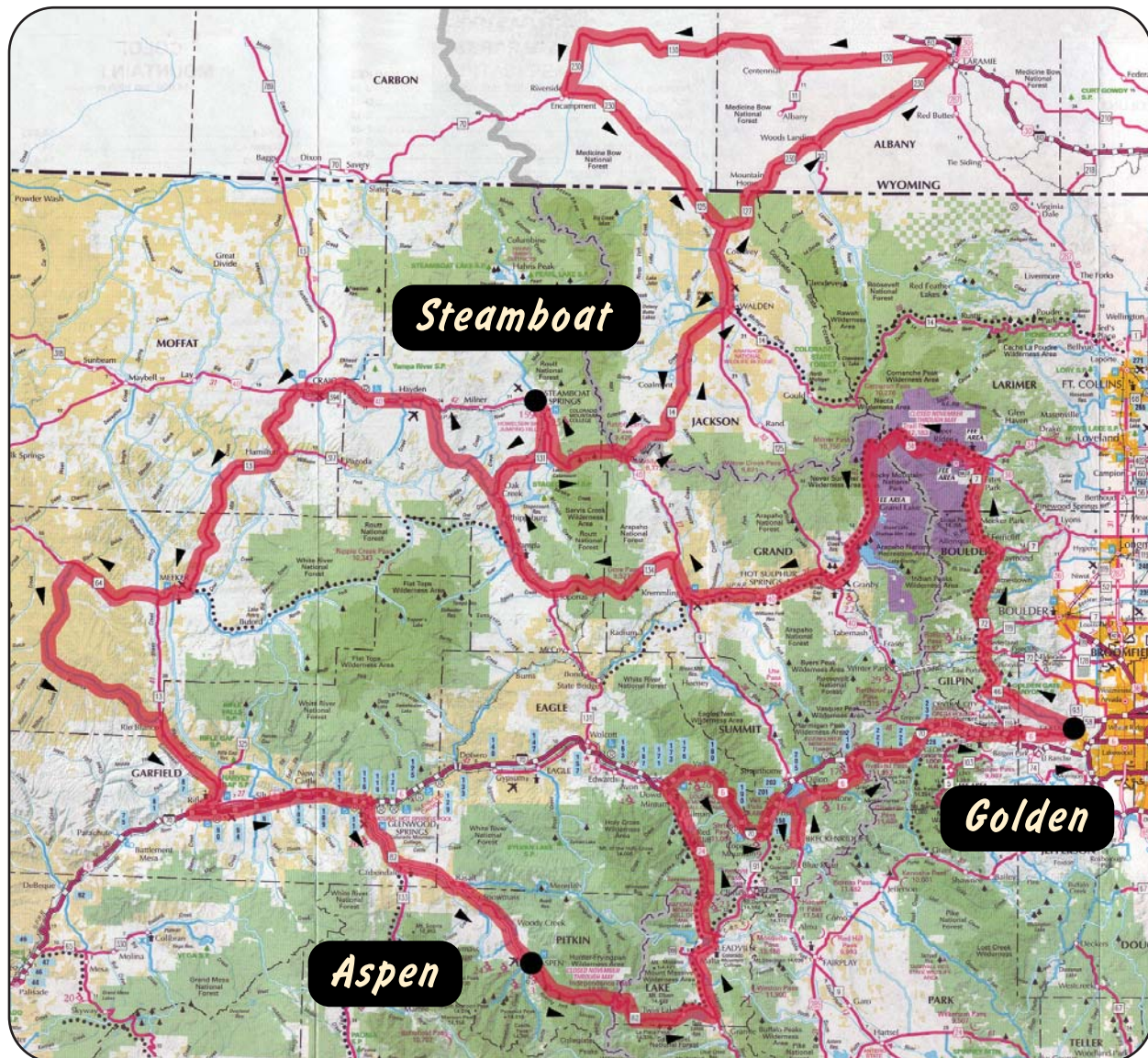
910 E Tomichi Ave, Gunnison, CO
970-641-1288

"Baseball is like driving. It's the one who gets home safely that counts." - Tommy Lasorda



September 16-21, 2007

2007 RALLYE



Golden Hotel

800 11th Street, Golden, CO
303-279-0100

Steamboat Grand Hotel

2300 Mt Werner Circle, Steamboat Springs, CO
970-871-5500

St. Regis

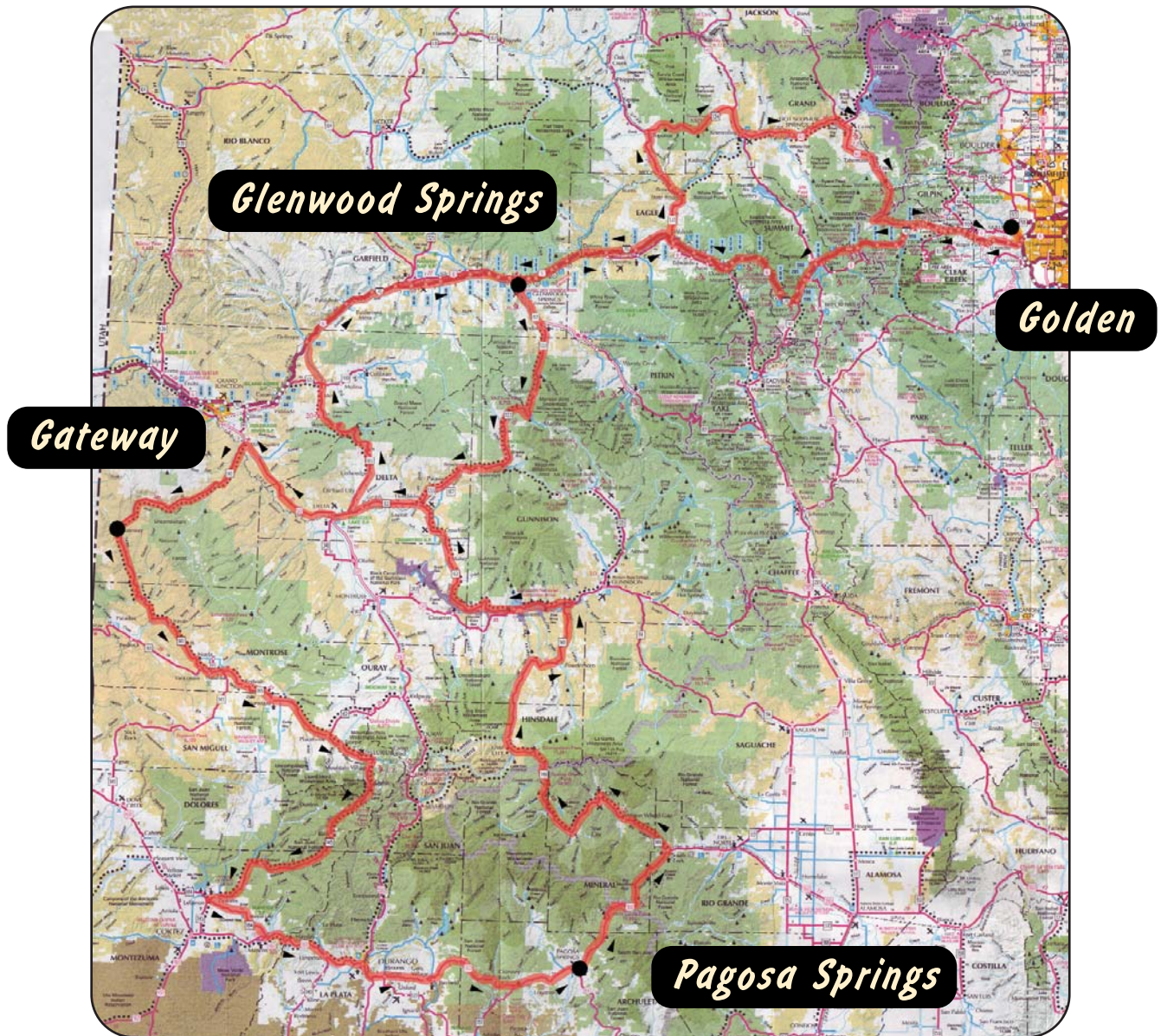
315 East Dean Street, Aspen, CO
970-920-3300

"Asking someone else to drive your sports car is like asking someone else to kiss your girlfriend." - Amit Kalantri



September 14-19, 2008

2008 RALLYE



Golden Hotel
800 11th Street, Golden, CO
303-279-0100

Gateway Canyons
43200 Hwy 141, Gateway, CO
970-931-2458

The Springs Resort
165 Hot Springs Road, Pagosa Springs, CO
970-264-4169

Hotel Colorado
526 Pine Street, Glenwood Springs, CO
970-945-6511

*"I think a lot of psychopaths are just geniuses who drove so fast
that they lost control." - Criss Jami*

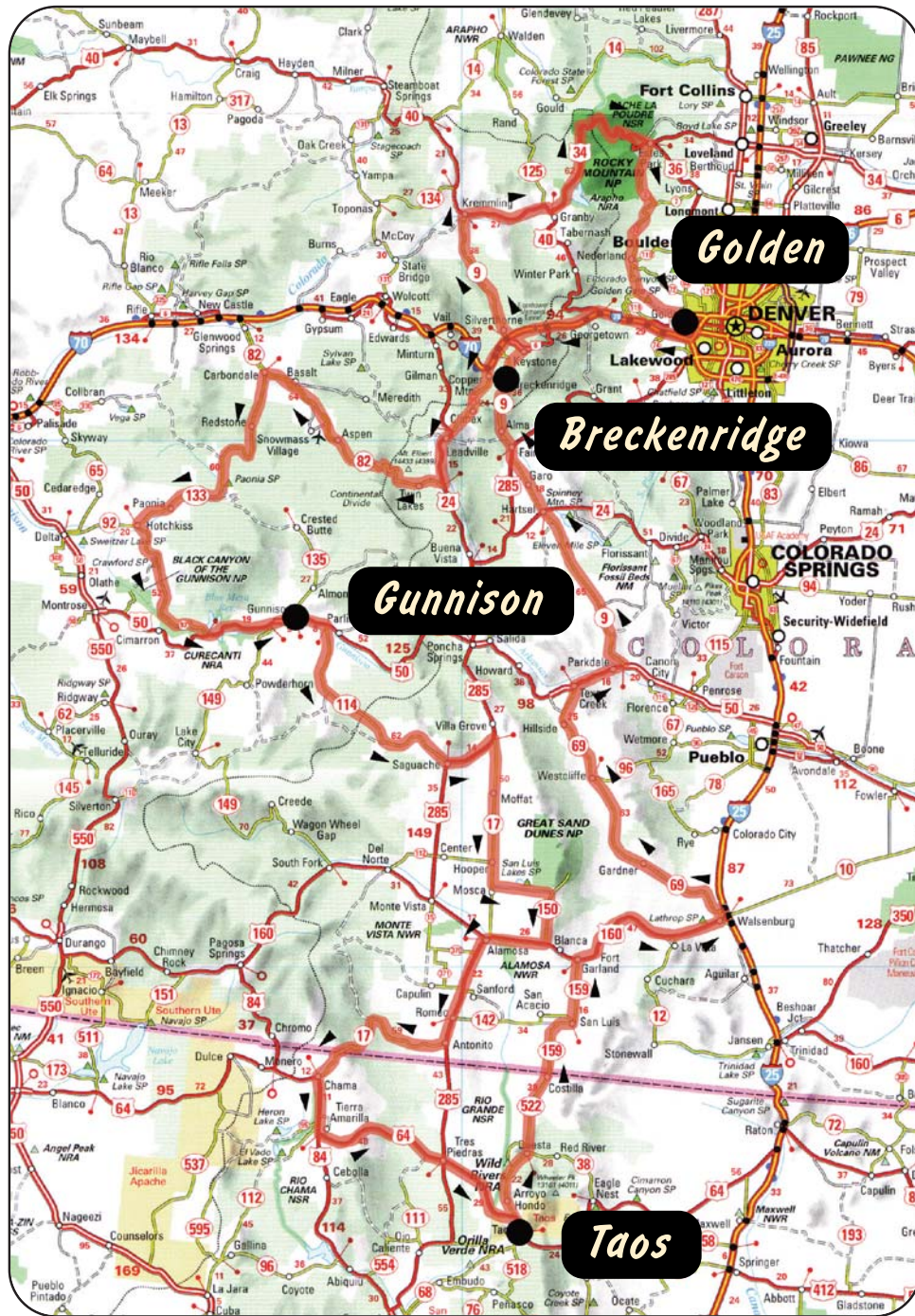


Commemorative Edition

September 20-25, 2009



2009 RALLYE



Golden Hotel
800 11th Street, Golden, CO
303-279-0100

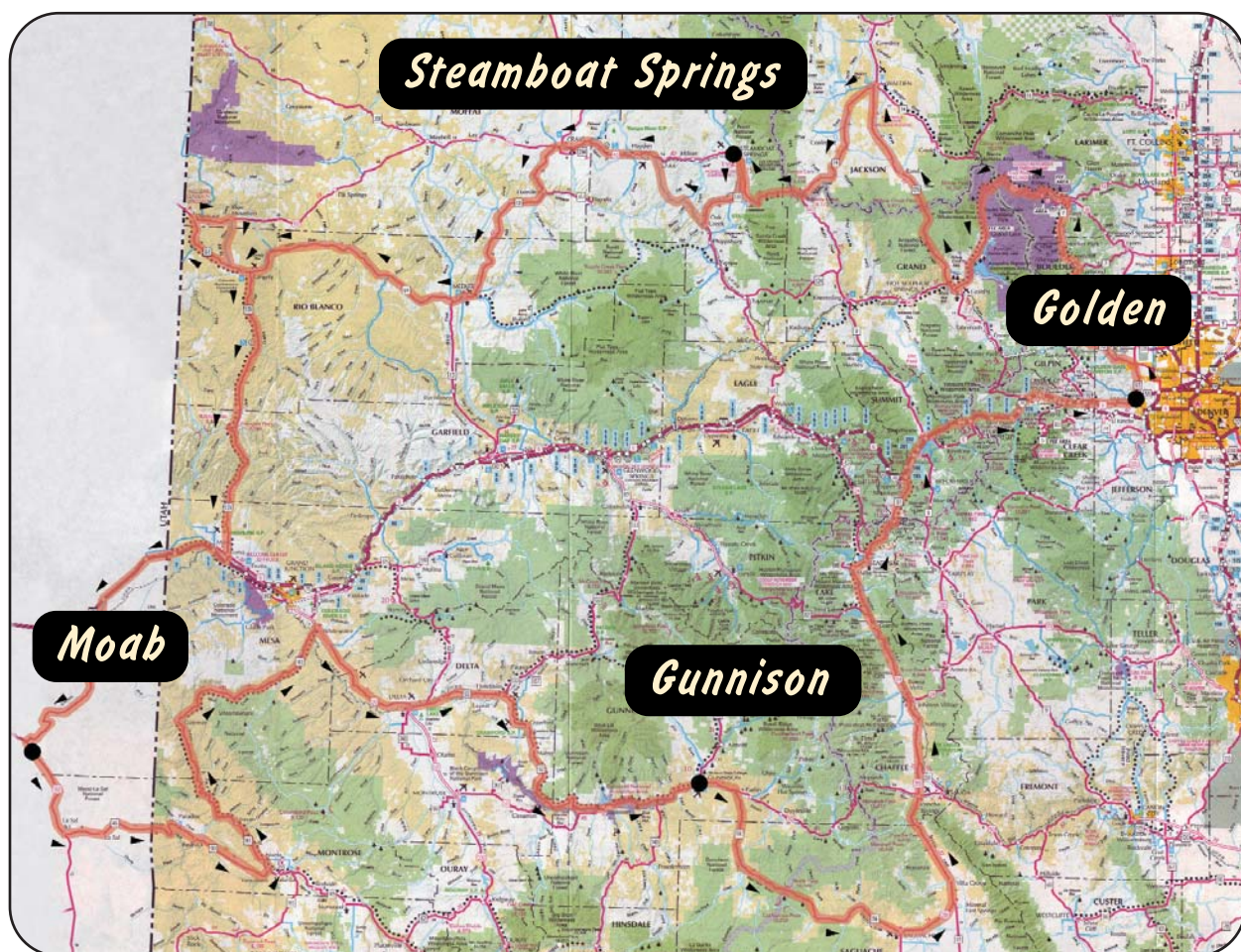
Holiday Inn Express
910 East Tomichi Ave, Gunnison, CO
970-641-1288

El Monte Sagrado
317 Kit Carson Road, Taos, NM
575-737-9883

Mountain Thunder Lodge
50 Mountain Thunder Dr, Breckenridge, CO
970-547-5650



September 12-16, 2010

**Golden Hotel**

800 11th Street, Golden, CO
303-279-0100

Steamboat Grand Hotel

2300 Mt Werner Circle, Steamboat Springs, CO
970-871-5500

Red Cliffs Lodge

Mile Post 14, Hwy 128, Moab, UT
435-259-2002

Holiday Inn Express

910 East Tomichi Ave, Gunnison, CO
970-641-1288

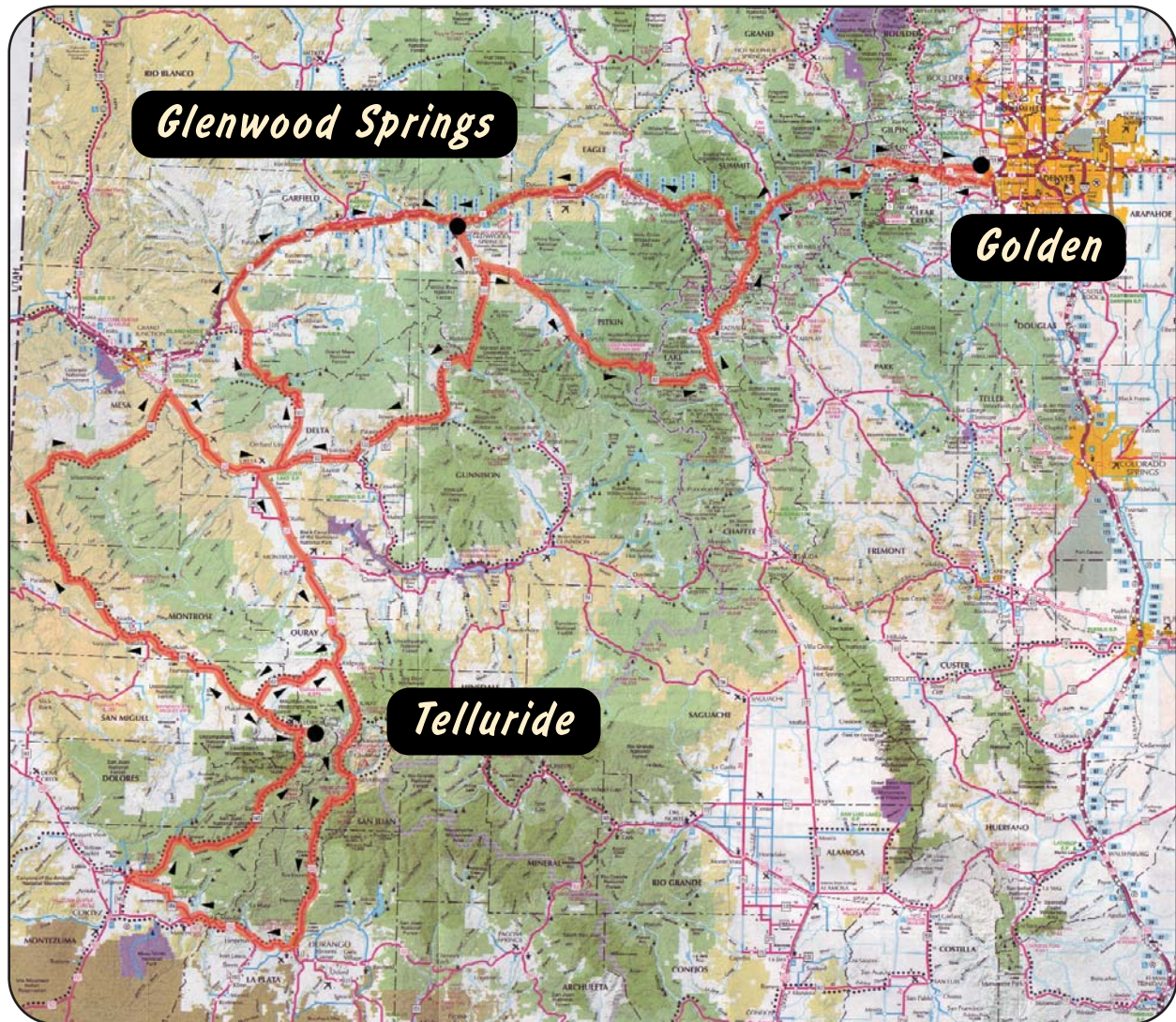
"Driving at the speed limit.....hideous thought." - Unknown



September 11-16, 2011



2011 RALLYE

**Golden Hotel**

800 11th Street, Golden, CO
303-279-0100

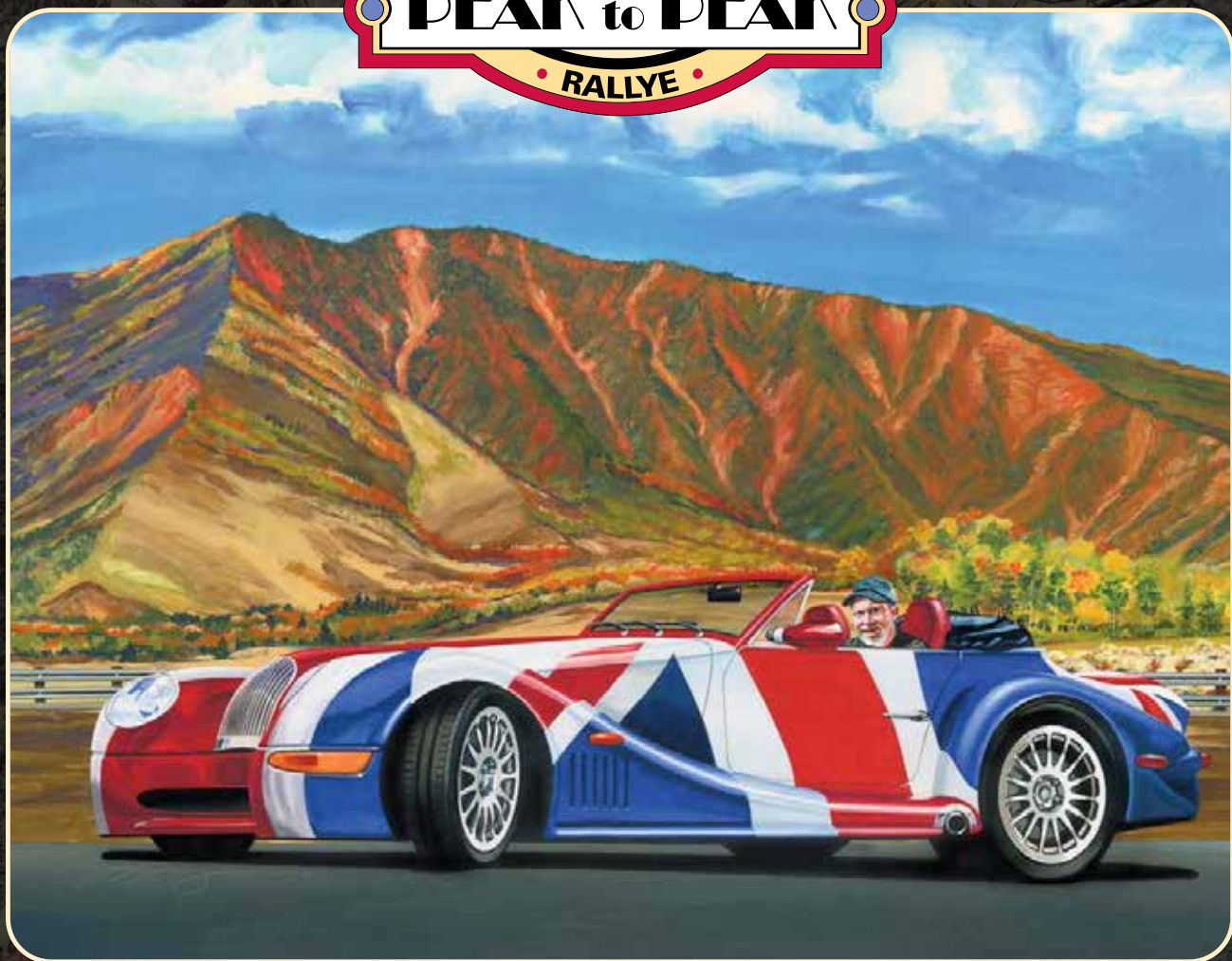
Marriott Courtyard

105 Wolfsohn Rd, Glenwood Springs, CO
970-947-1300

Hotel Madeline

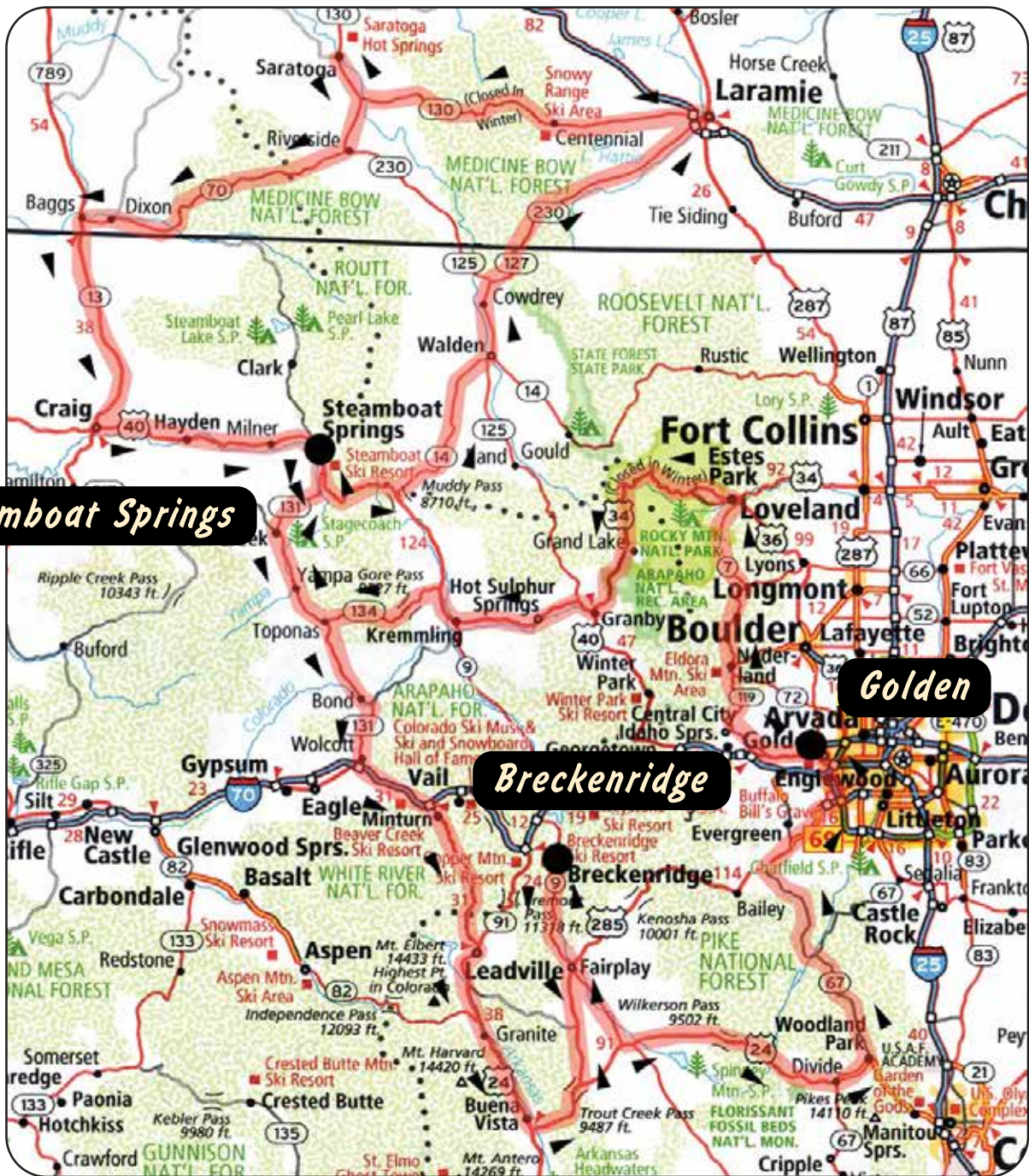
568 Mountain Village Blvd, Telluride, CO
970-369-0880

*"Just because you're sober, don't think you're a good driver."
- John Irving*



September 14-18, 2014

2014 RALLYE



Golden Hotel
800 11th Street, Golden, CO
303-279-0100

Steamboat Grand Hotel
2300 Mt Werner Circle, Steamboat Springs, CO
970-871-5500

Mountain Thunder Lodge
50 Mountain Thunder Dr, Breckenridge, CO
970-547-5650

"Never has your Buick found this forward a gear." - Richard Hugo



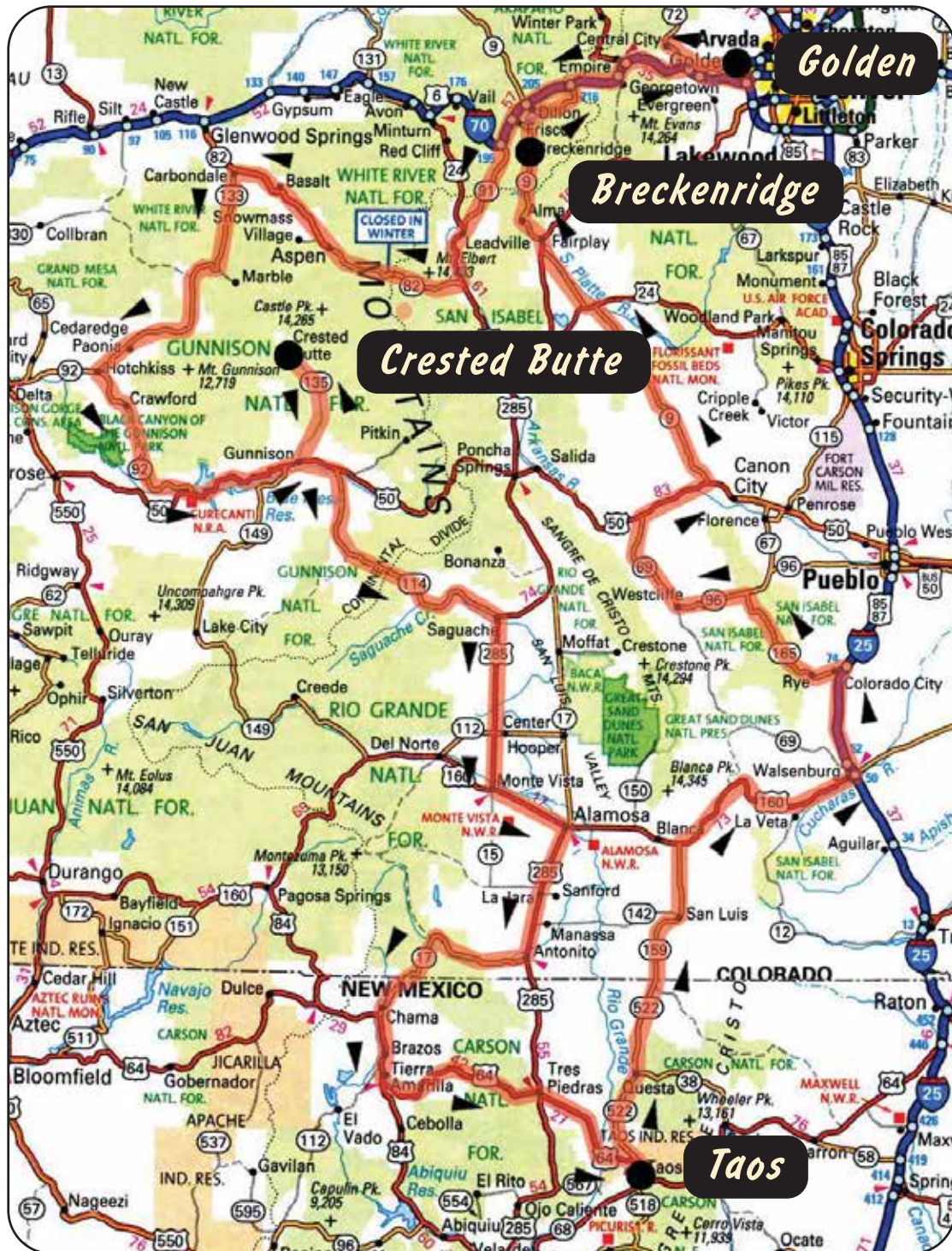
2015

PEAK TO PEAK RALLYE

Celebrating our 10th Adventure
September 13-17, 2015



2015 RALLYE



Golden Hotel

800 11th Street, Golden, CO
303-279-0100

Grand Lodge

6 Emmons Road, Mt. Crested Butte, CO
970-349-8000

El Monte Sagrado

317 Kit Carson Road, Taos, NM
575-737-9883

Mountain Thunder Lodge

50 Mountain Thunder Dr, Breckenridge, CO
970-547-5650

2016 EVENT PROGRAM

September 18-23, 2016



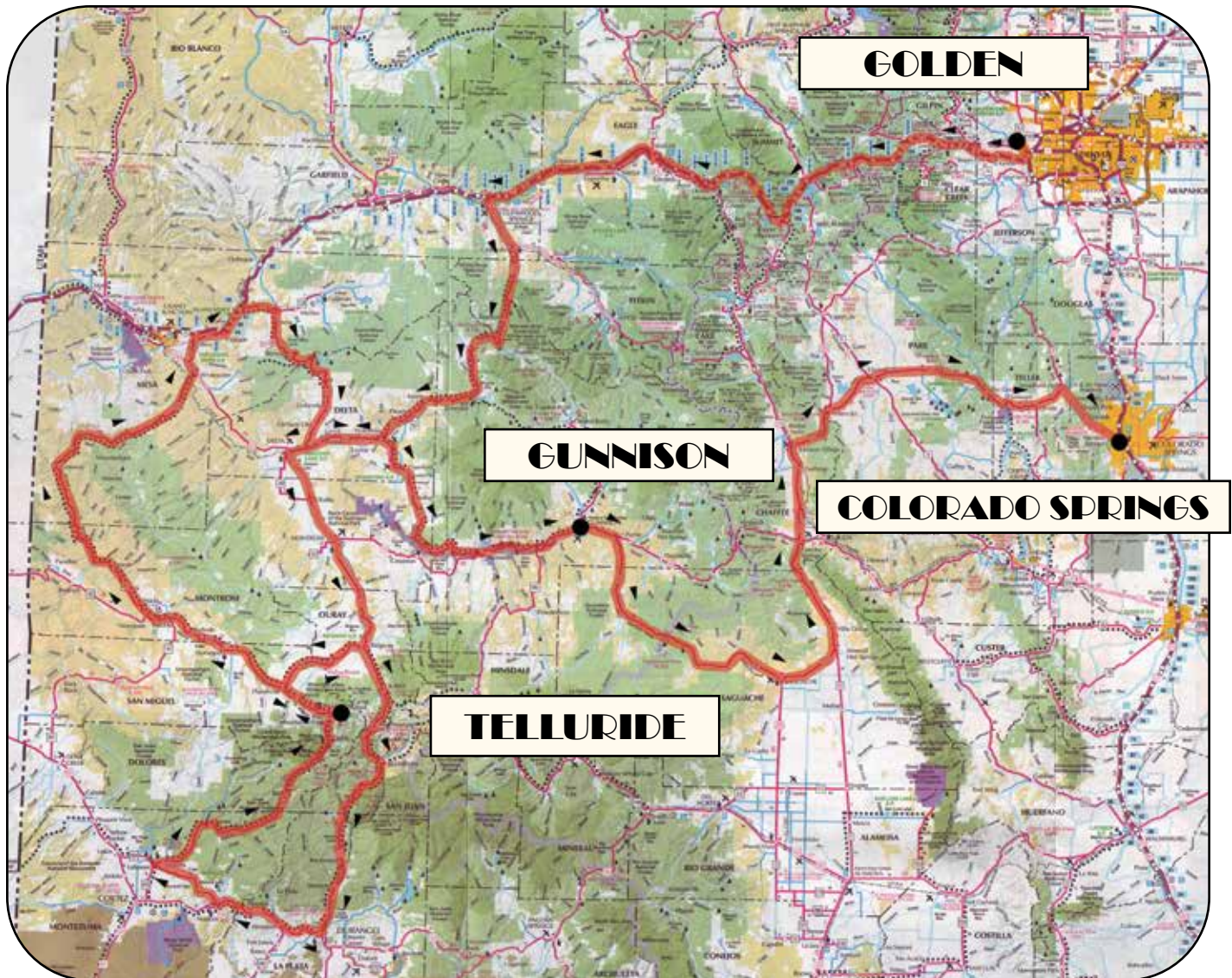
PEAK TO PEAK RALLYE



Presented by **Porsche of Colorado Springs**



2016 RALLYE

**Golden Hotel**

800 11th Street, Golden, CO
303-279-0100

Hotel Madeline

568 Mountain Village Blvd, Telluride, CO
970-369-0880

Holiday Inn Express

910 Tomichi Avenue, Gunnison, CO
970-641-1288

Cheyenne Mountain Resort

3225 Broadway Valley Road, Colorado Springs, CO
719-538-4000

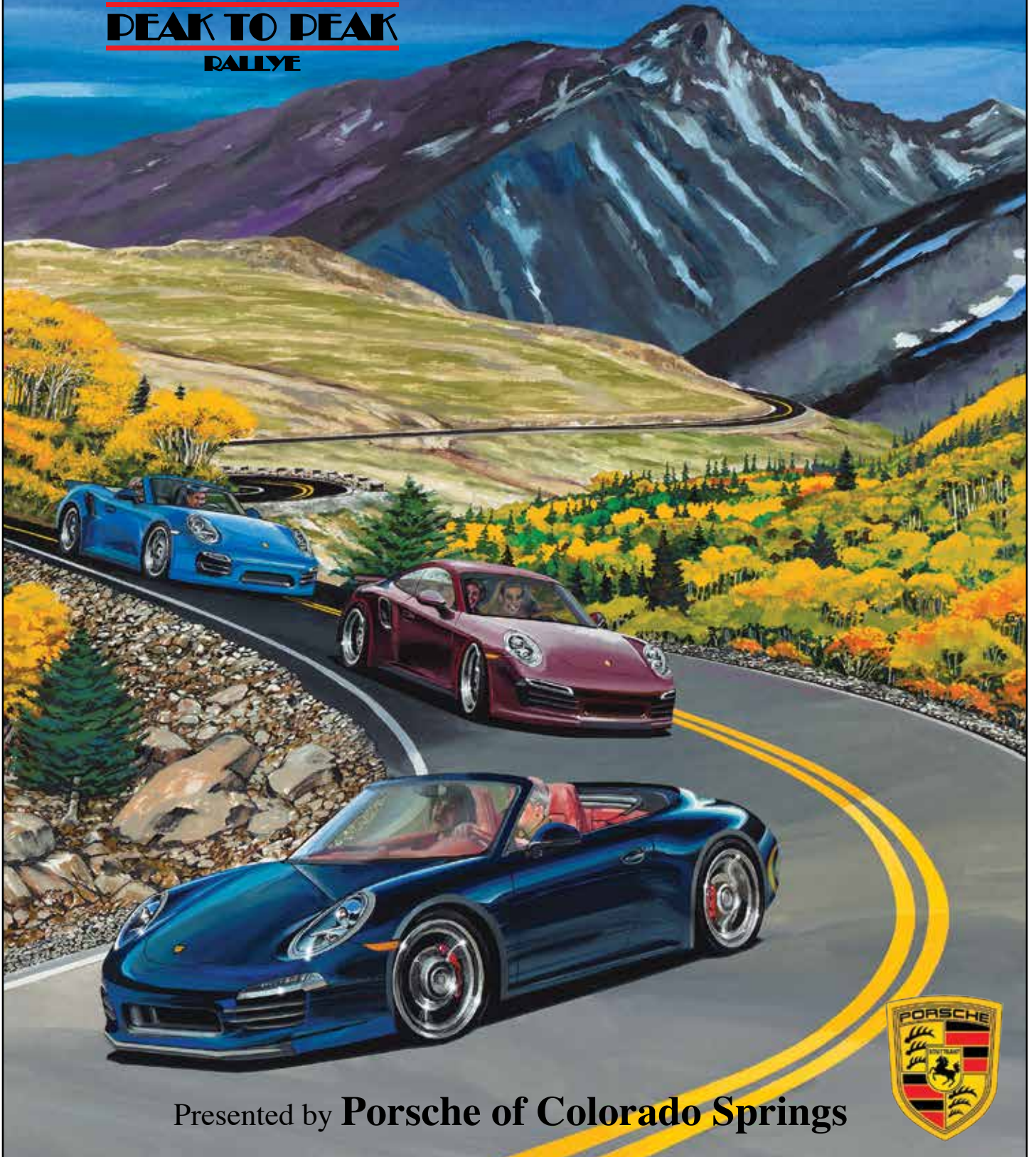
"We were miles away from our real lives." - Maggie Steifvater

2017 EVENT PROGRAM

SEPTEMBER 17-21



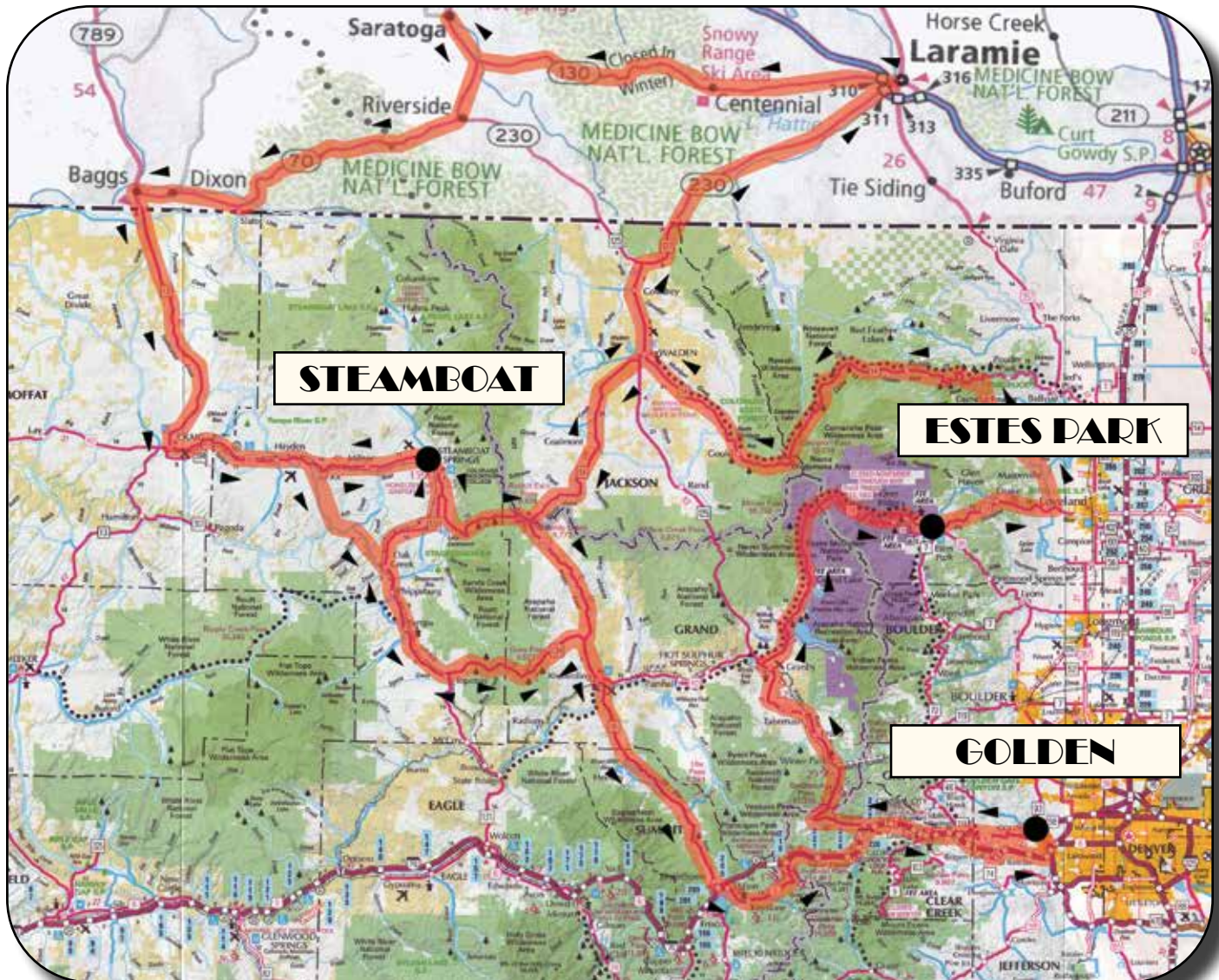
PEAK TO PEAK
RALLYE



Presented by **Porsche of Colorado Springs**



2017 RALLYE



Golden Hotel
800 11th Street, Golden, CO
303-279-0100

Stanley Hotel
333 E Wonder View Ave, Estes Park, CO
970-586-3371

Steamboat Grand Hotel
2300 Mt Werner Circle, Steamboat Springs, CO
970-871-5500

"Life is only a fast lane if you get into a lane and drive fast." - Nikhil Rao



Scenery & Machinery, in perfect Harmony!

SAVE THE DATES
SEPTEMBER 15-19, 2019



*Who learned about speed early on? Guess correctly and win....
absolutely nothing*



The picture says it all

Ferrari

Portofino

OPEN UP
TO A
NEW BREED



NOW TAKING RESERVATIONS

The Destination for Ferrari Approved Certified Pre-owned



2013 458 Spider

The Ferrari 458 Spider, features a 4.5 liter V-8 that creates an astonishing 570 HP with some of the most glorious engine music ever made.

\$224,458



2012 California

With an original MSRP of over \$260,000, this California is a brilliant expression of Ferrari's sporty DNA.

Powered by a 453 HP V-8

\$131,453



OFFICIAL FERRARI DEALER

Ferrari of Denver

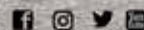
1480 E. County Line Road, Highlands Ranch, CO 80126 • 303.730.7340 • www.ferrariofdenver.com

MID-LIFE, MAYBE. CRISIS, HARDLY.



There's a reason more people trust Hagerty with the cars they love. We make the experience of owning classics better, with insurance, valuation tools, an award-winning magazine and more—all created by people who share your passion for cars.

Drive with us. Hagerty.com | 800-922-4050 | Local Agent



Hagerty, the Hagerty logo and Hagerty are trademarks of The Hagerty Group, LLC. ©2016 The Hagerty Group, LLC. All rights reserved. Valuation, insurance and model names and logos are property of their respective owners and their inclusion does not imply sponsorship or affiliation with Hagerty or any of its subsidiaries or affiliates.