

2019 EVENT PROGRAM

SEPTEMBER 15-19



PEAK TO PEAK
RALLYE



Presented by **Porsche Colorado Springs**





PORSCHE

Colorado Springs



Porsche Colorado Springs

We invite you to come visit the only exclusive Porsche Dealership in Colorado!

Our service and passion has been awarded for the 7th time, being identified as one of the top 25 Porsche Dealers in the nation. Experience Porsche Classic Cars and also the newest Porsche products offered one car at a time.

Porsche Colorado Springs
917 Motor City Drive
Colorado Springs, CO 80905
719-219-1911

www.porscheofcoloradosprings.com

2017
Premier
Porsche Dealer

**Porsche Classic
Partner**

TABLE OF CONTENTS

Letter from the Peak to Peak Team	3	Car Photos	14
2018 Rallye Charity Recap	4	Rallye Notes - Day 3	15
2019 Rallye Charities	5	Route Instructions - Day 3	16
Rallye Route / Overall Map	6	Route Map - Day 3	17
List of Entrants	7	Car Photos	18
Altitude Tolerance	8	Rallye Notes - Day 4	19
Driver Etiquette & Safety Tips	8	Route Instructions - Day 4	20
Luggage / Mechanical Breakdowns	9	Route Map - Day 4	21
Time and Distance	10	Car Photos	22
Rallye Notes - Day 1	10	Rallye Notes - Day 5	23
Rallye Notes - Day 2	11	Route Instructions - Day 5	24
Route Instructions - Day 2	12	Route Map - Day 5	25
Route Map - Day 2	13	Past Rallye Route Covers & Maps	26

IMPORTANT NUMBERS

Technical Support

Chris Eatherton **303-525-7250**

All Other Needs

Larry Winkler **720-219-7078**

Toni Winkler **720-219-7080**

Greg Mathews **303-589-5933**

Mark Burgard **303-884-3699**

Cisco Martinez **303-619-2884**

Lodging

Golden Hotel
800 11th Street
Golden, CO
303-279-0100

Holiday Inn Express
910 E Tomichi Ave
Gunnison, CO
970-641-1288

La Posada de Santa Fe
330 E Palace Ave
Santa Fe, NM
505-986-0000

Marriott
5580 Tech Center Dr
Colorado Springs, CO
719-260-1800

*The cover painting was done by
renowned artist Darrell Mayabb*



OFFICIAL FERRARI DEALER

Ferrari of Denver

Ferrari is launching Genuine Maintenance, a scheduled maintenance programme that will accompany all new vehicles for their first seven years. Routine annual checks, detailed inspections using the most up-to-date diagnostic tools, and qualified personnel trained at the Ferrari Training Centre in Maranello: these are just some of the benefits reserved for customers joining the new programme.

The Official Network, with its professionalism and experience, will explain all the features of Genuine Maintenance in detail and carry out scheduled maintenance to ensure that your car always meets Maranello's standards for safety, performance and reliability.

www.ferrari.com

Ferrari of Denver
1480 East County Line Road, Highlands Ranch, CO 80126
Tel: 303.730.7340
SALES@FERRARIOFDENVER.COM

WELCOME TO THE PEAK TO PEAK

Welcome Everyone to the 2019 Edition of The Peak to Peak

Over the years Peak to Peak has become a very dynamic event which has allowed us to make new friends and enjoy some special fun time with old friends. The time we get to spend while having a meal or two or three each day has become a favorite fall ritual for many of us. The festivities will unofficially start on Saturday evening. Lamar Street Center is the site for a casual gathering with plenty of finger foods and drinks. Another special treat is the official welcome reception and dinner, which will take place at the famous Sculptured House. Larry and Toni Winkler are our hosts for both of these events. Thanks go out to the Winkler's for sharing their little slices of heaven.

This year we will be visiting two areas in Colorado that we have visited before, which are home to a couple of our favorite charities. The charity aspects of Peak to Peak have become very important to us so we want to make sure we are helping out the best possible 501c organizations.

Along with the places that are familiar to us, we will be treading plenty of new territory. 2019 brings about the first time we visit Santa Fe, NM. La Posada de Santa Fe will serve as our home for two of the nights we'll be on the road. This will offer up an opportunity for a choice of activities to be had on our stay-over day. Will you choose to make the planned loop drive, or will you decide to stay and hangout in Santa Fe? Choices are good.

For most of us we are aware that because we drive some very beautiful cars we will certainly cause some much undesired attention from local and state law enforcement. Just keep in mind that we are not a high-speed police escorted adventure and should obey all traffic laws during the drive. That is, unless you actually enjoy the kind of attention that includes flashing lights in your rearview mirror.

For the second time, our journey will come to a close in Colorado Springs. Our presenting sponsor, Porsche Colorado Springs, has invited us to hold our closing banquet at their fabulous facility. This evening should be anticipated as our stop there in 2016 was a big hit. To Don and Laurie Hicks, you are appreciated.

And a special thanks to YOU! Peak to Peak really is a one-of-a-kind experience. Special folks make for a special time. The fact that we get to cruise the Rockies for four days 'aint such a bad gig either. Please let us know if there is anything we can do to make this a truly memorable occasion. We are here to help.

Warm regards from your Peak to Peak Team!

2018 RALLYE CHARITY RECAP



The Abraham Connection Homeless Shelter

Once our route has been determined, one of the first things we consider is what areas should be targeted for our charitable donations. In some cases that question is easily answered due to our familiarity with where we are going and who we have had success dealing with in past rallies. In 2018 that was the case with one of the organizations that was selected. For the third time, the Abraham Connection in Delta, Colorado became the recipient of such funds from Peak to Peak participants and sponsorship.

Abraham Connection Mission Statement: To offer emergency food and shelter to those in need in Delta County by offering a hand up, not a hand out! Well that's a mission we can certainly embrace and we in turn will continue to offer a hand up to this outstanding organization whenever we have the opportunity. This year's total came to \$17,000.

Inter Faith Food Bank

Day 1 of our road trip found us stopping for lunch in Craig, Colorado. After much research and vetting, the determination was made that Inter Faith Food Bank would be the recipient of our donations during our layover in this Northwestern Colorado community. While feasting on Mexican food at Fiesta Jalisco the presentation was made to Inter Faith representative, Bonnie Hampton. It's always extra special making donations to organizations that aren't familiar with us. Their reaction to the generosity of our participants tends to catch them off guard, therefore making their expressed appreciation quite heartwarming. We are confident that our \$10,000 donation made a significant impact on this worthy operation. Keep up the great work, Bonnie and crew. Peak to Peak salutes you.

*"Adults on board! We want to live too."
- Seen on a bumper sticker*



2018 presentation to Inter Faith Food Bank

La Puente Home

Another of our pet charities is La Puente Home. Located in Alamosa, Colorado, La Puente provides food, shelter, and advocacy for the homeless and citizens in crisis in what is the poorest county in Colorado. When all was said and done Peak to Peak was able to send a check for \$8500 to La Puente. We were not surprised by Director Lance Cheslock's reaction as he has always been genuinely appreciative of our assistance. It is an absolute honor to associate ourselves with such an outstanding organization.



The 2018 Spirit of the Peak award was presented to Harry & Cris Mathews during the closing banquet

2019 RALLYE CHARITIES

It is not always possible for us to complete our vetting process and know what 501c3 non-profit organizations we will assist prior to sending our Event Program to print. In this case, however, the decision was a slam-dunk since we will be revisiting two of our go-to's from previous rallies; The Gunnison Country Food Pantry and La Puente Home have proven themselves more than worthy of our attention.

As a reminder, our vetting criteria is quite simple; we want to assist immediate need facilities, homeless shelters or food banks with little or no overhead. That way most if not all of our donation goes to the people who need it most, and is not absorbed into overhead and staffing costs. Thanks to Peak to Peak participants and sponsors for making these efforts possible.

Gunnison Country Food Pantry

Hunger is a dirty word at the GCFP. We have worked to alleviate food insecurity in the Gunnison Valley. Our mission is to serve those in need by providing food assistance in a kind, confidential and supportive environment. Nearly 55 volunteers serve where dignity and nutrition are priorities for all Pantry recipients. Over a

span of 55 years the Food Pantry has morphed from an obscure room in the basement of the County Courthouse to a small, inviting storefront in a discreet area of Gunnison. Currently, the GCFP distributes 16,000 lbs of food to over 900 households per month. One aspect of how GCFP serves the community is through the Food for Children Program, which sends home "Gunny-Packs" of food for needy students and provides 5000 classroom snacks per month.

La Puente Home

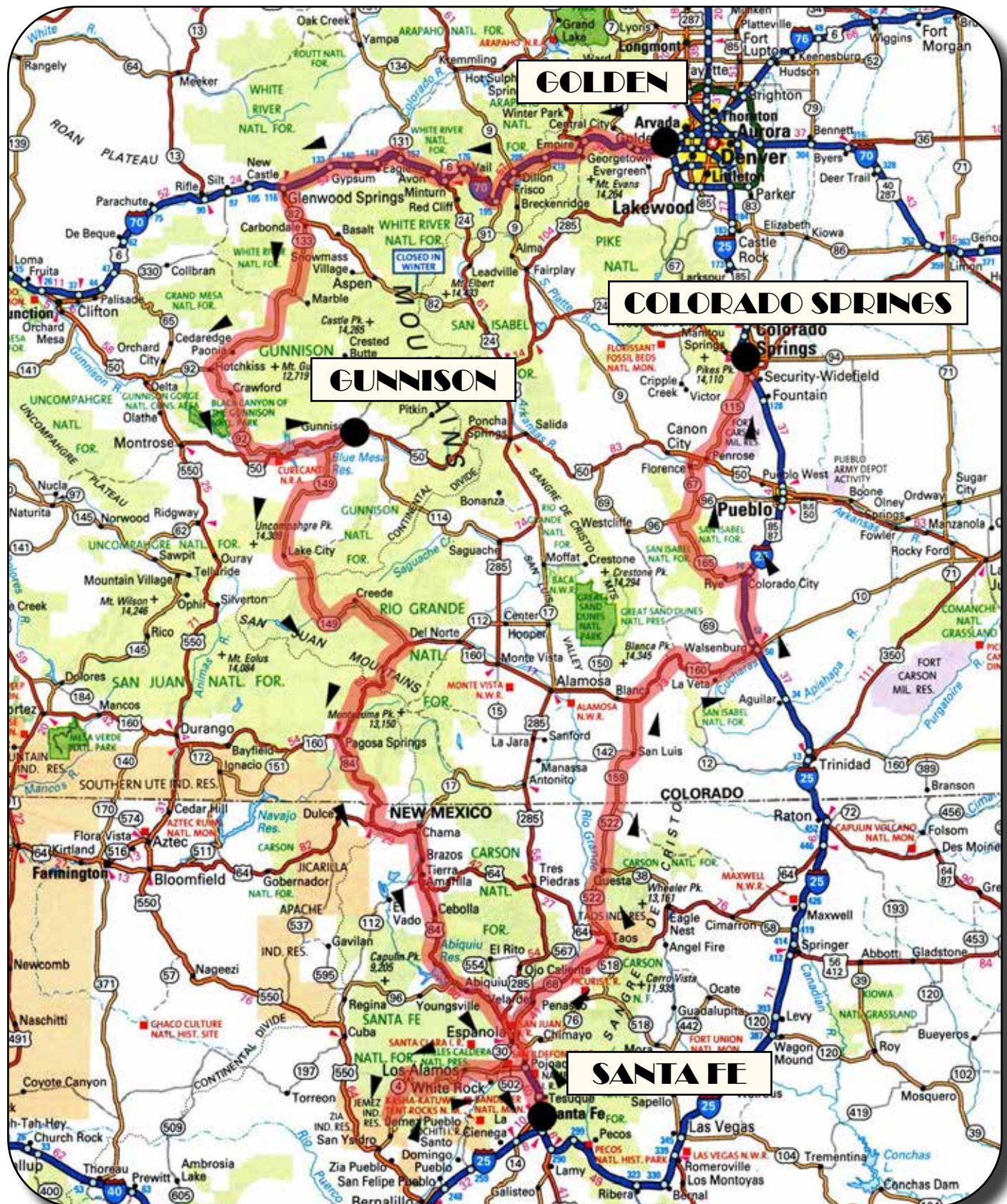
La Puente is a nonprofit organization serving Colorado's San Luis Valley by providing food, shelter, and advocacy for the homeless and community members in crisis. La Puente endeavors to meet immediate needs and to empower people to live independently with dignity. The project began in 1982 as a response to the community's need to house and provide assistance to a number of homeless and under-served families and individuals in the Valley. Since 2000, the organization has doubled the size of the shelter in order to serve the increasing needs of the growing community.

"When a man opens a car door for his wife, it's either a new car or a new wife." - Prince Philip



NEWSFLASH: 9:00am + 12'000 elevation = CHILLY

2019 RALLYE ROUTE



LIST OF ENTRANTS

1	Dan & Paula Alefs Scottsdale, AZ <i>2017 Ferrari 488 Spider</i>		13	Steve & Liz Lindsay Paradise Valley, AZ <i>2013 Ferrari California</i>	
2	David & Myrna Bennett Colorado Springs, CO <i>2018 Porsche Turbo S EX</i>		14	Scott & Gretchen Long Colorado Springs, CO <i>2019 Porsche GT2RS</i>	
3	Duncan & Michael Burdick Colorado Springs, CO <i>1969 Jaguar XKE</i>		15	Greg Mathews Arvada, CO <i>2018 Corvette ZR1</i>	
4	Mark Burgard Golden, CO <i>1996 Corvette Grand Sport</i>		16	Harry & Cris Mathews Golden, CO <i>2017 Porsche Turbo S</i>	
5	Jim Edwards & Bill Muir Show Low, AZ <i>1989 Porsche Speedster</i>		17	Rick & Diane Mazer Scottsdale, AZ <i>2016 Porsche Turbo S Cabriolet</i>	
6	Doug & Ruth Freyta Golden, CO <i>2011 Ferrari 458 Italia</i>		18	Peter Monson & Rebecca Lloyd Evergreen, CO <i>2017 Lotus Evora 400</i>	
7	Wayne & Andrew Golomb Muskegon, MI <i>2009 Corvette Convertible</i>		19	David & Eva Schoonmaker Morrison, CO <i>2018 Mercedes Benz GTC</i>	
8	Don & Laurie Hicks Denver, CO <i>2017 Porsche Cayman GTS</i>		20	Doug Smith & Peter Hall Paradise Valley, AZ <i>2011 Mercedes SLS AMG Gullwing</i>	
9	David & Sue Jenkins Manitou Springs, CO <i>2018 Porsche GT2RS</i>		21	Kyle & Bev Turner Evergreen, CO <i>2004 Mercedes SL55 AMG</i>	
10	Rick Kaufman San Francisco, CA <i>1972 Ferrari 365 GTC/4</i>		22	Arnold & Maureen Undzis Highlands Ranch, CO <i>2019 McLaren 600LT</i>	
11	Bill & Kay Kilpatrick Paradise Valley, AZ <i>2013 Porsche Carrera S</i>		23	Fred & Linda Veitch Colorado Springs, CO <i>2016 Porsche GT3RS</i>	
12	Bob Law & Joan Dohrman Reno, NV <i>2004 ZO6 Corvette</i>		24	Larry & Toni Winkler Arvada, CO <i>2018 Ferrari 488 GTB</i>	

"If you don't look back at your car after you park it, you own the wrong car."

ALTITUDE TOLERANCE

If you are not used to high altitude it's a good idea to take it easy the first couple days and drink plenty of water. You can quickly become dehydrated in the dry air of the mountains. Carry bottled water in your car. Eight glasses a day sounds like a lot, but you need it.

Don't forget sunglasses, a hat and your sunscreen. The sun can be very intense at altitude. That is if it doesn't snow...So, bring warm clothes and driving gloves. You just might need them as well.

DRIVER ETIQUETTE & SAFETY TIPS

Peak to Peak Rallye is NOT a high speed rallye. Observation of all traffic laws is essential lest ye be willing to accept consequences that could be levied upon thee by such authoritative organizations that may be called in to play. In other words, play nice or pay the price. This especially holds true in and around built up areas and the many small communities we pass through along the way. We generally attract plenty of attention by sporting our high visibility thoroughbreds alone, but the attention that is far more important is achieved by the behavior that we display. Most folks are not shy about reaching for their cell phones to report any action in which they feel slighted. Our presence will be felt. Please make that presence a positive one!

Use your best judgment and caution on the mountain roads and high elevation passes. Weather conditions

can change quickly in the Rockies, thus it is best to be prepared for anything that Mother Nature decides to throw our way. And speaking of "nature", wildlife of various types can be encountered at any time, especially so in the mornings. Deer, elk, sheep, antelope, goats and other four-legged critters commonly congregate near the many secluded roadways we will travel along. The sign "Open Range" means that cattle are free to wander wherever they wish, which often means in the middle of the road. The rallye coincides with hunting season so beware of two-legged animals in orange vests carrying rifles (possibly drinking beer). It's best not to anger this species.

All rallye cars must be road legal and drivers must carry basic liability insurance as required in Colorado.



TO SAVE THESE DATES

SEPTEMBER 13-17, 2020

LUGGAGE AND MECHANICAL BREAKDOWN

A transporter will be available with some tools and equipment to deal with mechanical problems or to haul a car to the next hotel at the end of the day's driving or to the nearest repair shop. **Although, there will be certain portions of the route that the transporter will not be able to follow due to vehicle length restrictions.**

We will also have a second support vehicle available that will be used to carry any luggage you aren't able to carry in your sports car.



Fred must be up ahead

"Never have more children than your car has windows." - Erma Bombeck



Are you looking for a unique place to host your graduation party or event?
Look no further!

- 15,000 sq. ft.
- Up to 400 capacity
- Free onsite parking
- Stage, microphone, podium, projector, screens
- 2 Bars – liquor license and you pick your caterer



5889 Lamar Street
Arvada, CO 80003

tammy@lamarstreetcenter.com

Call 303-424-0208 to book now!

TIME AND DISTANCE

Your actual travel time depends on weather, traffic, construction zones and stops for photo ops. We have allowed plenty of time to admire the scenery.

Day	Route	Distance	Time
Monday, September 16	Golden to Carbondale	161 miles	2.75 hours
	Carbondale to Gunnison	145 miles	3 hours
		306 miles	5.75 hours
Tuesday, September 17	Gunnison to Pagosa Springs	174 miles	3.5 hours
	Pagosa Springs to Santa Fe	157 miles	2.75 hours
		331 miles	6.25 hours
Wednesday, September 18	Santa Fe to Jemez Springs	79 miles	1.75 hours
	Jemez Springs to Santa Fe	79 miles	1.75 hours
		158 miles	3.5 hours
Thursday, September 19	Santa Fe to Ft Garland	149 miles	3 hours
	Ft Garland to Colorado Springs	173 miles	3.25 hours
		322 miles	6.25 hours

RALLYE NOTES

Day 1 - Sunday, September 15

Arrive in Arvada / Golden

Welcome Reception & Registration 11:00 am-3:00 pm

Lamar Street Center

5889 Lamar Street, Arvada, CO

Check in at Golden Hotel

3:00 pm

800 11th St, Golden, CO

Cocktails / Dinner

6:30 pm

Sculptured House

(Shuttle leaves Golden Hotel at 6:00 pm)



It's party-time at the Sculptured House

RALLYE NOTES

Day 2 - Monday, September 16

First Day of Driving

Golden to Gunnison

Ladies and Gentlemen, Start Your Engines! Having kicked off this week with opportunities to enjoy good food, good drink, and great camaraderie (there will be plenty more of it to come), it is now time to initiate our prime directive.....to DRIVE! With the Golden Hotel serving as our starting line, our adventure begins with a trek down main street Golden, the Gateway to the West. Upon merging with I-70, the journey to higher elevation immediately begins and 150 miles of the most scenic stretch of Interstate in the country lay in wait. There are numerous wonders, some natural and some man-made, that help distinguish this expanse of black-top from others.

Along the way we will encounter the famed Sculptured House (man-made), also known as the Sleeper House due to its prominence in the cult classic Woody Allen film "Sleeper". Just up the road from there awaits a view (natural) that is among the very best around. Making our way through the mining towns of Idaho Springs, Georgetown, and Silver Plume, we soon find ourselves at the Eisenhower/Johnson Memorial Tunnels (man-made). At 11,158' (natural) it is the highest point on the Interstate Highway System. From there it's Dillon, Silverthorne and Frisco which is where the Dillon Reservoir (man-made with help from nature) is located. Under the control of Denver Water "Lake Dillon" serves as a source for Denver's water supply. Next up are Vail Pass and the Vail Valley (natural) as well as the World renowned ski resort town of Vail (man-made). The views through this area are generally spectacular this time of year with an array of colors that could make Crayola jealous. To close out this great stretch of Interstate we culminate with a passage through Glenwood Canyon (natural). No need for narration here as the canyon speaks for itself, although the engineering achievement that allows the roadway (man-made) to coincide with nature on this level is certainly to be marveled.



Peter and Rebecca at Black Canyon

We put I-70 behind us at Glenwood Springs where it's a short jaunt to our lunch date in Carbondale. The town of Carbondale is located at the foot of the tallest stand-alone peak in Colorado, 12,965' Mt. Sopris. It is from here that we enter the path less traveled. Redstone, a location that Peak to Peak has visited on several previous occasions, is a bit down the road, after which we make the climb up McClure Pass and continue on the type of road that our performance steeds were designed for. Can you say, Wahoooooooo? The route takes us along Paonia Reservoir and on to Somerset, a small coal mining community. You'll want to be very aware of your speed while in and around this area. We then make it to Paonia and then Hotchkiss, where we make the turn onto CO-92 toward the number one driving highlight of the day. We are about to enter the Black Canyon of the Gunnison north rim road. Once again, no words will capture the essence of this part of the journey. There are multiple turn-off areas that offer opportunities for sight-seeing that should be taken advantage of. Pioneer Point has especially tantalizing views into the depths of the Black Canyon, that is if you are the adventurous sort. Anybody afraid of heights? We finish the day off with a drive along Colorado's largest lake, Blue Mesa Reservoir, which ultimately directs us toward our destination in Gunnison.

"Date a car guy. We break parts, not hearts."

ROUTE INSTRUCTIONS

Day 2 - Monday, September 17

Golden to Gunnison

Your mileage may differ slightly. Please be prepared to follow instructions prior to mileage listed.

- Have luggage in Golden Hotel lobby by 8:00am
- Turn left onto 11th St leaving Golden Hotel garage / parking lot
- (< .1 m) Turn right onto Washington Ave
- (.6 m) Turn right onto 19th St
- (.3 m) At traffic circle, continue straight to stay on 19th St
- (.2 m) Take the ramp on the left onto 6th Ave
- (.2 m) Merge onto 6th Ave
- (1.7 m) Use the right lane to turn slightly right towards CO-470 E / Colorado Springs / I-70 W
- (.4 m) Continue onto CO-470 E
- (.2 m) Take the exit onto I-70 W toward Grand Junction
- (144 m) Take exit 116 for CO-82 E toward Glenwood Springs/Aspen
- (.1 m) Turn right onto CO-82 E
- **Fuel in Carbondale / next fuel in approx 60 miles**
- (11.7 m) Turn right onto CO-133 S / Carbondale
- (1 m) At traffic circle, take 3rd exit onto Main St
- (.6 m) Lunch at Village Smithy, 3rd & Main. Find parking in the surrounding area
- After lunch, return to Main St. heading east
- (.2 m) Turn right onto Snowmass Dr
- (.6 m) Turn left onto CO-133 S
- (64.9 m) Slight left onto 6th St in Hotchkiss
- **Fuel / Restroom south of Crawford / next fuel in approx 75 miles**
- (.2 m) Turn left onto CO-92 E
- (52.3 m) Turn left onto US-50 E
- (26.9 m) Arrive at Holiday Inn Express Gunnison, on left

Please wear your name tag!

Breakfast	6:30-8:30 am
Golden Hotel / Golden Vista Room	
Participant's Meeting	8:40 am
Golden Hotel Parking Garage	
Departure Time	9:00 am
Morning Drive	2.75 hours
	161 miles
Lunch	12:00 pm
Village Smithy (Carbondale)	
Afternoon Drive	3 hours
	145 miles
Shuttle departs from H.I. Express	6:15 pm
Reception / Dinner	6:30 pm
Ol' Miner Steakhouse (Gunnison)	
Lodging	
Holiday Inn Express (Gunnison)	

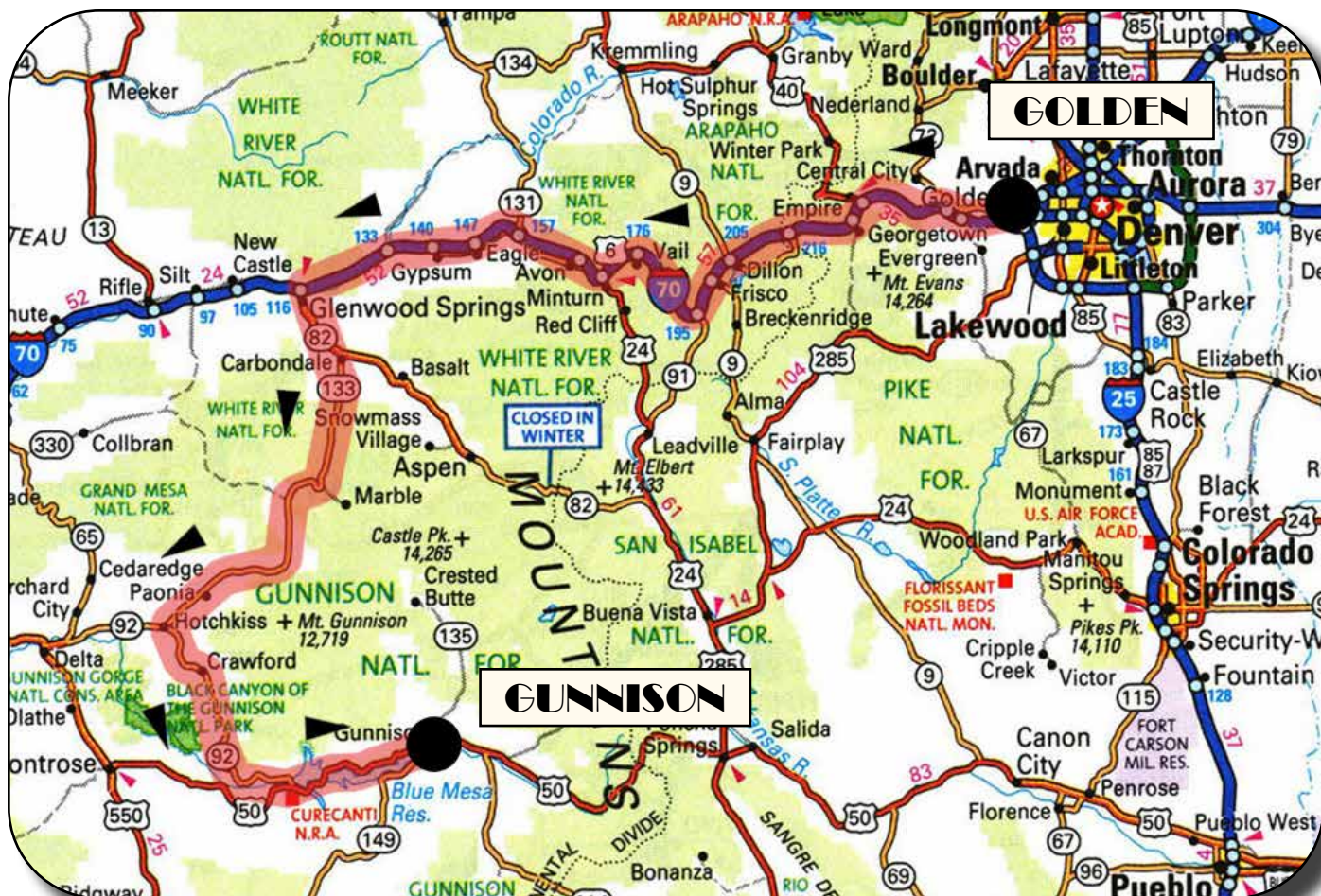
*"Giving money and power to government is like giving whiskey and car keys to teenage boys."
- P.J. O'Rourke*



A "butt"load of Porsche's?

ROUTE MAP

Day 2 - Monday, September 16



Rick brought Aaron out to play with us



Is it happy hour yet?

"I couldn't fix your breaks so I made your horn louder." - Tow Mater from the film Cars

CAR PHOTOS



2013 Ferrari California driven by Steve & Liz Lindsay



2004 Mercedes SL55 AMG driven by Kyle & Bev Turner



2018 Corvette ZR1 driven by Greg Mathews



2004 Corvette ZO6 driven by Bob Law & Joan Dohrmann



1969 Jaguar XKE Coupe driven by Duncan & Michael Burdick



2016 Porsche Cayman GTS driven by Don & Laurie Hicks



2011 SLS Mercedes AMG Gullwing driven by Doug Smith & Peter Hall



2019 Lotus Evora 400 driven by Peter Monson & Rebecca Lloyd

Day 3 - Tuesday, September 17

Second Day of Driving

Gunnison to Santa Fe

Today's journey is filled with some highly entertaining roads as well as fabulous scenery. The trip begins by heading back west toward Blue Mesa Reservoir. Upon reaching the reservoir we turn left onto CO-149 heading south. This is where our interaction with humanity experiences a significant drop over the next 100+ miles, which given the circumstances we have placed ourselves in this week, is a good thing. Within this roughly 119 mile stretch we find the towns of Lake City and Creede. Not a lot of folks may have heard of Lake City but most have indeed heard of Alferd Packer. It was in 1875 that Lake City gained notoriety when Mr Packer was charged with murder and (wait for it)...cannibalism. One account of the story has Packer acting as a guide for five prospectors when they became snowbound for the winter. Sounds like ol' Alferd may have invented the reality show "Survivor" long before it made the modern day air waves. Grisly tale for such a beautiful area but the occasion is actually celebrated with an annual Alferd Packer Jeep Tour and Barbeque. Mmm, mmm, good?

Awaiting us as we leave Lake City is the steepest continually paved road in Colorado (9 degree). This is encountered while we elevate toward the apex of Slumgullion Summit (11,530'). At 10,889', Spring Creek Pass is also in our path and then it's on to Creede and South Fork. Creede is immediately distinguishable by its unique geology. It was the last silver boom town in Colorado in the 19th century. The population exploded from 600 to over 10,000 between 1889 and 1891. It is considerably less today. History is good and all but let's talk about modern day Creede since it is currently home to the World's Largest Fork. At 40' long, the Creede Fork was named the weirdest tourist attraction in Colorado by The Daily Meal in 2018. We will understand if you feel you have reached sensory overload at this point but yes, there is more. Another 23 miles brings us to our junction with US-160 in the town of South Fork (insert "Fork" irony here). US-160 takes us on a

rise up and over the fabled Wolf Creek Pass. Made famous in 1975 by country music artist C.W. McCall, it was described as "37 miles o' hell" in regard to the challenges it presented to big rig truckers. For our purposes, it is nothing short of heaven on Earth and the south end of the descent brings God's handiwork into full display.

Today's lunch stop is in Pagosa Springs, a few miles south of Wolf Creek. Pagosa Springs is named for the sulfur springs located here, which include the world's deepest geothermal hot springs. A walk around the downtown area can present a distinct sulfur aroma. With the lunch break completed, we now make our way south toward the other U.S. state to be included in our travels, New Mexico. Chama is the next point of interest and the road that takes us there is very lightly traveled, i.e., FUN. Chama is the western most terminus of the Cumbres and Toltec Scenic Railroad, a steam-driven, narrow gauge heritage railway which carries visitors to and from Antonito, CO during the summer months. Peak to Peak has taken this particular route (CO/NM-17) previously and it is pretty cool to see the old steam locomotive chugging away out in the middle of nowhere. Not this year, but put it on your to-do list if you can. The road is a total blast to drive.

From Chama, US-84 south is the route that ushers our merry band of sports car enthusiasts the remaining 100 miles of today's drive. There isn't much happening during the 80 miles between Chama and Espanola, other than cool roads and distinctive scenery, but as we approach civilization again it'll be time to reel it in and chill the remaining way into our destination in Santa Fe. La Posada de Santa Fe will be our home for the next two nights.

*"NASCAR would be so much more entertaining if they throw banana peels and turtle shells."
- Unknown*

ROUTE INSTRUCTIONS

Day 3 - Tuesday, September 17

Gunnison to Santa Fe

Your mileage may differ slightly. Please be prepared to follow instructions prior to mileage listed.

- Have luggage in lobby by 8:00am
- Head west on US-50 / E Tomichi Ave
- (10 m) Turn left onto CO-149 S
- (95.5 m) Turn right onto E 7th St in Creede
- (<.1 m) Turn right at first cross street onto CO-149 S / La Garita St
- **Fuel / Restroom in South Fork / Next fuel in approx 60 miles**
- (21.2 m) Turn right onto US-160 W
- (41.6 m) Turn right onto E Pagosa St, Pagosa Springs
- (<.1 m) Lunch stop at Pagosa Brewing Co., on left
- After lunch, head east on E Pagosa St toward US-160 E
- Turn left onto US-160 E
- (5.2 m) Turn right onto US-84 E towards Chama, NM
- **Fuel / Restroom in Chama**
- (126 m) Slight right onto Pso Santa Clara, in Espanola
- (.2 m) Turn left onto Santa Clara Bridge Rd
- (.8 m) Continue onto US-84 E / S Riverside Dr / US-285 S
- (22.9 m) Use left lane to take the exit toward Museum
- (.3 m) Continue onto N Guadalupe St
- (.4 m) Turn left onto Paseo De Peralta
- (.7 m) Continue straight to stay on Paseo De Peralta
- (.1 m) Turn right onto Otero St
- (.2 m) Turn left onto E Palace Ave
- (.2 m) Arrive at La Posada de Santa Fe, on right

Please wear your name tag!

Breakfast	6:30-8:00 am
Holiday Inn Express	
Participant's Meeting	8:15 am
H.I. Express Parking Lot	
Departure	8:30 am
Morning Drive	3.5 hours
	168 miles
Lunch	12:00 pm
Pagosa Brewing & Grill (Pagosa Springs)	
Afternoon Drive	2.75 hours
	152 miles
Reception / Dinner	6:30 pm
La Posada (Santa Fe)	
Lodging	
La Posada de Santa Fe (Santa Fe)	



Team Mathews taking an ice cream break in Moab

CAR PHOTOS



2018 Porsche Turbo S driven by David & Myrna Bennett



2010 Ferrari 458 Italia driven by Doug & Ruth Freyta



2017 Porsche Turbo S driven by Harry & Cris Mathews



2013 Porsche Carrera S driven by Bill & Kay Kilpatrick



Ferrari 488 Spider driven by Dan & Paula Alefs



2018 Ferrari 488 GTB driven by Larry & Toni Winkler



1989 Porsche Speedster driven by Jim Edwards & Bill Muir



1972 Ferrari GTC/4 driven by Rick Kaufman

Day 4 - Wednesday, September 18

Third Day of Driving

Santa Fe Loop (or chill day in Santa Fe)

As we will be spending two days in Santa Fe, that will give participants the option between taking the day drive or staying in Santa Fe. La Posada is located in close proximity to the areas arts district and shopping, which might be alluring to some. As we have had a couple of longer drives over the previous two days we have chosen a much more palatable route for today's outing. At roughly 160 miles it is by far the shortest distance that will be covered this week, but it will be taken through some highly interesting territory, entertaining as well.

With the shortened length that will be covered today we won't be in a hurry to hit the road. Beginning with a stretch of well traveled highway we'll have a chance to ease our way into today's drive. Once reaching NM-502 you'll soon enter the "Safety Corridor" where traffic fines are doubled. From what I experienced while on my scouting expedition to the area, the locals don't seem to pay much attention to the ridiculously low posted speeds. But if you do by chance get pulled over, don't say you weren't warned.

The town of White Rock is where the traffic thins dramatically and the entertainment commences. It is not long before we encounter the site of the Las Conchas fire. Started on June 26, 2011, it was the largest wildfire in New Mexico's history at the time. The site is rather eerie as we pass through stretches of road where toppled trees still lay where they fell, many times hanging over the roads protective guardrails. The fire ultimately consumed 156,293 acres of forest. This area is located just south of the Los Alamos National Laboratory, which is where the development and creation of the atomic bomb took place. Fortunately, the fire burned just one acre of the site before being extinguished by firefighters.



Los Conchas fire giving Los Alamos a real scare

The next point of interest we'll encounter is the Valles Caldera, a 13.7 mile wide inactive volcanic caldera. It's a good thing it's inactive as the eruption that created it apparently made Mount St. Helens rate a .1 on the Richter scale in comparison. From here we make our way to our lunch stop and turn around point in Jemez Springs. Los Ojos is bound to provide an interesting experience. The building is over 100 years old and the sweet lady that owns the place is an ex-Olympian Marathoner and at one point finished 2nd in the extremely popular Bolder Boulder marathon.

After lunch, it's rinse and repeat. In other words, we're going to do it again. Driving the same road in different directions always offers up a unique perspective. Just outside of Jemez Springs we encounter the Soda Dam Falls, a unique natural dam created by calcium deposits from several natural springs in the area.

We arrive back in Santa Fe with plenty of time to take a stroll around the surrounding area or simply rest up before tonight's off-site dinner. No shuttle will be needed since Eloisa is just a block away.

*"I couldn't find the sports car of my dreams,
so I built it myself." - Ferdinand Porsche*

ROUTE INSTRUCTIONS

Day 4 - Wednesday, September 18

Santa Fe Loop

Your mileage may differ slightly. Please be prepared to follow instructions prior to mileage listed.

- Leaving La Posada parking lot, turn left onto E Palace Ave
- (<.1 m) Turn right onto Paseo De Peralta
- (.1 m) Turn right onto N Guadalupe St
- (.4 m) Use left 2 lanes to take the ramp onto US-84 W / US-285
- (14.9 m) Use right 2 lanes to take the NM-502 W / Los Alamos exit
- (.2 m) Merge onto Los Alamos Hwy
- (1.7 m) Continue onto NM-502
- (9.9 m) Use right 2 lanes to take the NM-4 ramp to Bandelier Nat. Mon. / White Rock
- (.5 m) Continue onto NM-4 W
- (28.4 m) Turn right. Tour Valles Caldera to whatever degree you wish. Entrance Station is in 1.8 m.
- Return to NM-4 W. Turn left
- (10.4 m) Turn left onto NM-501 E
- (4.6 m) Use any lane to turn left to stay on NM-501 E
- (.5 m) Slight right onto Trinity Dr
- (1.4 m) Turn left onto Knecht St
- (<.1 m) Turn right
- (.2 m) Turn right into parking lot
- Lunch stop at Pajarito Brewpub & Grill, on left
- After lunch, return to Trinity Dr, turn right
- (1.4 m) Use left 2 lanes to turn left onto NM-501 W / Diamond Dr
- (.6 m) Use right 2 lanes to turn sharply right to stay on NM-501 W
- (4.6 m) Turn left onto NM-4 E

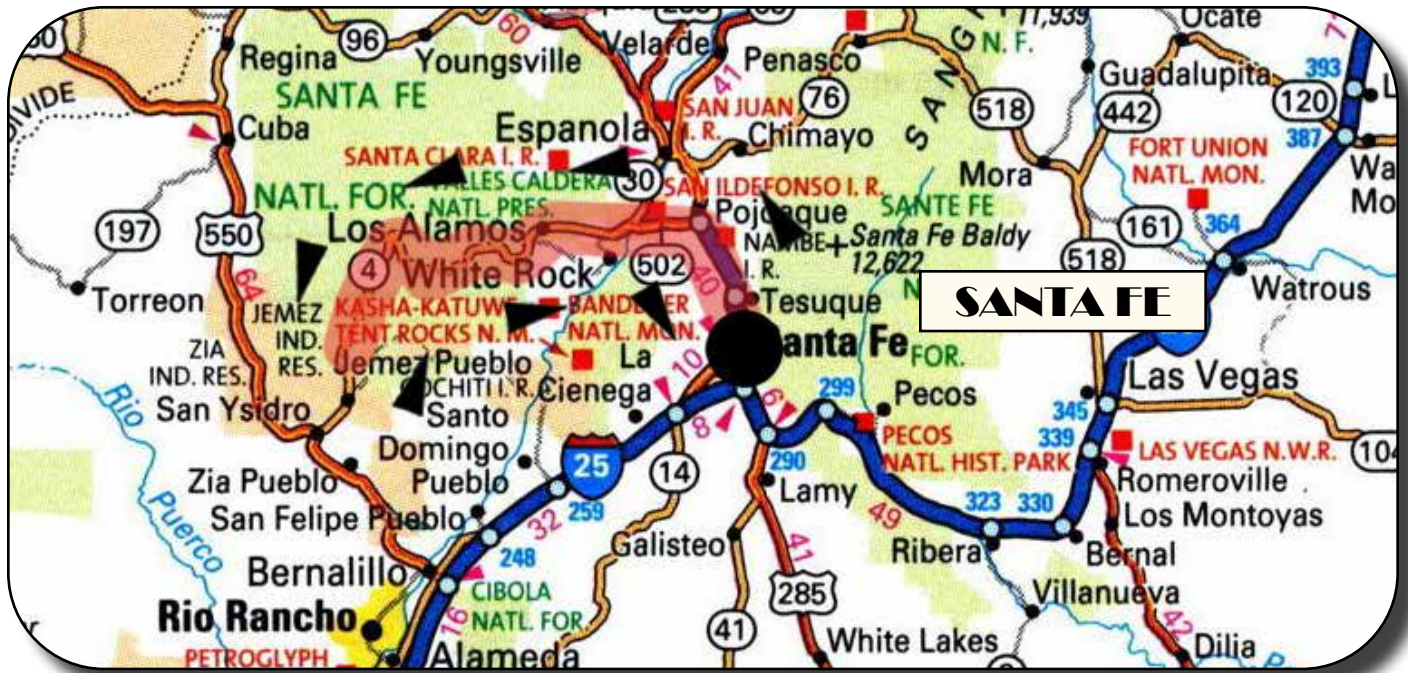
Please wear your name tag!

Breakfast	6:30-8:30 am
Eloisa at Drury Plaza Hotel	
Participant's Meeting	9:00 am
La Posada Parking Lot	
Departure	9:15 am
Morning Drive	2 hours
	78 miles
Lunch	11:30 am
Pajarito Brewpub & Grill (Los Alamos)	
Afternoon Drive	1.25 hours
	53 miles
Reception / Dinner	6:30 pm
Eloisa at Drury Plaza Hotel (Santa Fe)	
Lodging	
La Posada de Santa Fe (Santa Fe)	

- (17.9 m) Keep right at the fork, follow signs for NM-502 E / Santa Fe and merge onto NM-502
- (12 m) Use right lane to take US-285 S / US-84 S ramp to Santa Fe
- (.3 m) Merge onto US-285 S / US-84
- (14.6 m) Use left lane to take exit toward Museum
- (.3 m) Continue onto N Guadalupe St
- (.4 m) Turn left onto Paseo De Peralta
- (.7 m) Continue straight to stay on Paseo De Peralta
- (.1 m) Turn right onto Otero St
- (.2 m) Turn left onto E Palace Ave
- (.2 m) Arrive at La Posada de Santa Fe, on right

ROUTE MAP

Day 4 - Wednesday, September 19



"A dream without ambition is like a car without gas....you're not going anywhere." - Sean Hampton



Our resident class clowns



Nice to have a little class in the joint

CAR PHOTOS



2019 Porsche GT2RS driven by Scott & Gretchen Long



1996 Corvette Grand Sport driven by Mark Burgard



2018 Mercedes Benz GTC driven by David & Eva Schoonmaker



2016 Porsche Turbo S driven by Richard & Diane Mazer



2018 Porsche GT2RS driven by David & Sue Jenkins



2016 Porsche GT3RS driven by Fred & Linda Veitch



2009 Corvette Convertible driven by Wayne & Andrew Golomb



2019 McLaren 600LT driven by Arnold & Maureen Undzis

RALLYE NOTES

Day 5 - Thursday, September 19

Fourth Day of Driving

Santa Fe to Colorado Springs

The final day on the road is already here. This will be the longest day of the week, but that is why we took it easy on you yesterday. Since we do have a lot of miles to cover our departure time is earlier than usual.

Heading north from Santa Fe we'll once again be encountering traffic until Espanola so it'll be wise to just take it easy. But don't worry, there will be open road to come. Historic Taos is ahead and then another 24 miles before we hit the town of Questa. At that point the road before us becomes straight for as far as the eye can see. The temptation will be strong here but just remember the consequences if you get caught exercising your vehicle too vigorously. It won't be long before you can see Blanca Peak rising up in the horizon, 55 miles ahead of us back in Colorado. Shortly after entering Colorado we arrive in Colorado's oldest continually occupied town, San Luis. It's another straight shot to Ft. Garland which sits at the foot of Blanca Peak. At 14,351' it is the fourth highest summit of the Rocky Mountains of North America, with the three highest (Harvard, Massive and Elbert) being located roughly 100 miles north of here. Even closer are the tallest sand dunes in the U.S., Great Sand Dunes National Park, which is just north of Blanca Peak. Who says everything is bigger in Texas? It is in Ft Garland that we stop for lunch today.

Leaving Ft Garland we find ourselves on a really great stretch of US-160. It's a cool road that has its temptations. But beware; more than one Peak to

Peaker has been forced to make an unscheduled pit stop along this stretch. During this run we'll encounter La Veta Pass. It is on the east side of La Veta that the Spanish Peaks come in to view. The Ute Indians named these peaks, Huajatolla, which means "Breasts of the Earth". Seems appropriate.

A drive along the north side of these mammary mountains leads us to the town of Walsenburg. It is here that we merge with I-25 and take it north to

Colorado City, approximately 25 miles. CO-165 is an entertaining stretch of blacktop that brings us to the doorstep of one of the most interesting attractions in the state. Well, "interesting" is one word you could use to describe it. Bishop Castle is an "elaborate and intricate one-man project", named for its constructor, Jim Bishop. The structure was built piece by piece by Mr. Bishop, with the main tower rising over 160 feet. It's definitely worth a look see.



Bishop Castle

Okay, now we're in the home stretch. Up the way a bit is the town of Florence, home of the infamous Supermax Penitentiary. Also known as the "Alcatraz of the Rockies" it serves as home to the likes of such villains as Ted Kaczynski, a.k.a. the Unibomber and Dzhokhar Tsarnaev who was responsible, along with his brother, for planting the bombs that reeked such havoc at the Boston Marathon in 2013. CO-115

takes us into Colorado Springs. Along the way we pass by Cheyenne Mountain and Ft Carson, two very significant facilities in U.S. Military history. Now it's on to the Colorado Springs Marriott where the driving portion of Peak to Peak officially comes to its conclusion. Thanks for tagging along!

ROUTE INSTRUCTIONS

Day 5 - Thursday, September 19

Santa Fe to Colorado Springs

Your mileage may differ slightly. Please be prepared to follow instructions prior to mileage listed.

- Leaving La Posada parking lot, turn left onto E Palace Ave
- (<.1 m) Turn right onto Paseo De Peralta
- (.1 m) Turn right onto N Guadalupe St
- (.4 m) Use left 2 lanes to take the ramp onto US-84 W / US Hwy 285 N
- (23.1 m) Continue straight onto NM-68 N / S Riverside Dr, in Espanola
- (45.5 m) Continue onto US-64 W / Paseo Del Pueblo Norte, in Taos
- (4.1 m) Continue straight onto NM-522 N
- (41.1 m) NM 522 becomes CO-159 N
- (33.7 m) Turn right onto US-160 E, in Ft Garland
- (.1 m) Turn right into Dels Diner for lunch
- **Fuel / Restroom in Ft Garland / Next fuel approx 50 miles**
- (46.9 m) Turn left onto Main St, Walsenburg
- (.1 m) Turn right at 2nd cross street onto US-160 E / E 5th St
- (.1 m) Turn right onto I-25 N ramp towards Pueblo
- (.2 m) Merge onto I-25 N
- (24.3 m) Take exit 74 for CO-165 W toward Colorado City
- **Fuel / Restroom in Colorado City**
- (.2 m) Turn left onto CO-165 W
- (36.7 m) Turn right onto CO-96 E
- (9.6 m) Turn left onto CO-67 N
- (11.1 m) Turn right onto CO-115 N / E Main St, in Florence
- (36.6 m) Keep left to continue on CO-115 N / S Nevada Ave
- (1.5 m) Use left 2 lanes to turn left
- (.1 m) Use right 2 lanes to take I-25 N ramp
- (.3 m) Merge onto I-25 N
- (6.6 m) Use right 2 lanes to take exit 148 for Rockrimmon Blvd

Please wear your name tag!

Breakfast	6:30-8:00 am
Eloisa at Drury Plaza Hotel	
Participant's Meeting	8:15 am
La Posada Parking Lot	
Departure	8:30 am
Morning Drive	3 hours
	149 miles
Lunch	11:30 am
Dels Diner (Ft Garland)	
Afternoon Drive	3.25 hours
	173 miles
Shuttle departs from Marriott	6:00 pm
Reception / Dinner	6:30 pm
Porsche Colorado Springs	
Lodging	
Colorado Springs Marriott	

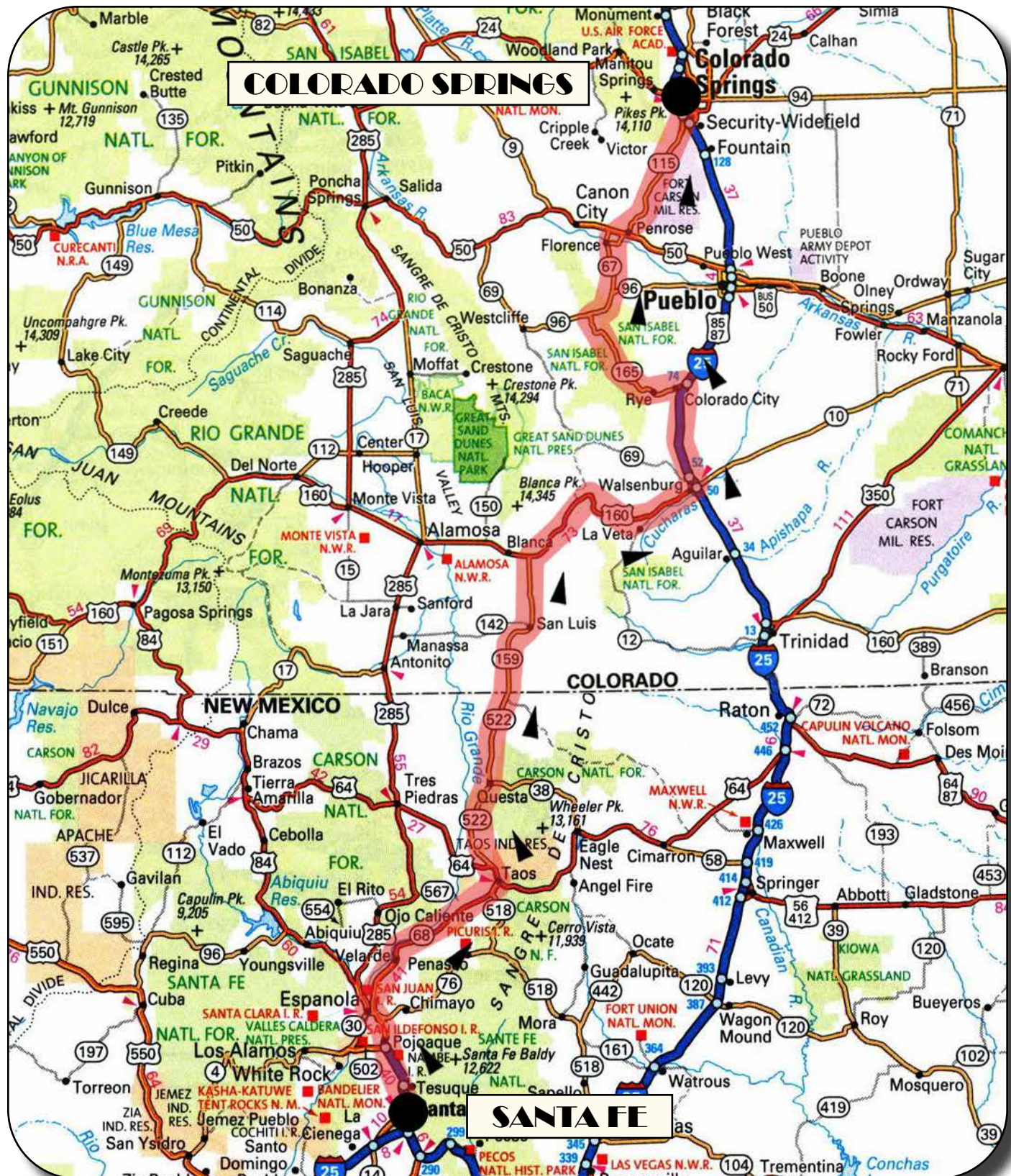
- (.5 m) Use left 2 lanes to turn left onto S Rockrimmon Blvd
- (.4 m) Turn left onto Tech Center Dr
- (<.1 m) Turn right
- (.2 m) Arrive at Marriott



Cheers to the Scottsdale Crew

ROUTE MAP

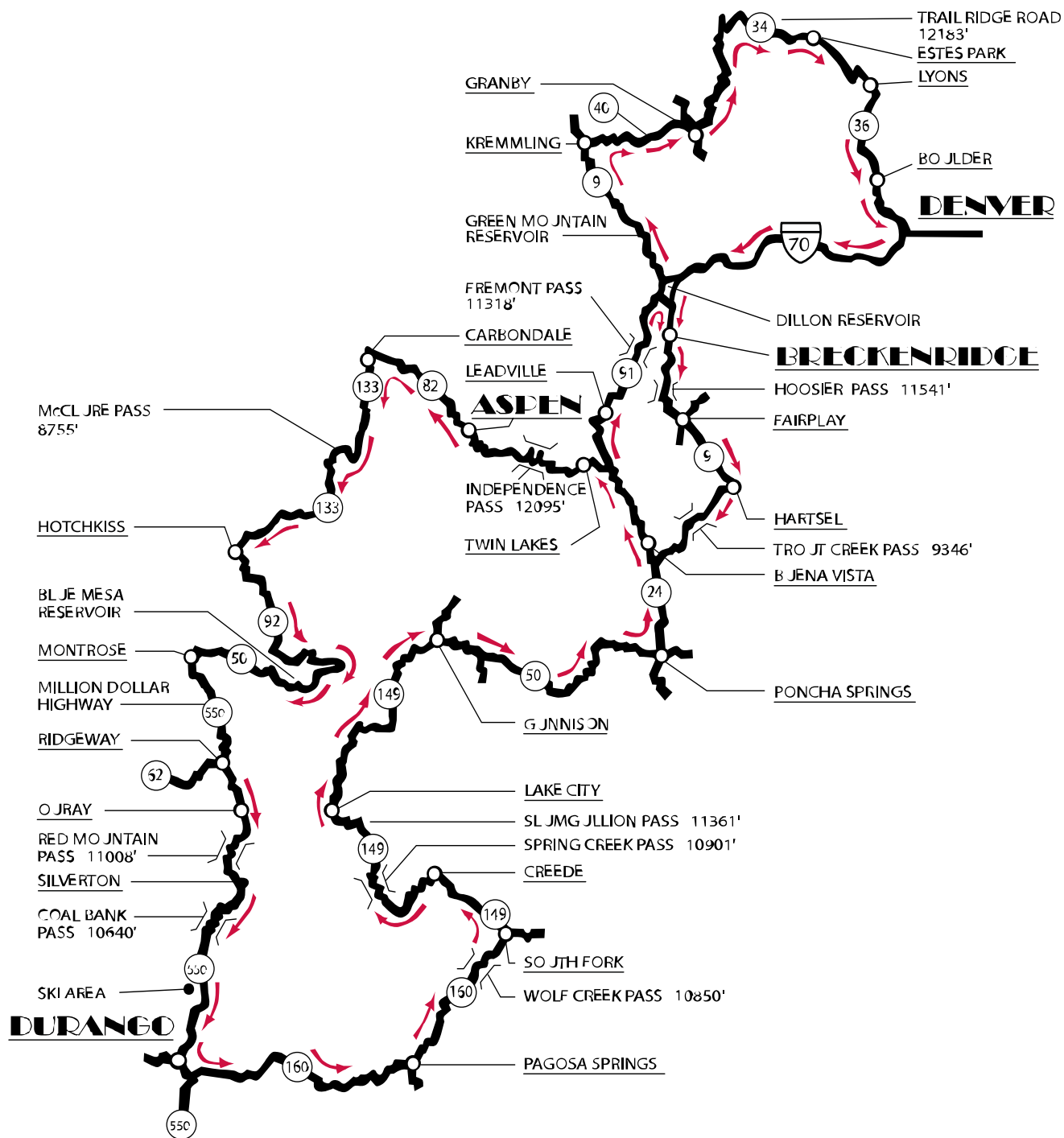
Day 5 - Thursday, September 19





SEPTEMBER 19-24, 2004

2004 RALLYE



Denver West Marriott
1717 Denver West Blvd, Golden, CO
303-279-9100

Hotel Jerome
330 East Main Street, Aspen, CO
970-920-1000

Durango Double Tree
501 Camino Del Rio, Durango, CO
970-259-6580

Mountain Thunder Lodge
50 Mountain Thunder Dr, Breckenridge, CO
970-547-5650



SEPTEMBER 18-23, 2005

2005 RALLYE



Golden

Aspen

Manitou Springs

Pagosa Springs

Denver West Marriott

1717 Denver West Blvd, Golden, CO
303-279-9100

The Cliff House

306 Canon Ave, Manitou Springs, CO
719-785-2408

Pagosa Lodge

3505 West Hwy 160, Pagosa Springs, CO
800-523-7704

Hotel Jerome

330 East Main Street, Aspen, CO
970-920-1000

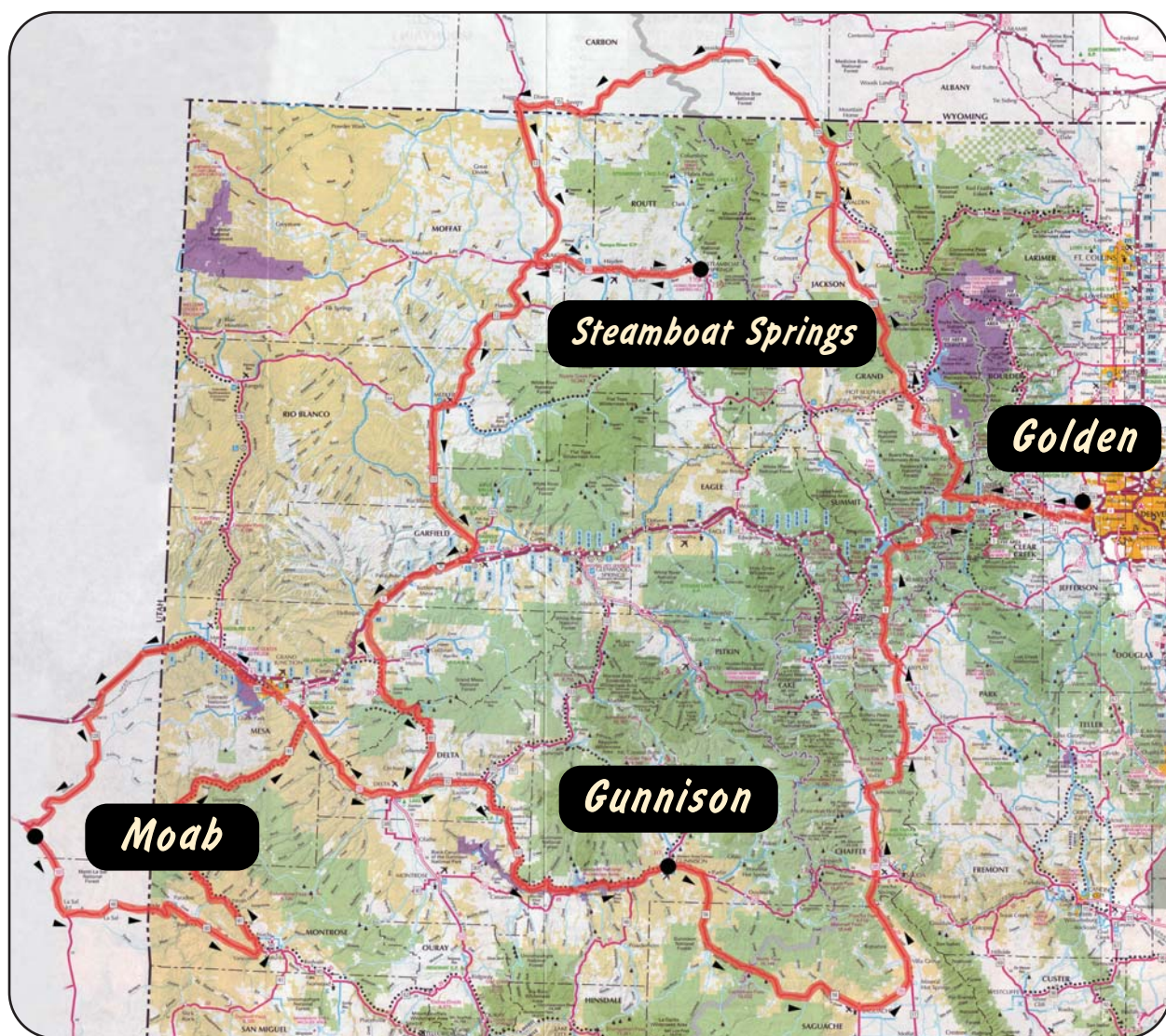
"I can drive myself crazy, I don't need your help." - Unknown



SEPTEMBER 17-22, 2006

W. W. W.

2006 RALLYE



Golden Hotel

800 11th Street, Golden, CO
303-279-0100

Steamboat Grand Hotel

2300 Mt Werner Circle, Steamboat Springs, CO
970-871-5500

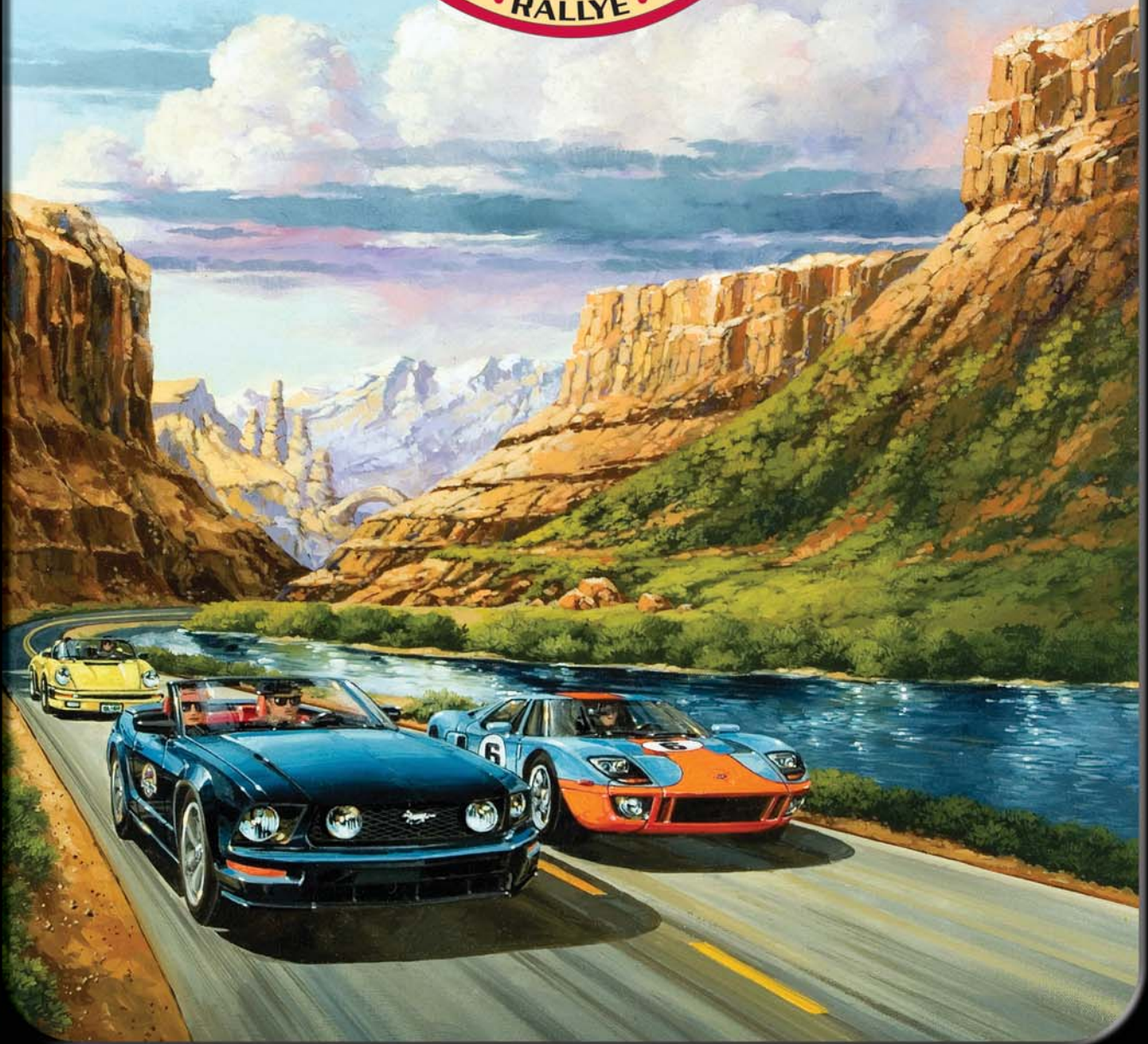
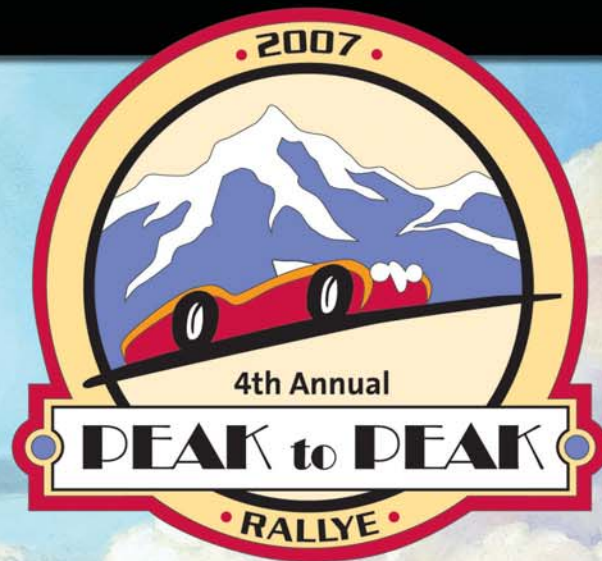
Red Cliffs Lodge

Mile Post 14, Hwy 128, Moab, UT
435-259-2002

Holiday Inn Express

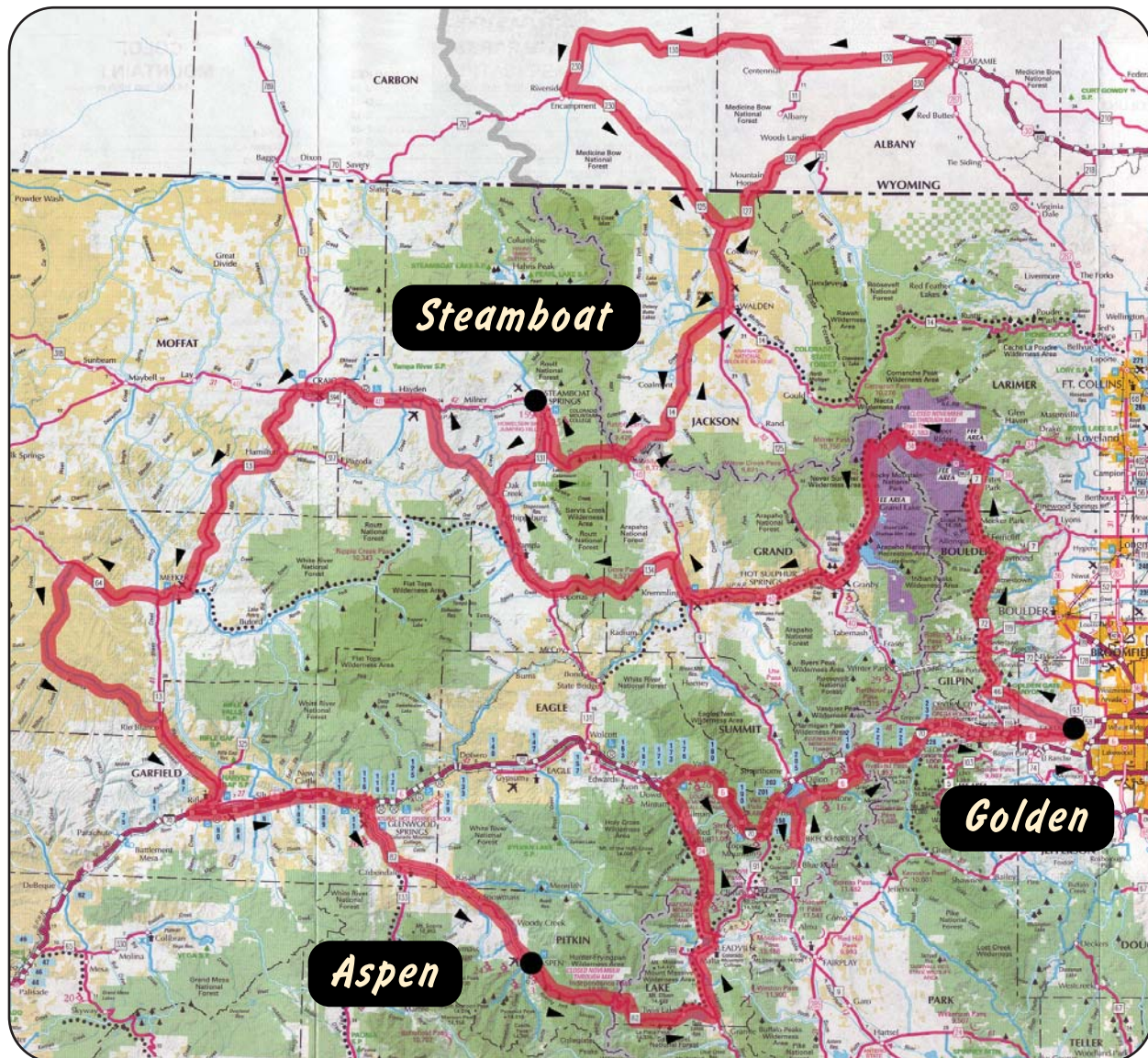
910 E Tomichi Ave, Gunnison, CO
970-641-1288

"Walking isn't a lost art. One must, by some means, get to the garage." - Evan Esar



September 16-21, 2007

2007 RALLYE



Golden Hotel

800 11th Street, Golden, CO
303-279-0100

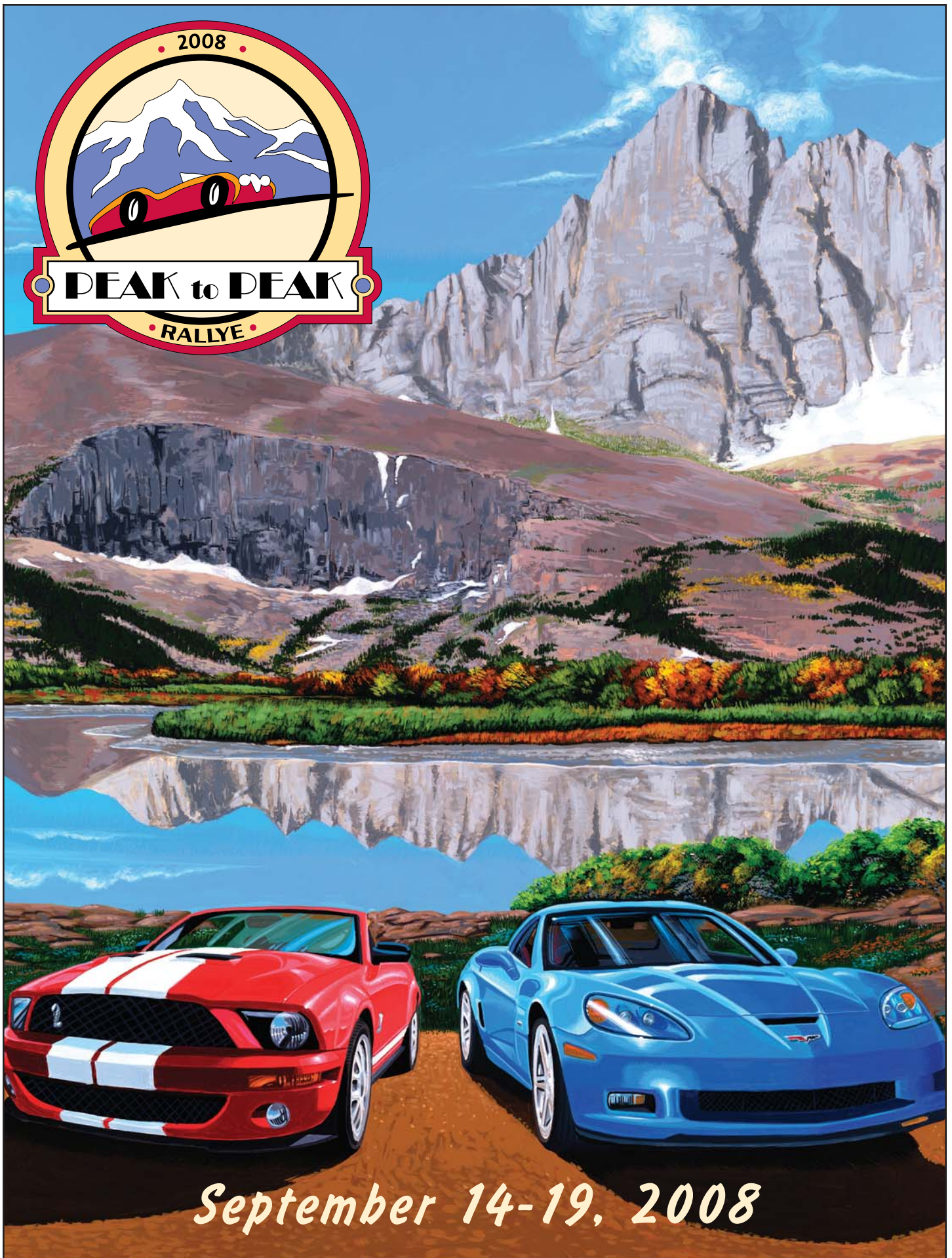
Steamboat Grand Hotel

2300 Mt Werner Circle, Steamboat Springs, CO
970-871-5500

St. Regis

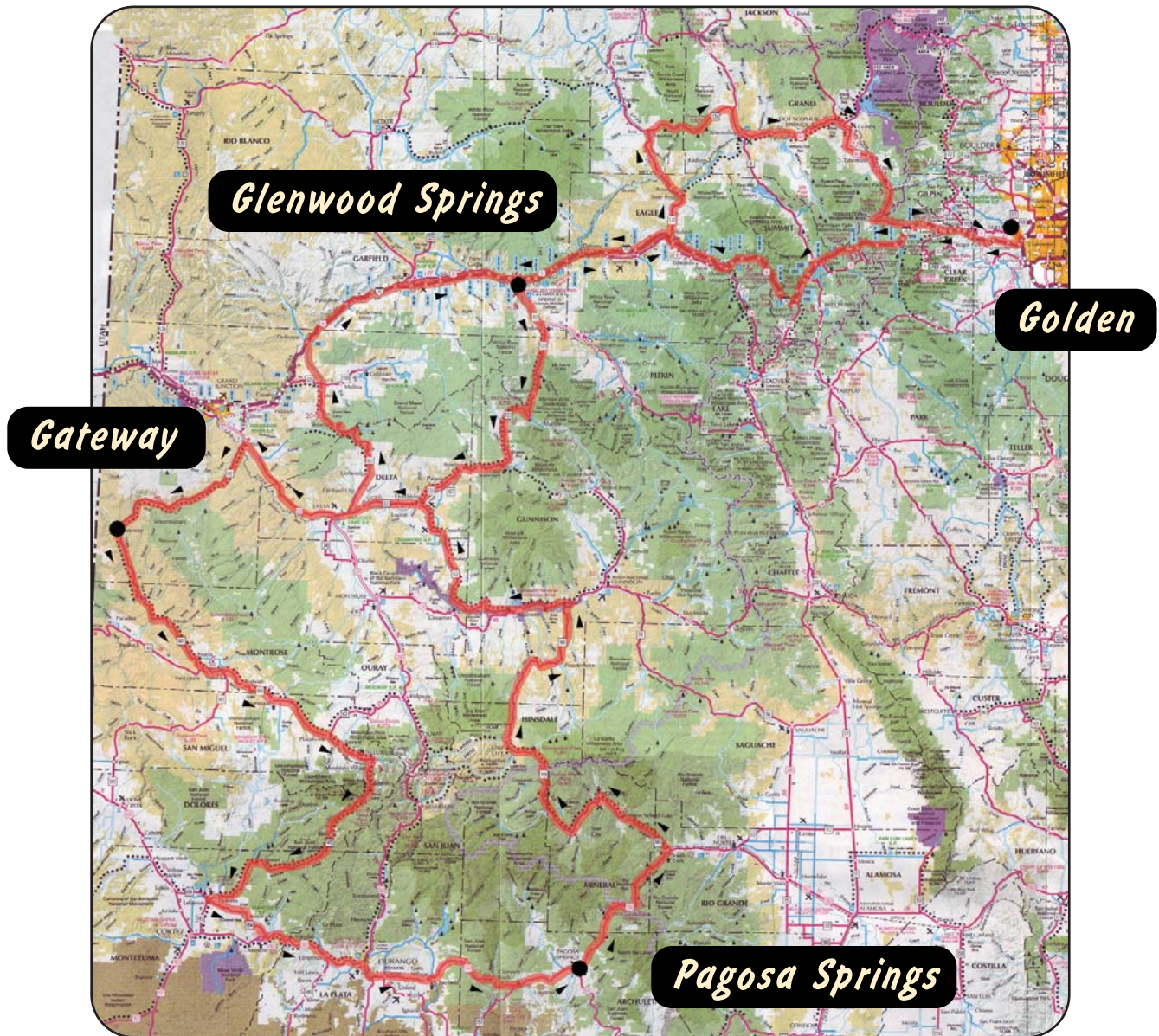
315 East Dean Street, Aspen, CO
970-920-3300

*"How much more can they take from me? They got my blood,
now it's my car!" - Taken from the film, Mad Max: Fury Road*



September 14-19, 2008

2008 RALLYE

**Golden Hotel**

800 11th Street, Golden, CO
303-279-0100

Gateway Canyons

43200 Hwy 141, Gateway, CO
970-931-2458

The Springs Resort

165 Hot Springs Road, Pagosa Springs, CO
970-264-4169

Hotel Colorado

526 Pine Street, Glenwood Springs, CO
970-945-6511

"If you had to choose between unlimited gas or perfect love, what would be the first place you'd drive too?" - Unknown

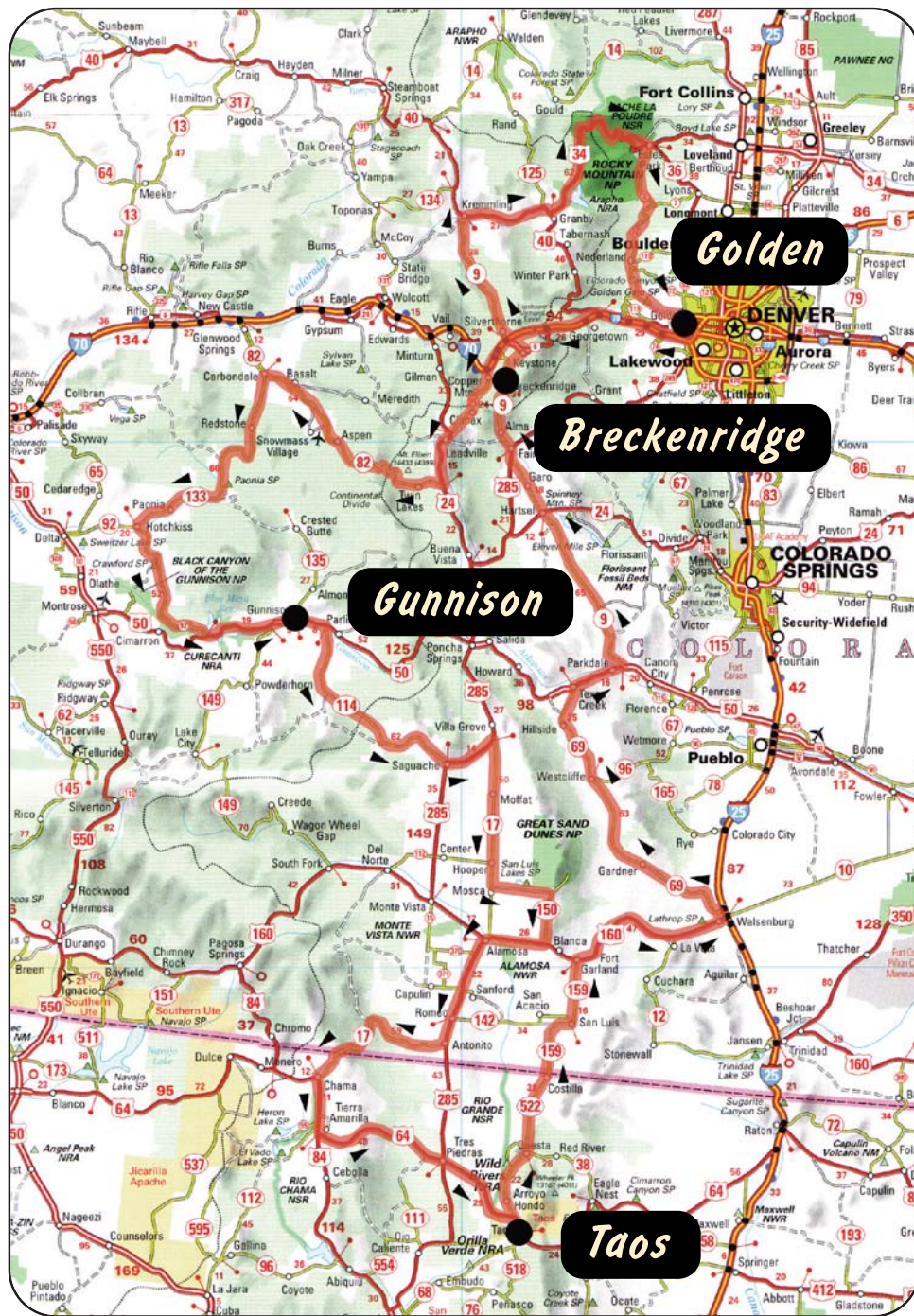


Commemorative Edition

September 20-25, 2009



2009 RALLYE



Golden Hotel
800 11th Street, Golden, CO
303-279-0100

Holiday Inn Express
910 East Tomichi Ave, Gunnison, CO
970-641-1288

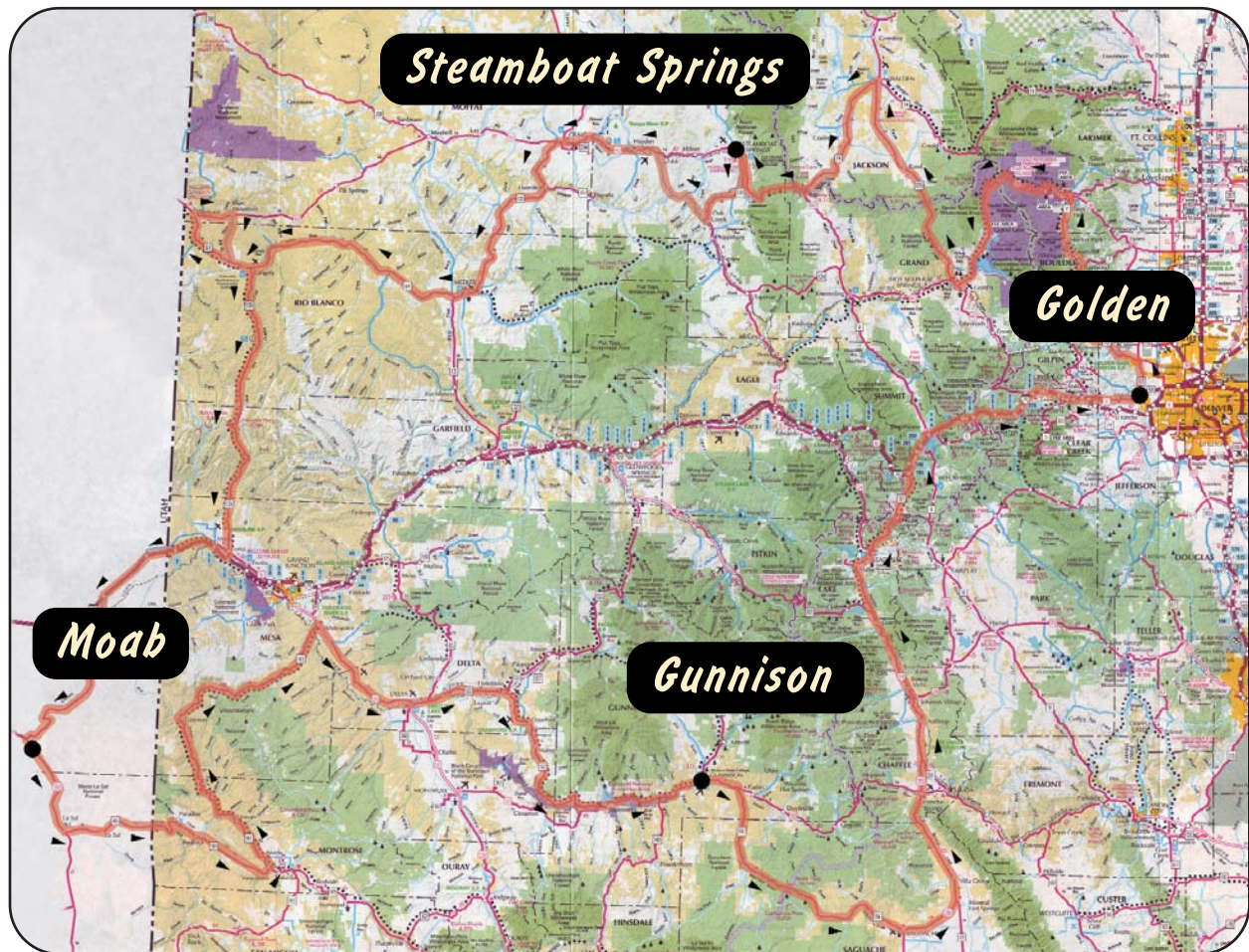
El Monte Sagrado
317 Kit Carson Road, Taos, NM
575-737-9883

Mountain Thunder Lodge
50 Mountain Thunder Dr, Breckenridge, CO
970-547-5650



September 12-16, 2010

2010 RALLYE

**Golden Hotel**

800 11th Street, Golden, CO
303-279-0100

Steamboat Grand Hotel

2300 Mt Werner Circle, Steamboat Springs, CO
970-871-5500

Red Cliffs Lodge

Mile Post 14, Hwy 128, Moab, UT
435-259-2002

Holiday Inn Express

910 East Tomichi Ave, Gunnison, CO
970-641-1288

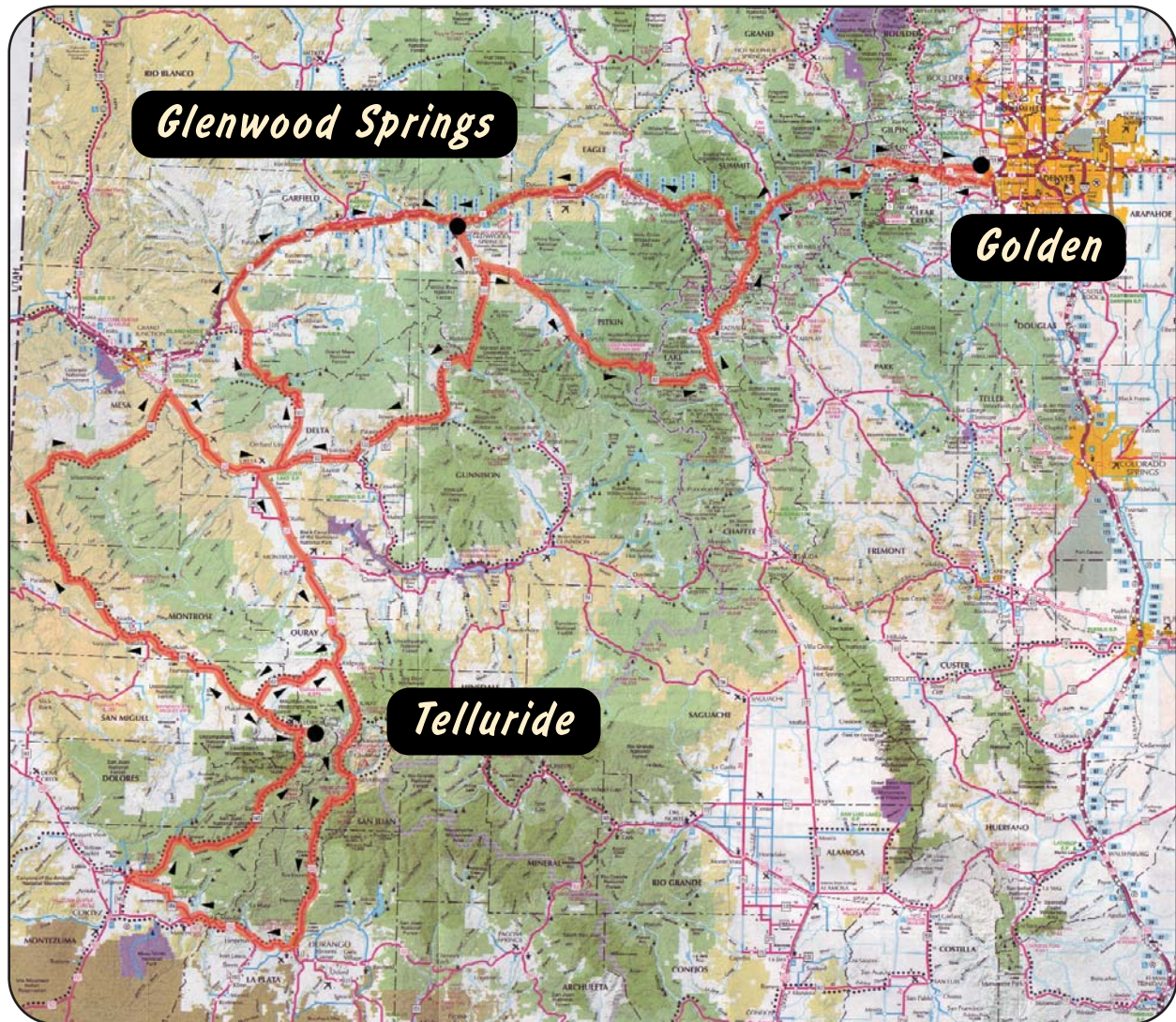
"The biggest thrill a ballplayer can have is when your son takes after you. That happened when my Bobby was in his championship Little League game. He really showed me something. Struck out three times and made an error that lost the game. Parents were throwing things at our car and swearing at us as we drove off. Gosh, I was proud." - Bob Uecker



September 11-16, 2011



2011 RALLYE

**Golden Hotel**

800 11th Street, Golden, CO
303-279-0100

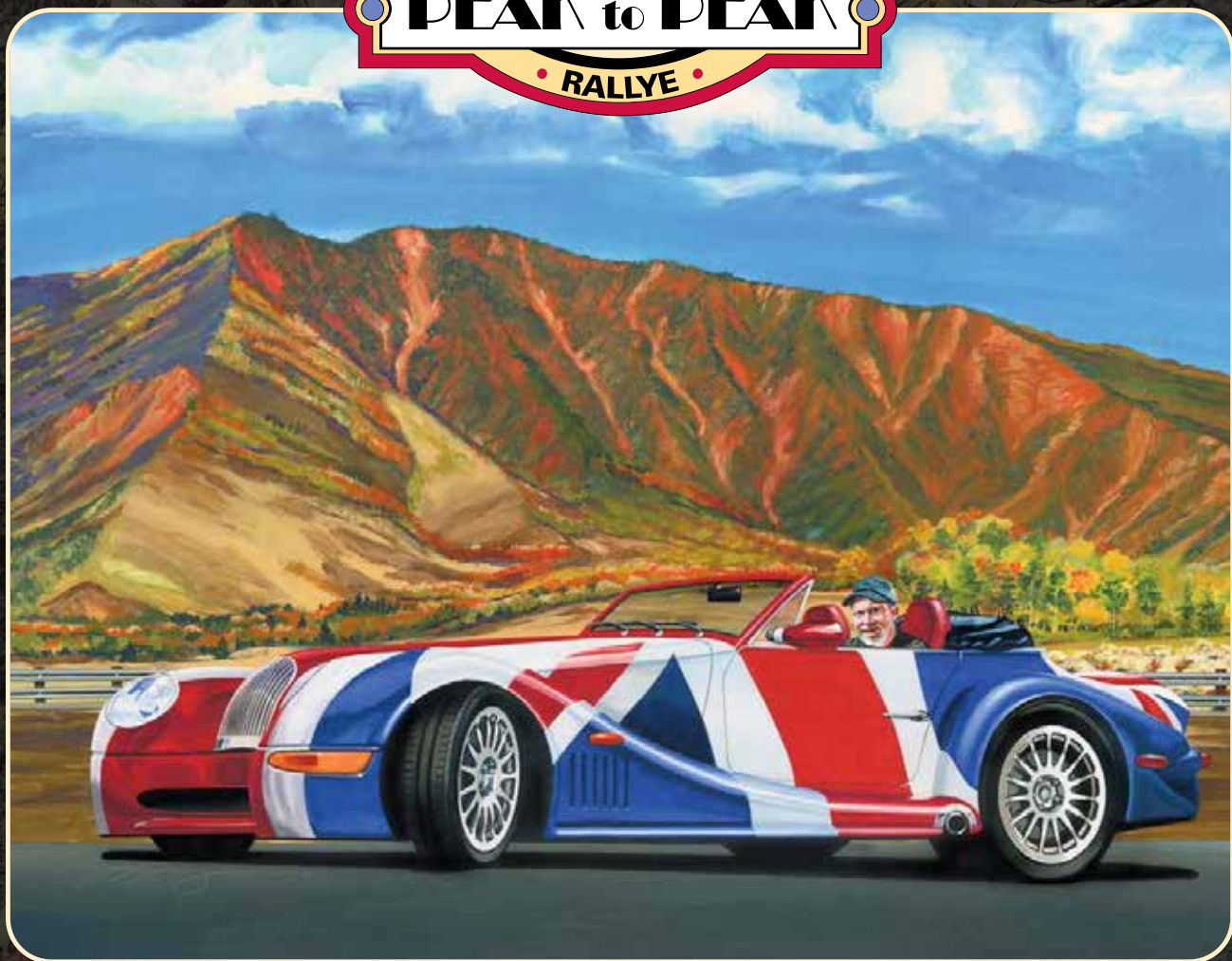
Marriott Courtyard

105 Wolfsohn Rd, Glenwood Springs, CO
970-947-1300

Hotel Madeline

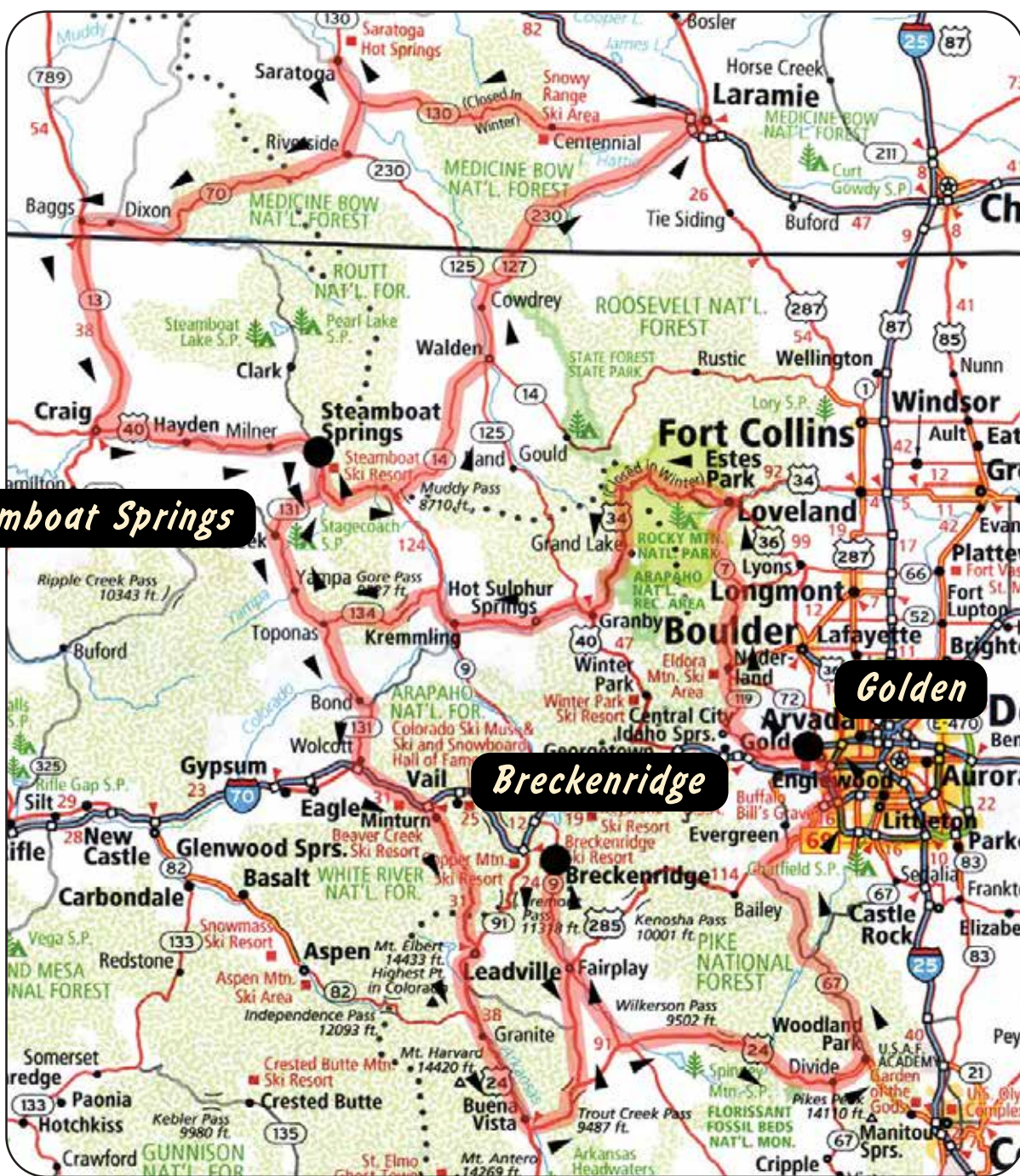
568 Mountain Village Blvd, Telluride, CO
970-369-0880

"The fact is I don't drive just to get from A to B. I enjoy feeling the cars reactions, becoming part of it." - Enzo Ferrari



September 14-18, 2014

2014 RALLYE



Golden Hotel
800 11th Street, Golden, CO
303-279-0100

Steamboat Grand Hotel
2300 Mt Werner Circle, Steamboat Springs, CO
970-871-5500

Mountain Thunder Lodge
50 Mountain Thunder Dr, Breckenridge, CO
970-547-5650



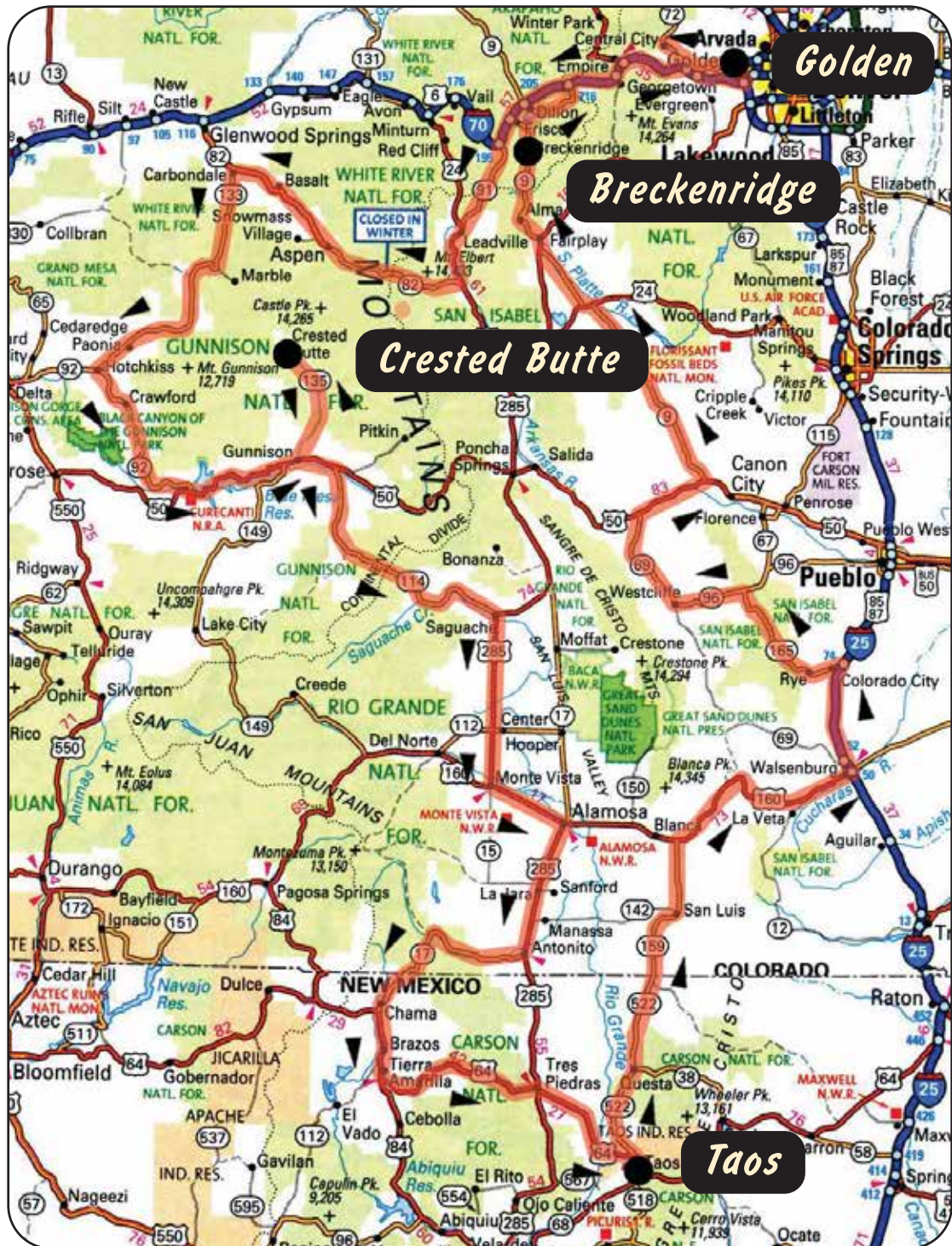
2015

PEAK TO PEAK RALLYE

Celebrating our 10th Adventure
September 13-17, 2015



2015 RALLYE



Golden Hotel

800 11th Street, Golden, CO
303-279-0100

Grand Lodge

6 Emmons Road, Mt. Crested Butte, CO
970-349-8000

El Monte Sagrado

317 Kit Carson Road, Taos, NM
575-737-9883

Mountain Thunder Lodge

50 Mountain Thunder Dr, Breckenridge, CO
970-547-5650

2016 EVENT PROGRAM

September 18-23, 2016



PEAK TO PEAK

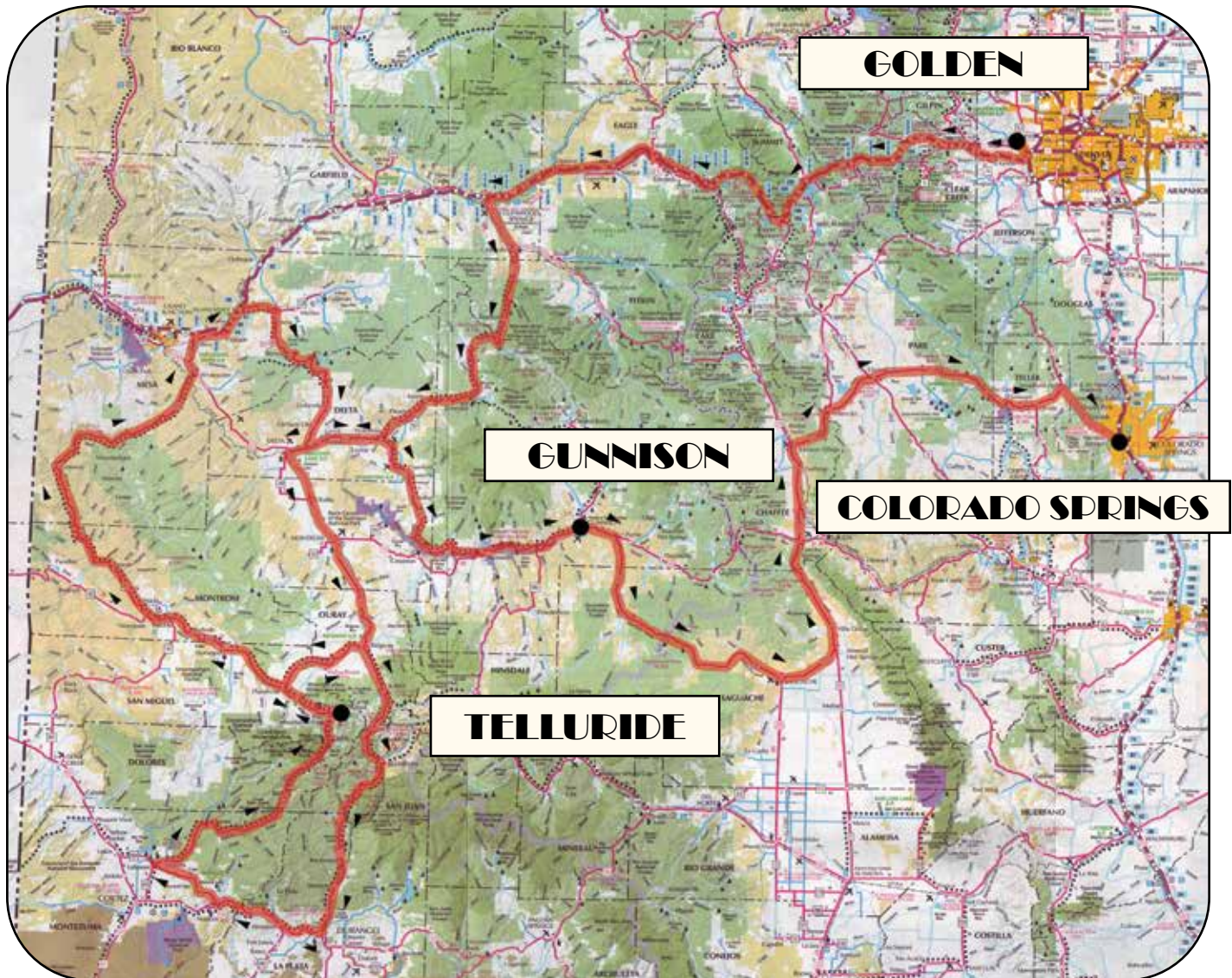
RALLYE



Presented by **Porsche of Colorado Springs**



2016 RALLYE

**Golden Hotel**

800 11th Street, Golden, CO
303-279-0100

Hotel Madeline

568 Mountain Village Blvd, Telluride, CO
970-369-0880

Holiday Inn Express

910 Tomichi Avenue, Gunnison, CO
970-641-1288

Cheyenne Mountain Resort

3225 Broadway Valley Road, Colorado Springs, CO
719-538-4000

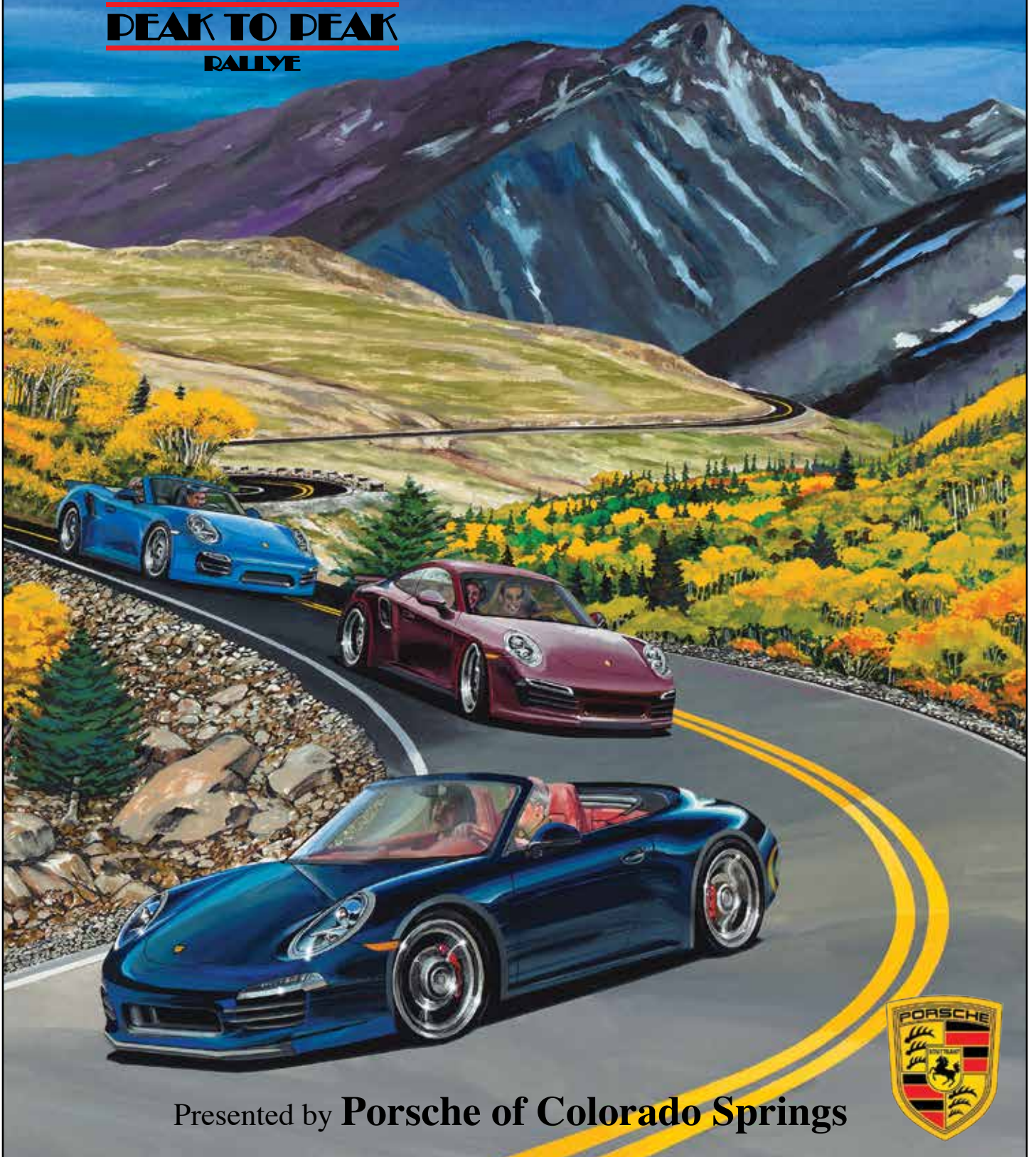
"Float like a Cadillac, Sting like a Beemer." - Taken from the Film, Cars

2017 EVENT PROGRAM

SEPTEMBER 17-21



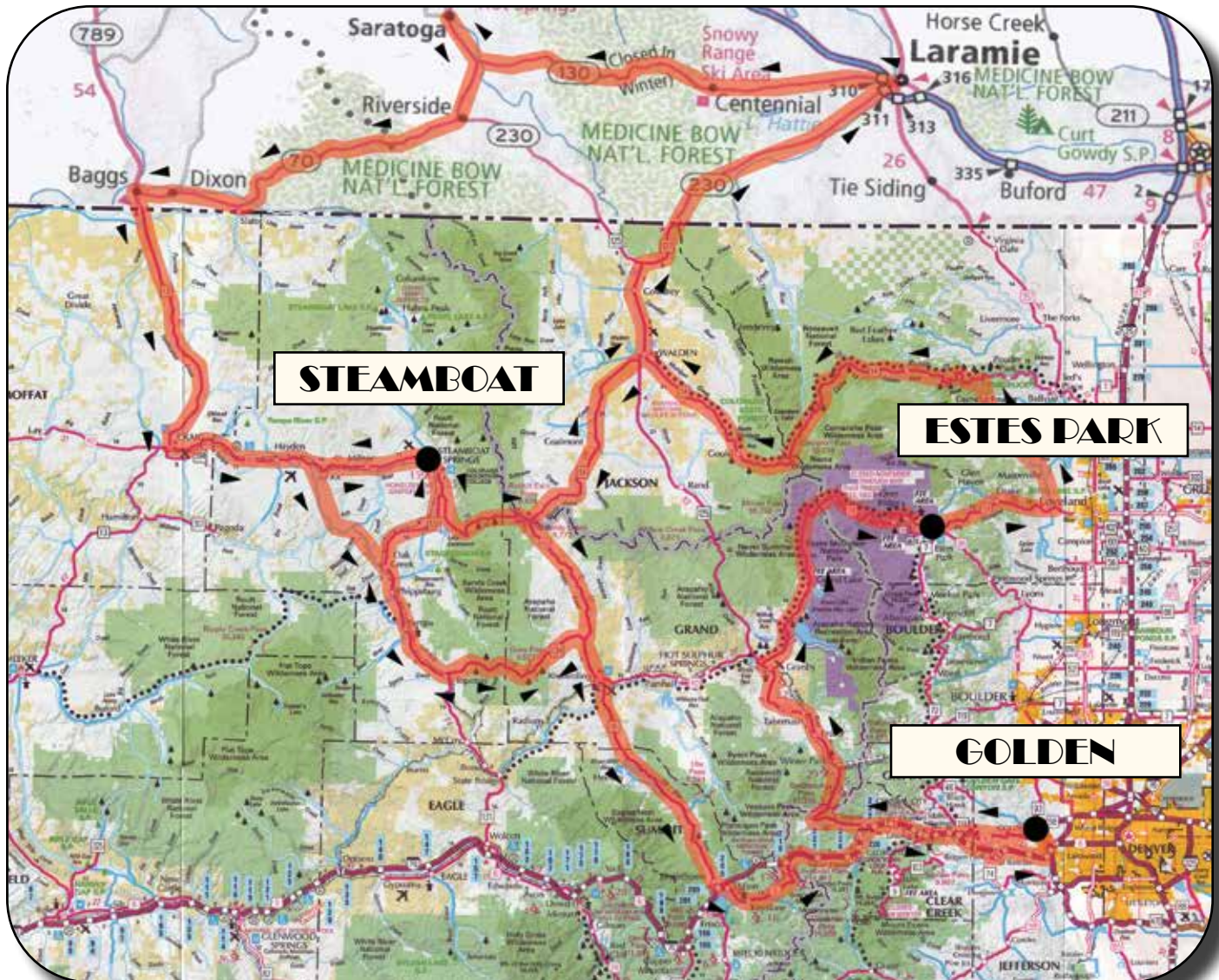
PEAK TO PEAK
RALLYE



Presented by **Porsche of Colorado Springs**



2017 RALLYE



Golden Hotel
800 11th Street, Golden, CO
303-279-0100

Stanley Hotel
333 E Wonder View Ave, Estes Park, CO
970-586-3371

Steamboat Grand Hotel
2300 Mt Werner Circle, Steamboat Springs, CO
970-871-5500

"Yes, I rock out in my car. Yes, I know you can see me. No, I don't care!" - Greg Mathews

2018 EVENT PROGRAM

SEPTEMBER 15-20



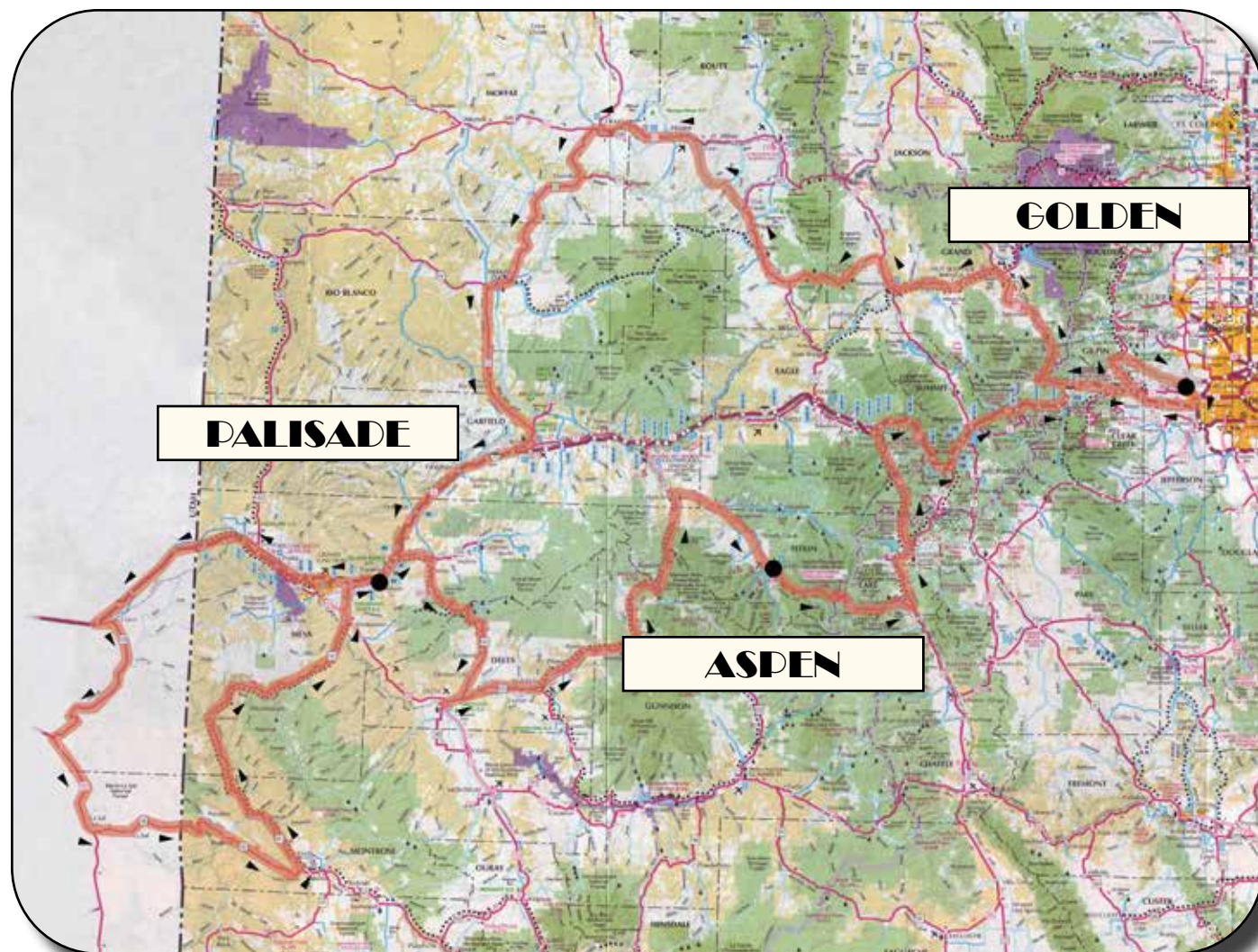
PEAK TO PEAK
RALLYE



Presented by **Porsche Colorado Springs**



2018 RALLYE

**Golden Hotel**

800 11th Street, Golden, CO
303-279-0100

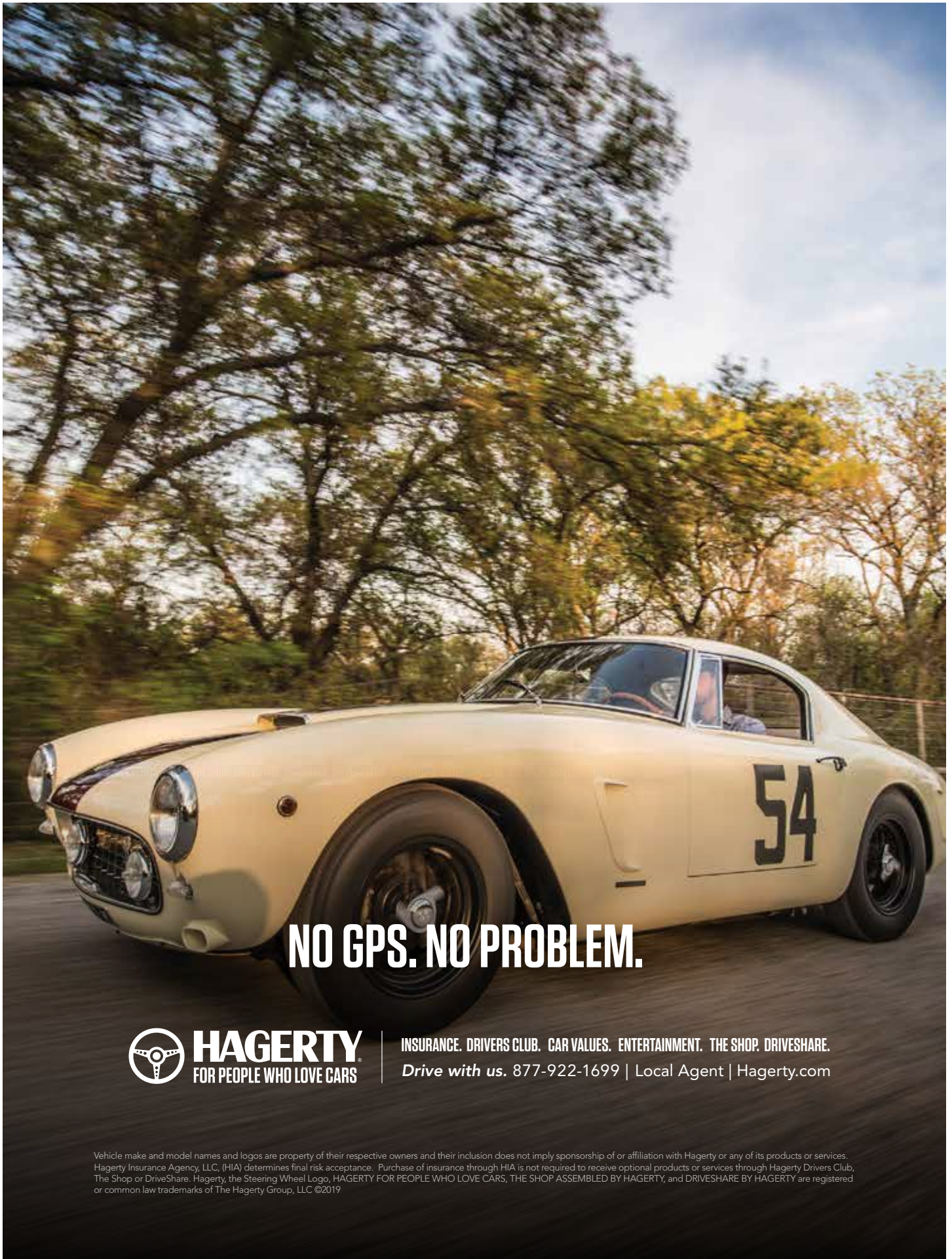
St Regis Hotel

315 E Dean St, Aspen, CO
970-920-3300

Wine Country Inn

777 Grande River Dr, Palisade, CO
970-464-5777

"My car broke down outside of Pizza Hut last night. So I ordered a pizza to be delivered to my house and got a lift from the driver." - Nikhil Saluja



NO GPS. NO PROBLEM.



HAGERTY
FOR PEOPLE WHO LOVE CARS

INSURANCE. DRIVERS CLUB. CAR VALUES. ENTERTAINMENT. THE SHOP. DRIVESHARE.
Drive with us. 877-922-1699 | Local Agent | Hagerty.com

Vehicle make and model names and logos are property of their respective owners and their inclusion does not imply sponsorship of or affiliation with Hagerty or any of its products or services. Hagerty Insurance Agency, LLC, (HIA) determines final risk acceptance. Purchase of insurance through HIA is not required to receive optional products or services through Hagerty Drivers Club, The Shop or DriveShare. Hagerty, the Steering Wheel Logo, HAGERTY FOR PEOPLE WHO LOVE CARS, THE SHOP ASSEMBLED BY HAGERTY, and DRIVESHARE BY HAGERTY are registered or common law trademarks of The Hagerty Group, LLC ©2019